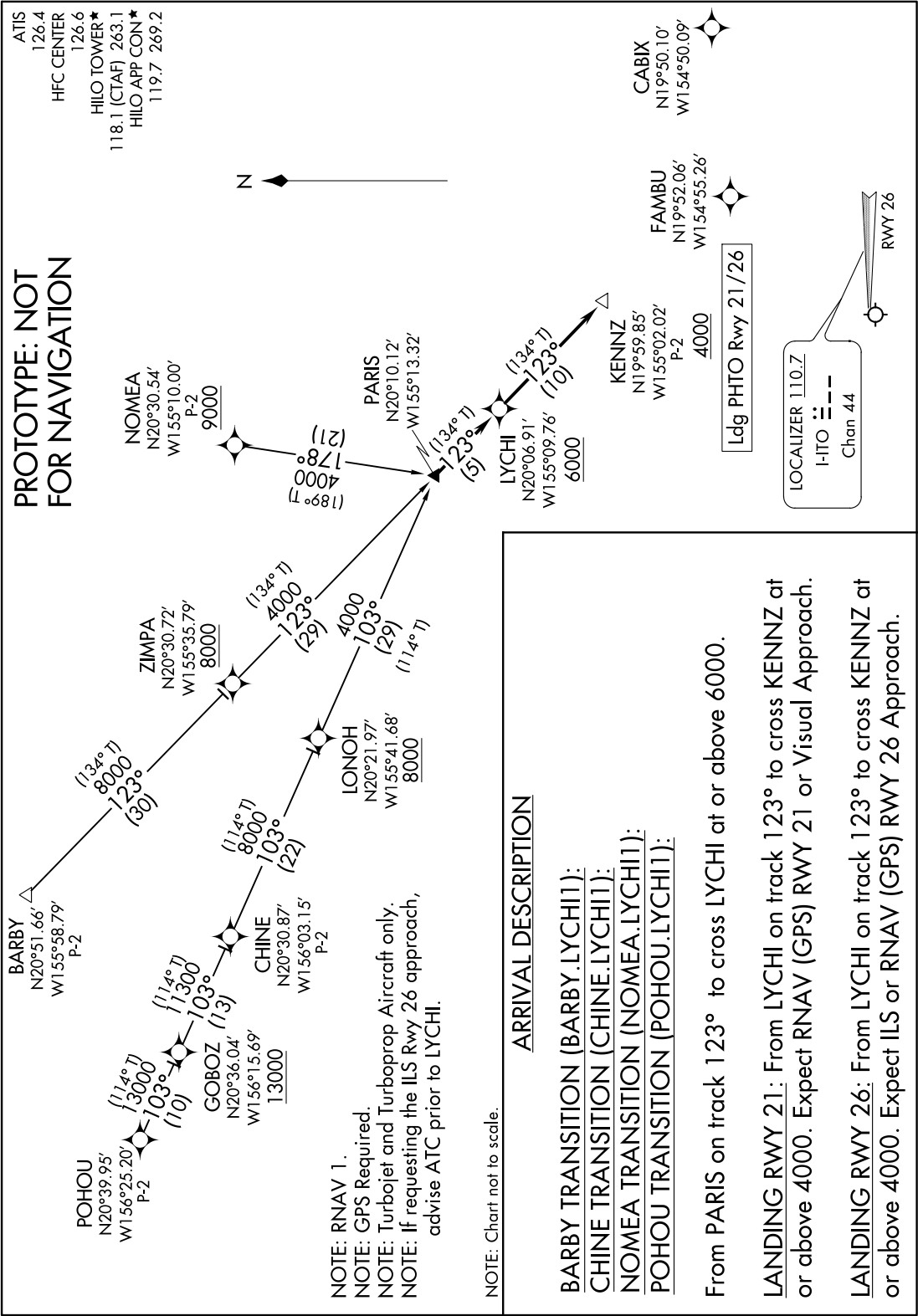


Flight Procedures Cover Page	Task Action: FLIGHT CHECK	Task Type: STAR	Estimated Chart Date: 07/16/2020	APWS Task ID: 09204DBC57F84974854BC83169B67FB9	APWS Request ID: A10BB84CCDA84A7FA639EA66DF8861BA
Procedure: STAR LYCHI (RNAV) ONE HILO HI PHTO		Enroute: YES	Specialist: Zeder, Joseph		Agreement Number:
Airport ID: PHTO	Airport Name: HILO INTL		Airport City: HILO		State: HI
Facility ID:	Facility Type:	Flight Inspection Remark Type: New FC Slot			
<div>Procedure Comments: POC: JACOB POWERS 405-954-8702</div> <div>J ZEDER 12/15/2020</div> <div>QUALITY 16 CHECKED</div> <div>12/15/2020: THIS IS A CORRECTED COPY OF THE FORM APPROVED ON 11/24/2020. 1. ADDED LOW/HIGH TO COMPULSORY REPORTING POINT.</div>					

(PARIS.LYCHI1) FIG  
LYCHI ONE ARRIVAL (RNAV)

AL-756 (FAA)

HILO INTL (ITO)(PHTO)  
HILO, HAWAII



LYCHI ONE ARRIVAL (RNAV)  
(PARIS.LYCHI1) FIG

HILO, HAWAII  
HILO INTL (ITO)(PHTO)

AUTOMATED AL-756 LYCHI ARRIVAL

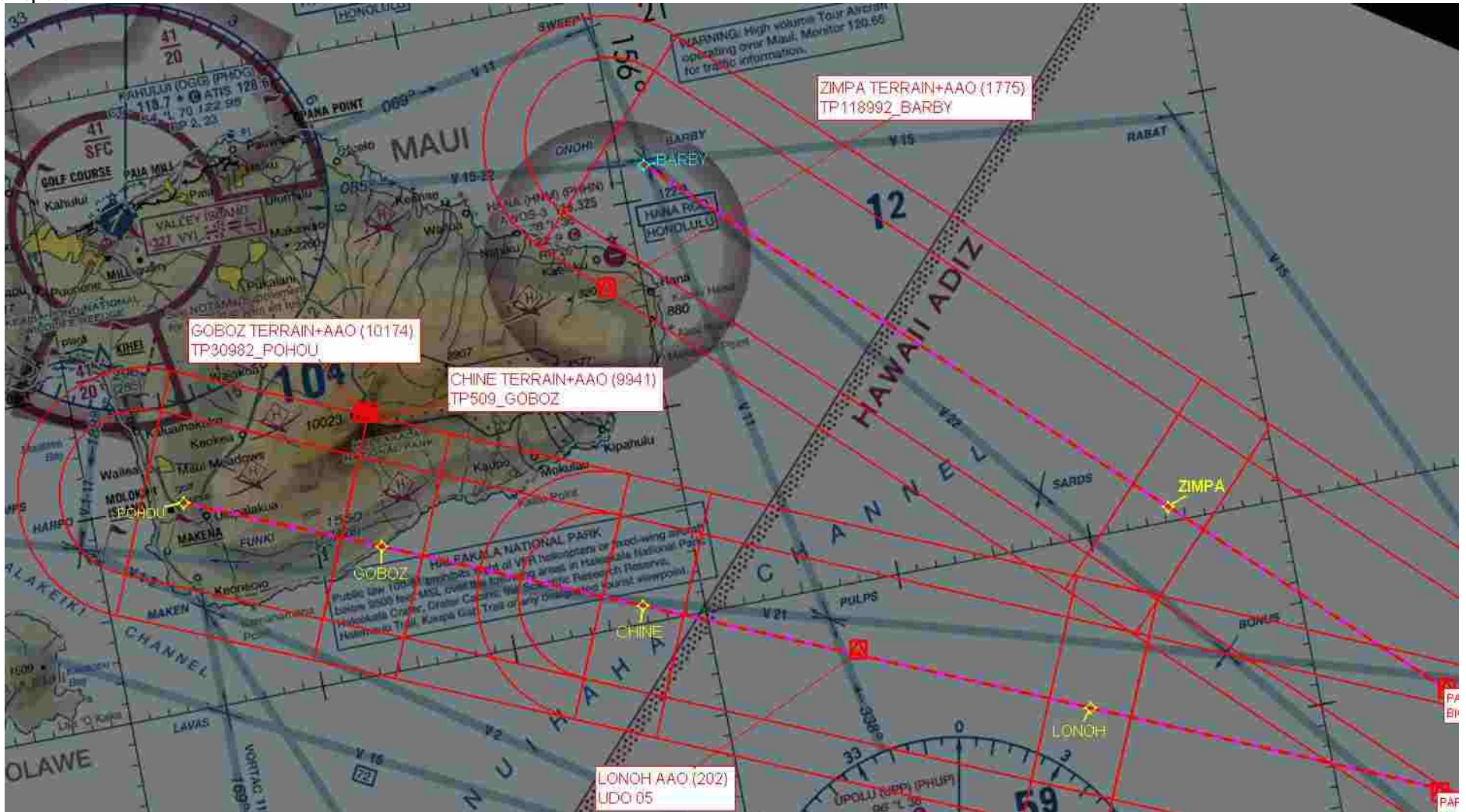
PAC  
14 FEB 2020  
COMPILER: CG  
REVIEWER:  
DBL CHKR:  
EFF DATE: FIG

FEDERAL AVIATION ADMINISTRATION  
FLIGHT STANDARDS SERVICE  
STANDARD TERMINAL ARRIVAL (STAR)

Bearings, headings, courses, tracks and radials are magnetic. Elevations and altitudes are in feet, MSL. Altitudes are minimum altitudes unless otherwise indicated. Distances are in nautical miles (NM). Graphic depictions attached.

Arrival Name	Number	STAR Computer Code	Superseded Number	Dated	Effective Date
LYCHI RNAV	ONE	PARIS.LYCHI1	NONE		

Graphic Depiction 2

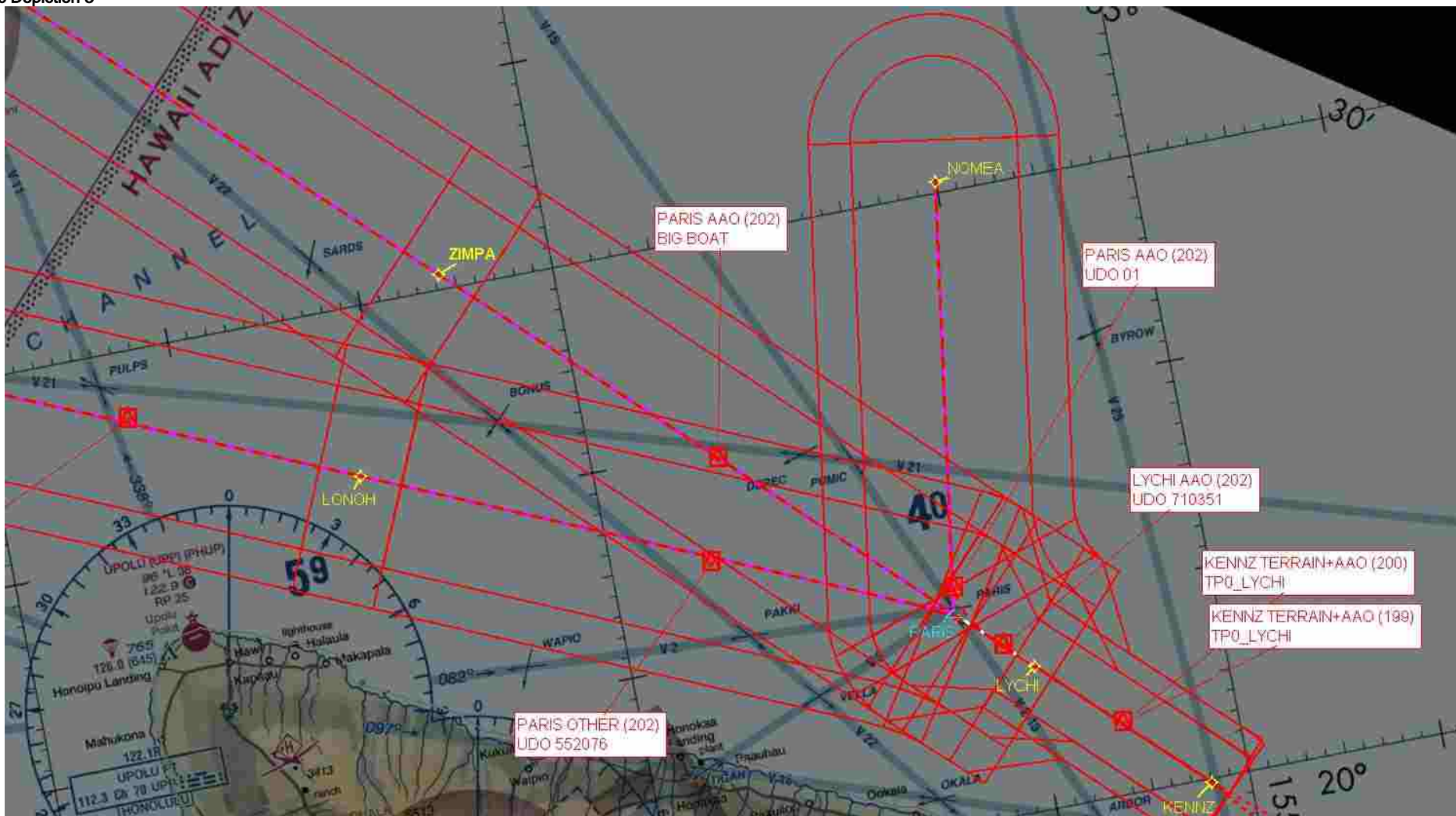


FEDERAL AVIATION ADMINISTRATION  
FLIGHT STANDARDS SERVICE  
STANDARD TERMINAL ARRIVAL (STAR)

Bearings, headings, courses, tracks and radials are magnetic. Elevations and altitudes are in feet, MSL. Altitudes are minimum altitudes unless otherwise indicated.  
Distances are in nautical miles (NM). Graphic depictions attached.

Arrival Name	Number	STAR Computer Code	Superseded Number	Dated	Effective Date
LYCHI RNAV	ONE	PARIS.LYCHI1	NONE		

Graphic Depiction 3





FEDERAL AVIATION ADMINISTRATION  
FLIGHT STANDARDS SERVICE  
STANDARD TERMINAL ARRIVAL (STAR)

Bearings, headings, courses, tracks and radials are magnetic. Elevations and altitudes are in feet, MSL. Altitudes are minimum altitudes unless otherwise indicated. Distances are in nautical miles (NM). Graphic depictions attached.

Arrival Name	Number	STAR Computer Code	Superseded Number	Dated	Effective Date
LYCHI RNAV	ONE	PARIS.LYCHI1	NONE		

Graphic Depiction 4

