

Flight Procedures Cover Page	Task Action: Abbreviated Amendment	Task Type: IAP	Estimated Chart Date: 04/22/2021	APWS Task ID: 07087734FBC74985AB6DF8C83FD980B7	APWS Project ID: 9AB714805C9F4EE6BBB9C0DBA4EE4AFE
Procedure: ILS OR LOC RWY 28RAMDT 4D		Enroute: NO	Specialist: Krueger, Zachary		Agreement Number:
Airport ID: KMYF			Airport City: SAN DIEGO		State: CA
Facility ID: MYF	Facility Type: ILS	Flight Inspection Remark Type:			
<p>Procedure Comments: ABBREVIATED AMENDMENT COMPLETED USING PENDING DATA.</p> <p>PROCESSED IAW AIRCRAFT OPERATIONS GROUP (AJF-10) MEMO, APRIL 29, 2020, SUBJECT: FLIGHT INSPECTION REVIEW NOT REQUIRED</p> <p>ADDED CHART NOTE: CIRCLING RWY 10L, 23,28L NA AT NIGHT, AND NEW CIRCLING RADII.</p> <p>CONTACT DONALD LANIER, AJV-A430, 405-954-8242</p>					

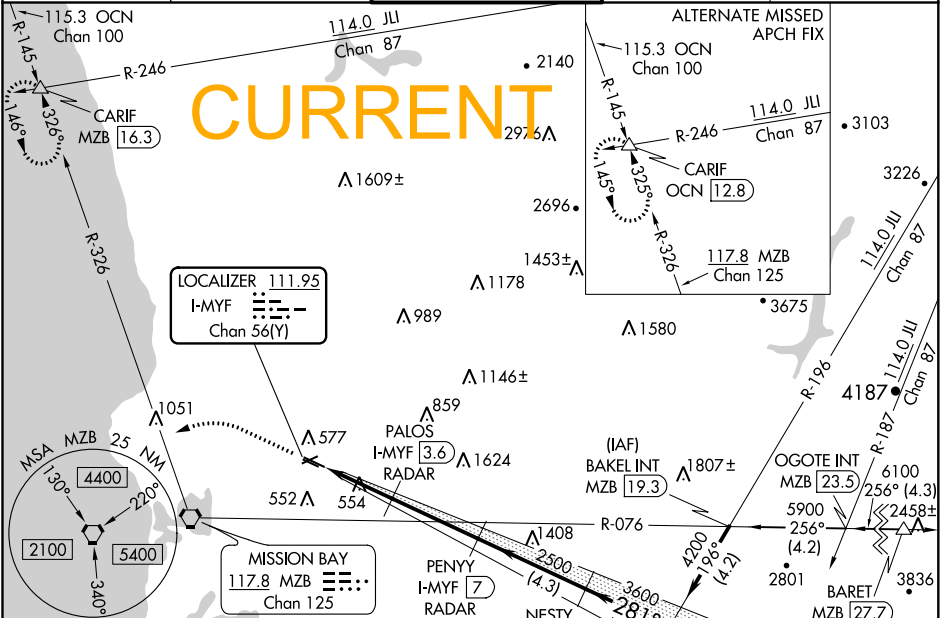


LOC/DME I-MYF	APP CRS	Rwy Idg	3399
111.95	281°	TDZE	423
Chan 56(Y)		Apt Elev	427

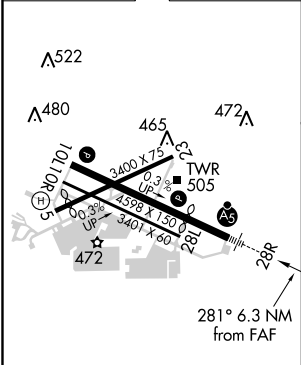
ILS or LOC RWY 28R
MONTGOMERY-GIBBS EXECUTIVE (MYF')

DME or RADAR required.	MALSR	MISSED APPROACH: Climb to 1100 then climbing left turn to 3000 on heading 270° and MZB VORTAC R-326 to CARIF INT/MZB 16.3 DME and hold.
Rwy 28R helicopter visibility reduction below ¾ SM NA.		

ATIS 126.9	SOCAL APP CON 124.35 279.625	MONTGOMERY TOWER ★ 119.2 (CTAF) 0 269.4	GND CON 118.225	CLNC DEL 123.725
---------------	---------------------------------	--	--------------------	---------------------



ELEV 427	TDZE 423
----------	----------

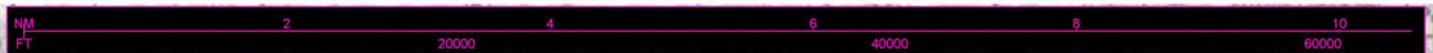


REIL Rwy 28L					
MIRL Rwy 10L-28R					
FAF to MAP 6.3 NM					
Knots	60	90	120	150	180
Min:Sec	6:18	4:12	3:09	2:31	2:06

1100	3000	MZB	CARIF							
↑	hdg 270°	R-326	△							
* LOC only										
PALOS I-MYF 3.6 RADAR										
PENYU I-MYF 7 RADAR										
NESTY I-MYF 11.2 RADAR										
MIBBY INT I-MYF 14.5 RADAR										
JLI I-MYF 29.6 RADAR										
GS 3.00° TCH 41										
1.1 NM 1.8 NM 3.4 NM 4.3 NM 3.3 NM										
CATEGORY	A			B			C			D
S-ILS 28R	673-¾			250 (300-¾)						NA
S-LOC 28R	820-¾			397 (400-¾)						NA
CIRCLING	920-1			493 (500-1)						NA

SW-3, 16 JUL 2020 to 13 AUG 2020

SW-3, 16 JUL 2020 to 13 AUG 2020



AIRPORT ID	KMYF
AIRPORT NAME	MONTGOMERY-GIBBS EXECUTIVE
CITY	SAN DIEGO
STATE	CA
Proc ID:	ILS OR LOC RWY 28
Amdt #	4D
Scale	1:100,000

