

Flight Procedures Cover Page	Task Action: FLIGHT CHECK	Task Type: IAP	Estimated Chart Date: 09/08/2022	APWS Task ID: 06EF22CB9261407EA278DBA2CF707A43	APWS Project ID: 931A9F90771349D9A431F72E873D8B1B
Procedure: RNAV (GPS) Y RWY 8L AMDT 3B		Enroute: NO	Specialist: Roslewski, Russell		Agreement Number:
Airport ID: PHNL		Airport City: HONOLULU		State: HI	
Facility ID:	Facility Type:	Flight Inspection Remark Type: New FC Slot			
<p><b>Procedure Comments:</b>          Processed IAW Technical Support Group (AJF-17) Memo dated 07/07/2021, Subject: Guidance for Procedural Changes Requiring Flight Inspection/Validation           Cancels FDC 1/8431.           Jason Kretschmer, 405-954-4019</p> <div style="display: flex; justify-content: space-between; align-items: flex-start;"> <div style="text-align: center;"> <p><i>Digitally signed by</i>  <b>JASON KRETSCHMER</b>              May 17, 2022</p> </div> <div style="text-align: right;"> <p>4/4/22 J. DuBois</p> </div> </div>					

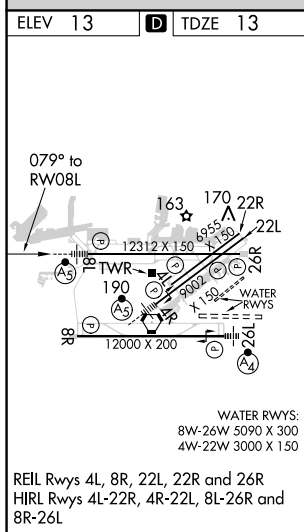
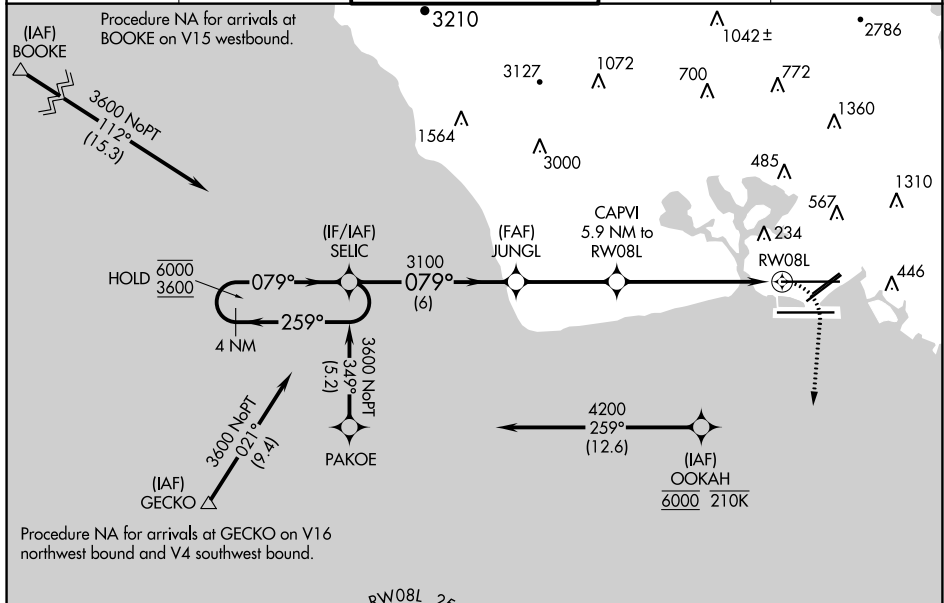


APP CRS	Rwy Idg <b>12312</b>
<b>079°</b>	TDZE <b>13</b>
	Apt Elev <b>13</b>

RNAV (GPS) Y RWY 8L  
DANIEL K INOUEY INTL (HNL) (PHNL)

RNP APCH.	MALSR	MISSED APPROACH: Climbing right turn to 3600 direct ALANA and hold, continue climb-in-hold to 3600.
<b>▽</b> Circling Rwy 22R NA at night. For inop ALS, increase Cats C, D, and E visibility to 1 3/8 SM. Circling NA to sea lanes 4W, 8W, 22W, and 26W. Circling NA for Cats A and B northwest of Rwy 8L-22R. Circling NA for Cats C and D north of Rwy 8L-26R. OOKAH transition NA for Cat E aircraft.		

D-ATIS	HCF APPROACH	HONOLULU TOWER	GND CON	CLNC DEL
<b>127.9 251.15</b>	<b>118.3 269.0</b>	<b>118.1 257.8</b> <b>123.9 273.575</b> (Rwy 8R/26L)	<b>121.9 348.6</b>	<b>121.4 281.4</b>



<div><div><div>MSA RW08L 25 NM</div><div>5300</div><div></div></div><div><div>ALANA</div><div></div><div>351°</div><div>171°</div><div>4 NM</div></div></div>						
<div><div>VGSI and descent angles not coincident (VGSI Angle 3.00/TCH 71).</div><div><div>4 NM Holding Pattern</div><div>SEJIC</div><div>JUNGL</div><div>CAPVI</div><div>5.9 NM to RW08L</div><div>1.2 NM to RW08L</div><div>RW08L</div></div><div><div>6000</div><div>3600</div><div>259°</div><div>079°</div><div>079°</div><div>3100</div><div>3.00°</div><div>TCH 56</div><div>1940</div><div>6 NM</div><div>3.6 NM</div><div>4.7 NM</div><div>1.2</div></div></div>						
CATEGORY	A		B	C	D	E
LNAV MDA	480-1/2		467 (500-1/2)	480-1 467 (500-1)		
CIRCLING	500-1 487 (500-1)	640-1 627 (700-1)	760-2 1/4 747 (800-2 1/4)	1260-3 1247 (1300-3)	NA	

[illegible]

Circling CAT C CRANE (519)  
15-024622