

Flight Procedures Cover Page	Task Action: P-NOTAM	Task Type: IAP	Estimated Chart Date: 10/06/2022	APWS Task ID: 067F39E97EFA481692A7B3A5D2FF38FB	APWS Project ID: 67B3286F745448F599391D6FD2626AB9
Procedure: RNAV (GPS) RWY 3 AMDT 0B		Enroute: NO	Specialist: Miller, Ralph		Agreement Number:
Airport ID: KTTF			Airport City: MONROE		State: MI
Facility ID:	Facility Type:	Flight Inspection Remark Type:			
<div>Procedure Comments: ORDER 8260.3, CHAPTER 2, NEW CIRCLING CRITERIA APPLIED ACTIVE DATA USED. INCORPORATES T NOTAM (2/1184) CONTACT JASON KRETSCHMER, AJV-A421, 405-954-4019. <div>Digitally signed by JASON KRETSCHMER Aug 19, 2022</div></div> <div>QUALITY 47 CHECKED QUALITY 33 CHECKED</div>					

MONROE, MICHIGAN

AL-5642 (FAA)

21112

APP CRS	Rwy Idg	4997
027°	TDZE	614
	Apt Elev	616

OLD
RNAV (GPS) RWY 3
 CUSTER (TTF)

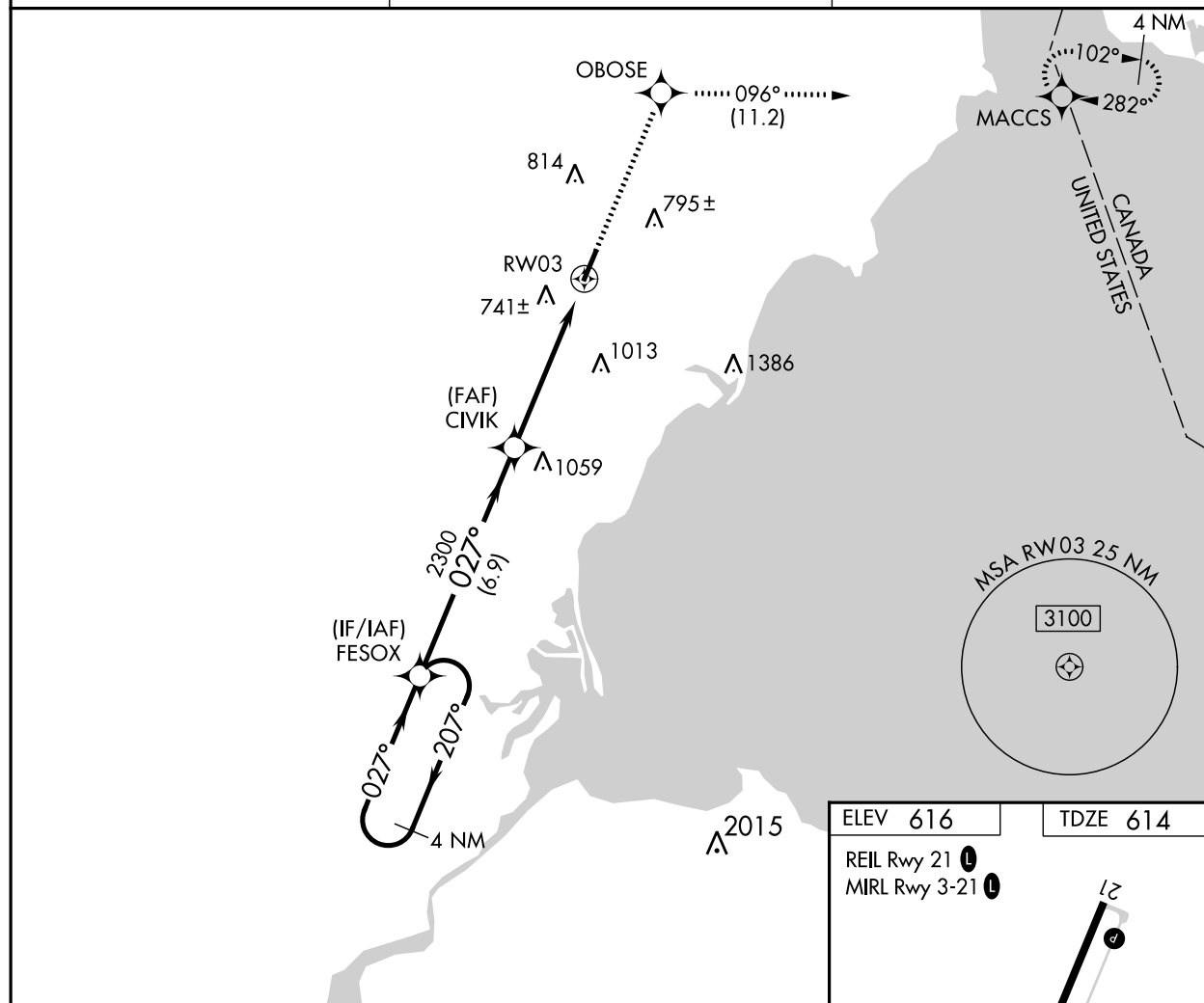
RNP APCH.



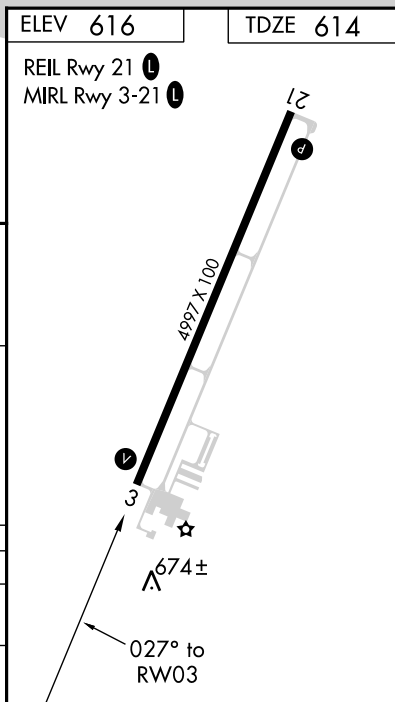
When local altimeter setting not received, use Detroit Metro Wayne County altimeter setting and increase all MDA 60 feet, LNAV Cat C/D visibility $\frac{1}{4}$ SM, and Circling Cat C visibility $\frac{1}{4}$ SM. Rwy 3 helicopter visibility reduction below 1 SM NA. Straight-in Rwy 3 NA at night.

MISSED APPROACH: Climb to 3000 direct OBOSE and on track 096° to MACCS and hold.

AWOS-3 119.075	DETROIT APP CON 134.3 363.2	UNICOM 122.7 (CTAF) 0
--------------------------	---------------------------------------	---------------------------------



4 NM Holding Pattern		FESOX	3000	OBOSE	tr 096°	MACCS
3000		207°	027°	027°		
VGSI and descent angles not coincident (VGSI Angle 4.00/TCH 58).		2300				
		6.9 NM		5.1 NM		
CATEGORY	A	B	C	D		
LNAV MDA	1100-1	486 (500-1)	1100-1 $\frac{1}{4}$ 486 (500-1 $\frac{1}{4}$)	1100-1 $\frac{1}{2}$ 486 (500-1 $\frac{1}{2}$)		
CIRCLING	1120-1 504 (600-1)	1180-1 564 (600-1)	1180-1 $\frac{1}{2}$ 564 (600-1 $\frac{1}{2}$)	1180-2 564 (600-2)		



EC-1, 16 JUN 2022 to 14 JUL 2022

EC-1, 16 JUN 2022 to 14 JUL 2022

MONROE, MICHIGAN

Orig-A 24MAY18

41°56'N-83°26'W

 CUSTER (TTF)
RNAV (GPS) RWY 3

KTTF
CUSTER
MONROE, MI
NEW CIRCLING AREA
1:100,000K
RADII: 1.30, 1.83, 2.87, 3.75

