

Flight Procedure Tracking Form		Action: AMENDMENT	Task Type: IAP	Date Open: 10/01/2019	Task #: 2019100127475001002	Request #: 20191001274750
Procedure: RNAV (GPS) RWY 19R AMDT 2C			Airport ID: KMKE	Airport: GENERAL MITCHELL INTL		Reimbursable #: NO
City: MILWAUKEE	ST: WI	GPS #:	Estimated Chart Date: 03/26/2020		FICO #:	
Fac ID: N/A		Fac. Type:		Specialist: RUSSELL ROSLEWSKI		
Procedure Review						
	Rec'd	Rel'd	Full Name	Comments		
Lead:	10/01/2019			<div style="display: flex; justify-content: space-between;"> <div> QUALITY 20 CHECKED </div> <div> <i>Digitally signed by</i> BRIAN J BICKETT Jan 05, 2020 </div> <div> QUALITY 26 CHECKED </div> </div>		
QA:						
Liaison:						
Procedure Comments: ENROUTE-NON Remark Type: INFORMATION P-NOTAM NEW CIRCLING AREAS BASED ON EXISTING PROCEDURES AT AIRPORT. PROCESSED IAW AIRCRAFT OPERATIONS GROUP (AJW-33) MEMO, OCTOBER 3, 2018, SUBJECT: FLIGHT INSPECTION REVIEW NOT REQUIRED. DAVE DANNER, 405-954-5077						

WAAS CH 99322 W19A	APP CRS 191°	Rwy Idg 9204 TDZE 672 Apt Elev 729
--	------------------------	---

RNAV (GPS) RWY 19R
GENERAL MITCHELL INTL (MKE)

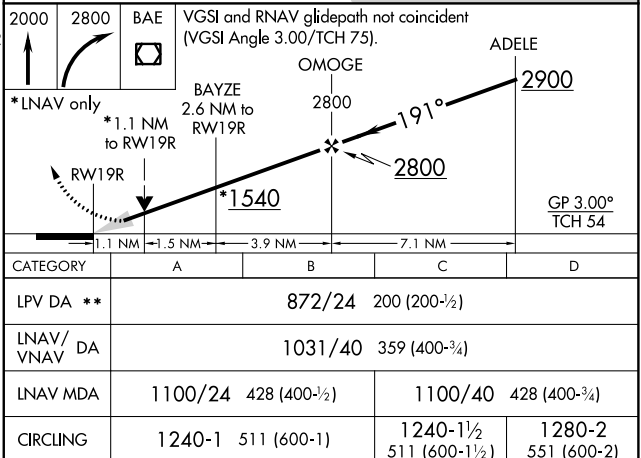
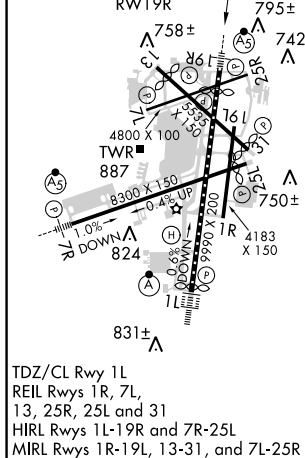
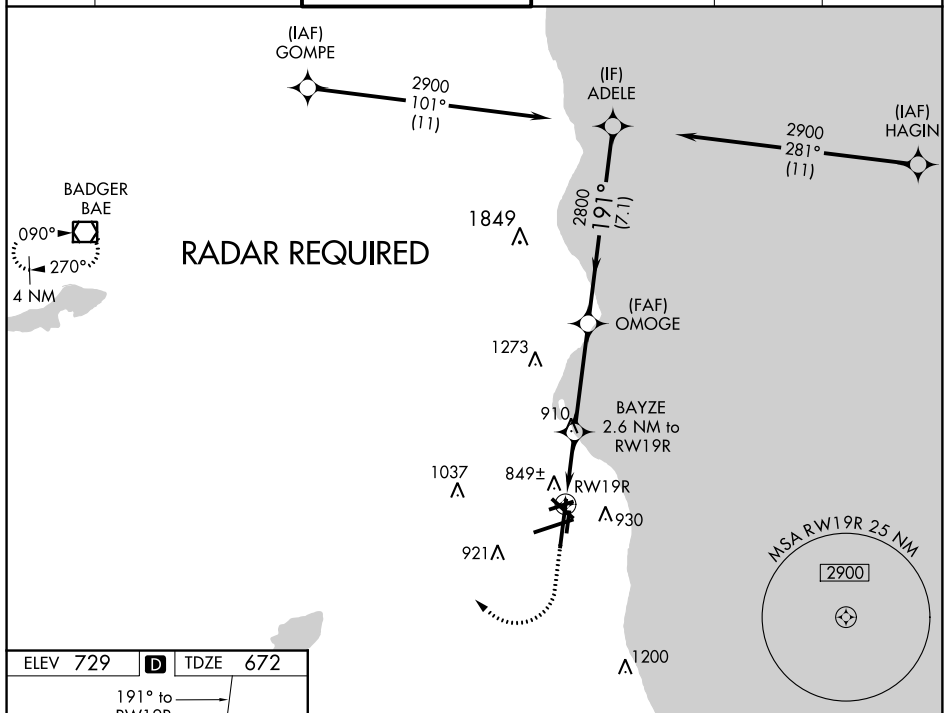
T For uncompensated Baro-VNAV systems, LNAV/VNAV NA below -22°C (-7°F) or above 39°C (102°F). DME/DME RNP-0.3 NA. For inop MALSR, increase LNAV/VNAV all Cats visibility to 1½ mile. ** RVR 1800 authorized with use of FD or AP or HUD to DA.

MALSR



MISSED APPROACH: Climb to 2000 then climbing right turn to 2800 direct BAE VOR/DME and hold.

D-ATIS 126.4	MILWAUKEE APP CON 126.5 307.0	MILWAUKEE TOWER 124.575 269.05	GND CON 121.8 263.125	CLNC DEL 120.8	CPDLC
-----------------	----------------------------------	-----------------------------------	--------------------------	-------------------	-------



MILWAUKEE, WISCONSIN
Amdt 2B 01FEB18

42°57'N-87°54'W

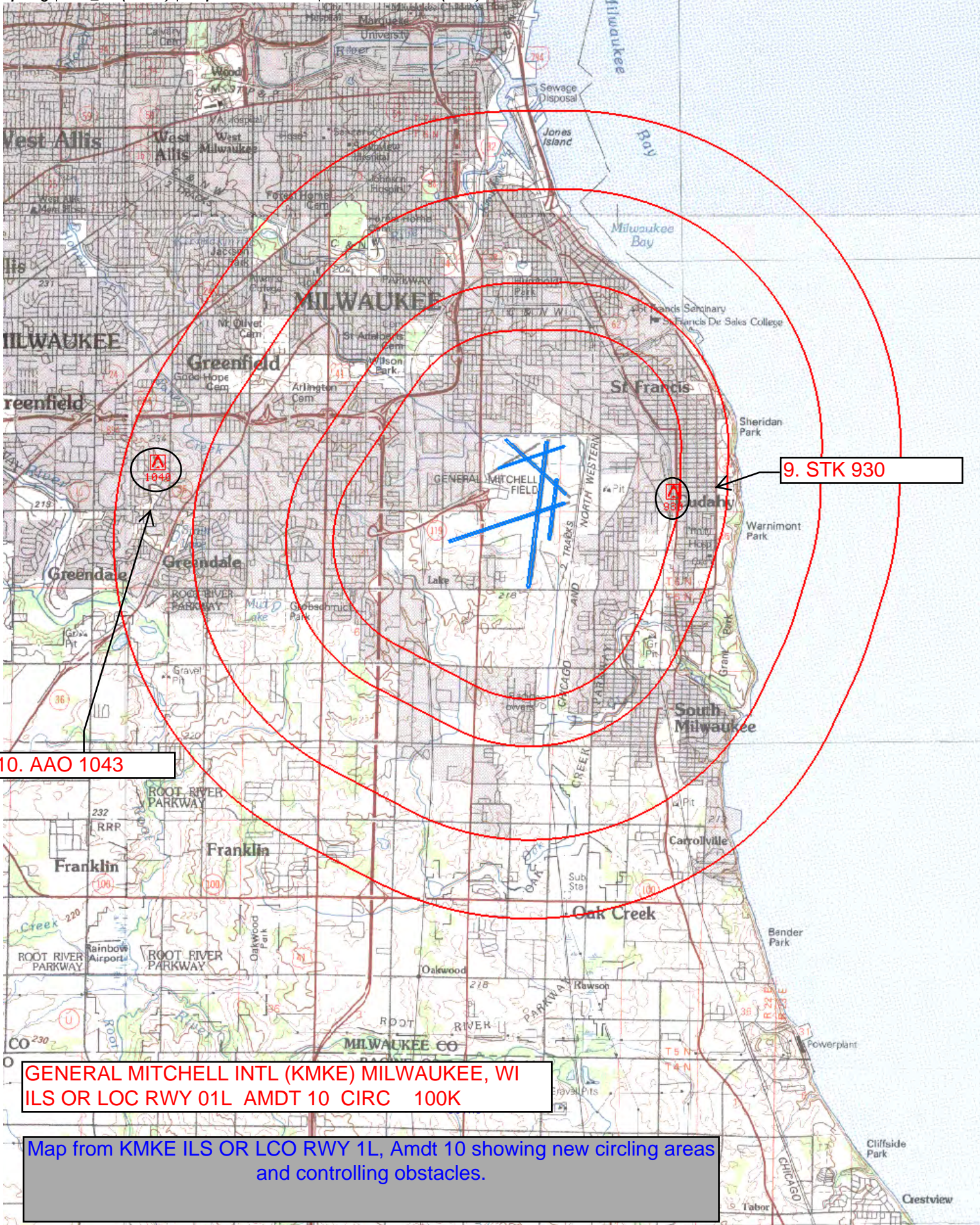
GENERAL MITCHELL INTL (MKE)
RNAV (GPS) RWY 19R

EC-3, 07 NOV 2019 to 05 DEC 2019

EC-3, 07 NOV 2019 to 05 DEC 2019

NM 1 2 3 4 5 6 7 8 9 10
FT 8000 16000 24000 32000 40000 48000 56000 64000

fporeg | mke_011 (PROD) | 2 Apr 2018 15:35:58 | 1" = 8333.3 feet (MAP)



9. STK 930

10. AAO 1043

GENERAL MITCHELL INTL (KMKE) MILWAUKEE, WI
ILS OR LOC RWY 01L AMDT 10 CIRC 100K

Map from KMKE ILS OR LCO RWY 1L, Amdt 10 showing new circling areas
and controlling obstacles.