

FEDERAL AVIATION ADMINISTRATION
FLIGHT STANDARDS SERVICE
STANDARD TERMINAL ARRIVAL (STAR)

Bearings, headings, courses, tracks and radials are magnetic. Elevations and altitudes are in feet, MSL. Altitudes are minimum altitudes unless otherwise indicated.
Distances are in nautical miles (NM). Graphic depictions attached.

| Arrival Name | Number | STAR Computer Code | Superseded Number | Dated | Effective Date |
|---------------------|------------|---------------------|-------------------|-------------------|----------------|
| OSVEE (RNAV) | TWO | OSVEE.OSVEE2 | ONE | 01/10/2013 | |

TRANSITION ROUTES:

| Transition Name | Transition Computer Codes | From FIX/NAVAID | To FIX/NAVAID | Course | Distance | MEA | MOCA | MAA | Crossing Altitudes / Fixes |
|-----------------|---------------------------|-----------------|---------------|--------|----------|-------|------|-----|----------------------------|
| LIBBO | LIBBO.OSVEE2 | LIBBO | LIBBO | | | | | | |
| | | | TAPOC | 307.69 | 76.76 | FL180 | | | |
| | | | PUBOC | 312.06 | 24.38 | FL180 | | | AT/ABOVE FL300 |
| | | | JESTE | 350.50 | 19.96 | 12000 | | | AT/ABOVE FL270 |
| | | | MOLEN | 350.18 | 20.73 | 10000 | | | BETWEEN FL220 AND FL240 |
| ROVUE | ROVUE.OSVEE2 | ROVUE | ROVUE | | | | | | |
| | | | HANAI | 030.42 | 41.23 | FL280 | | | AT/ABOVE FL280 |
| | | | MOLEN | 040.08 | 26.59 | 10000 | | | BETWEEN FL220 AND FL240 |
| ZONSO | ZONSO.OSVEE2 | ZONSO | ZONSO | | | | | | |
| | | | HANAI | 080.16 | 39.44 | FL280 | | | AT/ABOVE FL280 |
| | | | MOLEN | 040.08 | 26.59 | 10000 | | | BETWEEN FL220 AND FL240 |

ARRIVAL ROUTE DESCRIPTION:

FROM MOLEN ON TRACK 057.56/49.55 TO OCOVA.

LANDING RWY 3L: FROM OCOVA ON TRACK 056.61/2.95 TO CROSS OSVEE AT 7000, THEN ON HEADING 023.00. EXPECT RADAR VECTORS TO FINAL APPROACH COURSE.

LANDING RWY 21L/R: FROM OCOVA ON TRACK 056.61/2.95 TO CROSS OSVEE AT 7000, THEN ON HEADING 023.00. EXPECT RADAR VECTORS TO FINAL APPROACH COURSE.

PBN REQUIREMENT NOTES

RNAV 1 - DME/DME/IRU OR GPS

EQUIPMENT REQUIREMENT NOTES

RADAR REQUIRED

PROCEDURAL DATA NOTES:

FIXES AND/OR HOLDING PATTERNS:

CHART HOLDING AT SEATO: HOLD N, LT, 160.00 INBOUND, 9 NM LEGS.

COMMUNICATIONS:

CHART: TRAVIS APP CON. CHART: TWR. CHART: GND CON.

AIRPORTS SERVED:

TRAVIS AFB, FAIRFIELD, CA (KSUU)

LOST COMMUNICATIONS PROCEDURE:

FROM OSVEE, PROCEED DIRECT SEATO. EXECUTE ILS OR LOC RWY 21L OR TACAN RWY 3L APPROACH. IF UNABLE, HOLD AT SEATO AS DEPICTED, MAINTAIN 6000.

FEDERAL AVIATION ADMINISTRATION
FLIGHT STANDARDS SERVICE
STANDARD TERMINAL ARRIVAL (STAR)

Bearings, headings, courses, tracks and radials are magnetic. Elevations and altitudes are in feet, MSL. Altitudes are minimum altitudes unless otherwise indicated.
Distances are in nautical miles (NM). Graphic depictions attached.

| Arrival Name | Number | STAR Computer Code | Superseded Number | Dated | Effective Date |
|---------------------|------------|---------------------|-------------------|-------------------|----------------|
| OSVEE (RNAV) | TWO | OSVEE.OSVEE2 | ONE | 01/10/2013 | |

REMARKS:

ABBREVIATED AMENDMENT DOES NOT MEET PERIODIC REVIEW REQUIREMENTS.

ADDITIONAL FLIGHT DATA:

DME/DME ASSESSMENT: SAT (RNP 2.0)

REFERENCE MAGNETIC VARIATION = KSUU 13E/2020

CHART AT OSVEE TERMINUS: KSUU LANDING RWY 3L, 21L/R.

CHART I-TXV AND I-SUU LOCALIZERS.

CHART I-TXV AND I-SUU LOCALIZER FREQUENCIES.

FLIGHT INSPECTED BY:

PROCESSED IAW TECHNICAL SUPPORT GROUP (AJF-17) MEMO DATED 07/07/2021, SUBJECT: GUIDANCE FOR PROCEDURAL CHANGES REQUIRING FLIGHT INSPECTION VALIDATION

Digitally signed by

DAVID DANNER

Jan 31, 2022

Signature

Digitally signed by

DAVID DANNER

Jan 31, 2022

Digitally signed by

DAVID DANNER

Jan 31, 2022

Signature

DEVELOPED BY:

DAN POWELL

AJV-A442

12/01/2021

Name

Organization

Date

APPROVED BY:

PAT MULQUEEN

AJV-A440

Name

Organization

Date

CHANGES:

- ROUTE DESCRIPTION CHANGED FROM LANDING RWY 21R TO LANDING RWY 21L/R.
- LOST COMM CHANGED TO INCLUDE ILS OR LOC RWY 21L, OR TACAN RWY 3L.
- LOST COMM INSTRUCTIONS CHANGED FROM: "FROM OSVEE, PROCEED DIRECT SEATO. EXECUTE ILS OR LOC RWY 21R OR TACAN TWY 3L APPROACH. IF UNABLE, HOLD AT SEATO AS DEPICTED, MAINTAIN 6000;" TO: "FROM OSVEE, PROCEED DIRECT SEATO. EXECUTE ILS OR LOC RWY 21L OR TACAN RWY 3L APPROACH. IF UNABLE, HOLD AT SEATO AS DEPICTED, MAINTAIN 6000."
- REMOVED LOCALIZER RWY 21R (I-MZP) AND FREQUENCY FROM CHART.
- ADDED LOCALIZER RWY 21L DEPICTION AND FREQUENCY (110.1) TO CHART.
- ADDED TERMINUS DATA TO ADDITIONAL FLIGHT DATA.
- ALL MAGNETIC COURSES/TRACKS INCREASED 3 DEGREES IN ACCORDANCE WITH MAG VAR CHANGE FROM 16E/1985 TO 13E/2020.
- REMOVED MEA'S FROM COMMON ROUTE.

REASONS:

- PROPONENT REQUESTED TO ADD RWY 21L TO APPROACH PLATE IN ORDER TO FACILITATE FMS PROCESSING.
- PROPONENT REQUESTED TO ADD RWY 21L TO LOST COMM INSTRUCTIONS.
- VERBIAGE REQUIRED TO REFLECT NEW RWY 21L LOST COMM PROCEDURES.
- RWY 21R LOCALIZER WAS ERRONEOUSLY CHARTED.

FEDERAL AVIATION ADMINISTRATION
FLIGHT STANDARDS SERVICE
STANDARD TERMINAL ARRIVAL (STAR)

Bearings, headings, courses, tracks and radials are magnetic. Elevations and altitudes are in feet, MSL. Altitudes are minimum altitudes unless otherwise indicated.
Distances are in nautical miles (NM). Graphic depictions attached.

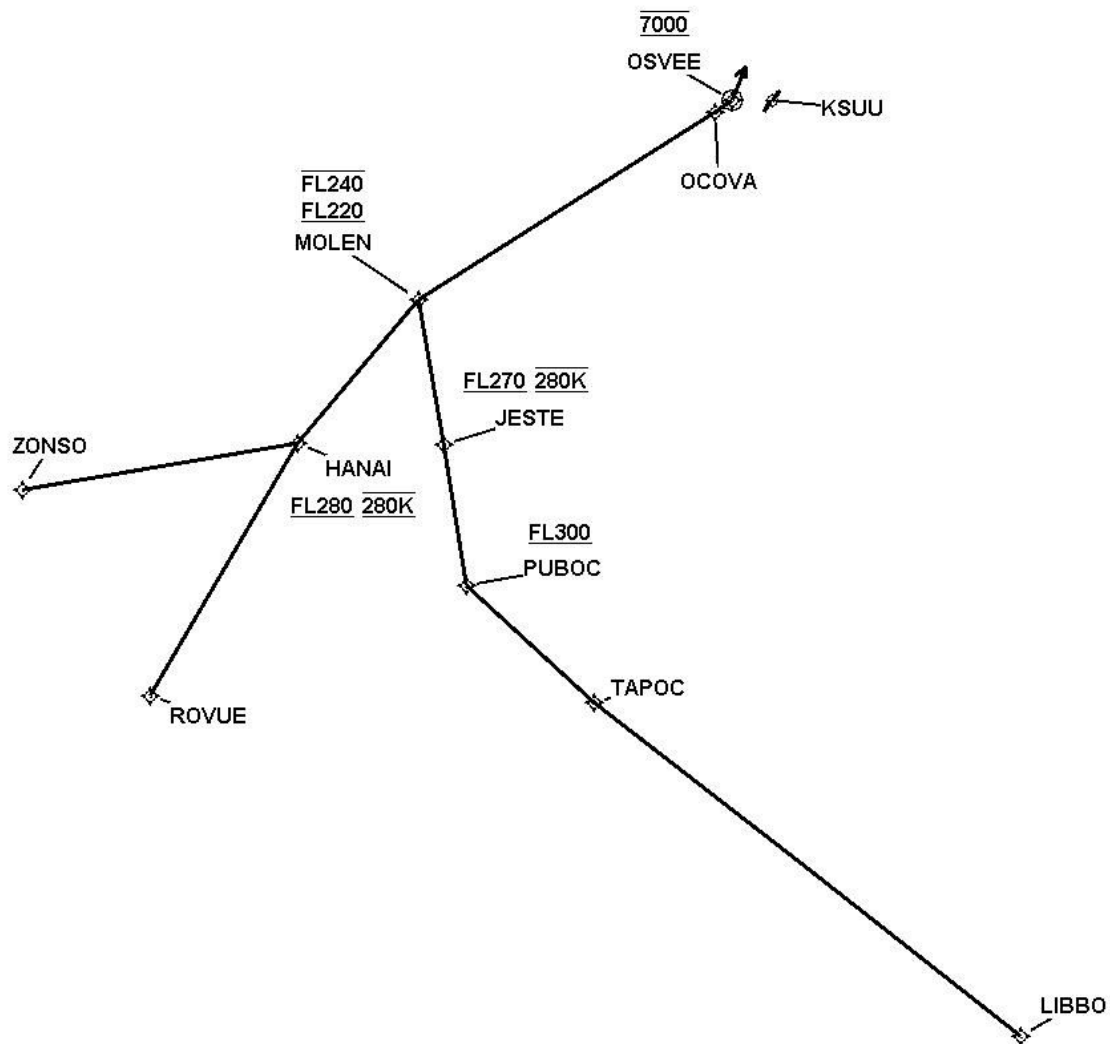
| Arrival Name | Number | STAR Computer Code | Superseded Number | Dated | Effective Date |
|---------------------|------------|---------------------|-------------------|-------------------|----------------|
| OSVEE (RNAV) | TWO | OSVEE.OSVEE2 | ONE | 01/10/2013 | |

5. PROPONENT REQUESTED LOCALIZER RWY 21L AND FREQUENCY BE LISTED ON GRAPHICAL DEPICTION.
6. TERMINUS INFO MEETS CURRENT CRITERIA STANDARDS.
7. MAG VAR CHANGE.
8. NO LONGER CHARTED.

FEDERAL AVIATION ADMINISTRATION
FLIGHT STANDARDS SERVICE
STANDARD TERMINAL ARRIVAL (STAR)

Bearings, headings, courses, tracks and radials are magnetic. Elevations and altitudes are in feet, MSL. Altitudes are minimum altitudes unless otherwise indicated.
Distances are in nautical miles (NM). Graphic depictions attached.

| Arrival Name | Number | STAR Computer Code | Superseded Number | Dated | Effective Date |
|---------------------|--------|--------------------|-------------------|------------|----------------|
| OSVEE (RNAV) | TWO | OSVEE.OSVEE2 | ONE | 01/10/2013 | |
| Graphic Depiction 1 | | | | | |



FEDERAL AVIATION ADMINISTRATION
FLIGHT STANDARDS SERVICE
STAR (DATA RECORD)

| Arrival Name OSVEE (RNAV) | Number TWO | STAR Computer Code OSVEE.OSVEE2 | Superseded Number ONE | Dated 01/10/2013 | Effective Date | | | | |
|------------------------------|--------------------------|------------------------------------|--------------------------|---------------------|----------------|--------------|----------------|---------|--------------|
| FIX/NAVAID | LAT/LONG | C | FO/FB | LEG TYPE | TC | DIST (NM) | ALTITUDE | SPEED | REMARKS |
| En Route Transition | | | | | | | | | |
| LIBBO | 360000.00N / 1215000.00W | Y | | IF | | | | | LIBBO.OSVEE2 |
| TAPOC | 365913.41N / 1225041.62W | Y | FB | TF | 320.69 | 76.76 | | | |
| PUBOC | 371912.60N / 1230811.93W | Y | FB | TF | 325.06 | 24.38 | AT/ABOVE FL300 | | |
| JESTE | 373909.22N / 1230639.85W | Y | FB | TF | 003.50 | 19.96 | AT/ABOVE FL270 | AT 280K | |
| MOLEN | 375952.34N / 1230512.47W | Y | FB | TF | 003.18 | 20.73 | FL220BFL240 | | |
| En Route Transition | | | | | | | | | |
| ROVUE | 371402.24N / 1240749.55W | Y | | IF | | | | | ROVUE.OSVEE2 |
| HANAI | 374355.92N / 1233205.91W | Y | FB | TF | 043.42 | 41.23 | AT/ABOVE FL280 | AT 280K | |
| MOLEN | 375952.34N / 1230512.47W | Y | FB | TF | 053.08 | 26.59 | FL220BFL240 | | |
| En Route Transition | | | | | | | | | |
| ZONSO | 374617.05N / 1242144.57W | Y | | IF | | | | | ZONSO.OSVEE2 |
| HANAI | 374355.92N / 1233205.91W | Y | FB | TF | 093.16 | 39.44 | AT/ABOVE FL280 | AT 280K | |
| MOLEN | 375952.34N / 1230512.47W | Y | FB | TF | 053.08 | 26.59 | FL220BFL240 | | |
| Common Route | | | | | | | | | |
| MOLEN | 375952.34N / 1230512.47W | Y | | IF | | | FL220BFL240 | | MOLEN.OSVEE2 |
| OCOVA | 381607.81N / 1220552.67W | Y | FB | TF | 070.56 | 49.55 | | | |
| Runway Transition | | | | | | | | | |
| OCOVA | 381607.81N / 1220552.67W | Y | | IF | | | | | |
| OSVEE | 381709.59N / 1220221.61W | Y | FO | TF | 069.61 | 02.95 | AT 7000 | | |
| KSUU:RWY 3L | | | | VM | 036.00 | | | | |

FEDERAL AVIATION ADMINISTRATION
FLIGHT STANDARDS SERVICE
STAR (DATA RECORD)

| | | | | | |
|--------------|--------|--------------------|-------------------|------------|----------------|
| Arrival Name | Number | STAR Computer Code | Superseded Number | Dated | Effective Date |
| OSVEE (RNAV) | TWO | OSVEE.OSVEE2 | ONE | 01/10/2013 | |

| FIX/NAVAID | LAT/LONG | C | FO/FB | LEG TYPE | TC | DIST (NM) | ALTITUDE | SPEED | REMARKS |
|--------------------------|--------------------------|---|-------|-------------|--------|--------------|----------|-------|---------|
| Runway Transition | | | | | | | | | |
| OCOVA | 381607.81N / 1220552.67W | Y | | IF | | | | | |
| OSVEE | 381709.59N / 1220221.61W | Y | FO | TF | 069.61 | 02.95 | AT 7000 | | |
| KSUU:RWY 21L,RWY 21R | | | | VM | 036.00 | | | | |