

Flight Procedures Cover Page	Task Action: FLIGHT CHECK	Task Type: IAP	Estimated Chart Date: 08/07/2025	APWS Task ID: 04648364C03344D8B1B99CB8FA3ECAB4	APWS Project ID: DD041FB7418A461F942C7F66E9F3CF69
Procedure: RNAV (GPS) RWY 27 AMDT 1B		Enroute: YES	Specialist: Johnsen, Daniel		Agreement Number:
Airport ID: KEZI			Airport City: KEWANEE		State: IL
Facility ID:	Facility Type:	Flight Inspection Remark Type: New FC Slot			
<div>Procedure Comments:</div> <div>Minor amendment using active data for KEZI airport and runways.</div> <div>BDF VOR MON.</div> <div>CRC remainder changed to 8451FD51.</div> <div>Contact Allan Will, AJV-A423, (405) 954-6103.</div> <div><div>QUALITY 38 CHECKED</div><div>QUALITY 25 CHECKED</div></div>					

[illegible]

WAAS CH 56433 W27A	APP CRS 273°	Rwy Ldg TDZE 858 Apt Elev 858
--	------------------------	---

RNAV (GPS) RWY 27

KEWANEE MUNI (EZI)

RNP APCH - GPS.

▼

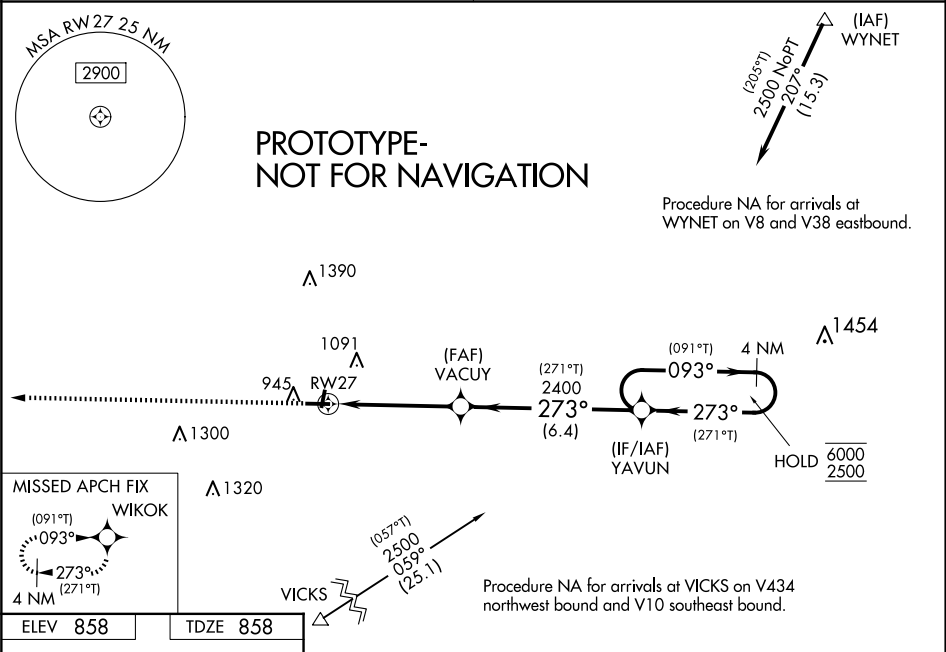
▲

NA

Baro-VNAV NA. Use GBG altimeter setting; when not received use MLL altimeter setting and increase LPV DA to 1213 feet, LNAV/VNAV DA to 1242 feet and all visibilities 1/8 SM; increase all MDAs 40 feet and LNAV visibility Cat C 3/8 SM, and Circling visibility Cat C 3/4 SM.

MISSED APPROACH:
Climb to 2500 direct WIKOK and hold.

QUAD CITY APP CON ★ 133.275 257.8	UNICOM 122.8 (CTAF) 0
---	---------------------------------



ELEV 858

TDZE 858

2500

WIKOK

VGSI and RNAV glidepath not coincident (VGSI Angle 3.00°/TCH 23).

4 NM Holding Pattern

VACU

2400

273°

(271°T)

2400

093°

(091°T)

6000

2500

GP 3.00°

TCH 40

61

2200 X 40

0.5% Up

▲ 965±

4500 X 75

273°

CATEGORY	A	B	C	D
LPV DA	1183-1	325 (400-1)		NA
LNAV/VNAV DA	1212-1	354 (400-1)		NA
LNAV MDA	1380-1	522 (600-1)	1380-1½ 522 (600-1½)	NA
CIRCLING	1380-1 522 (600-1)	1520-1 662 (700-1)	1520-1¾ 662 (700-1¾)	NA

MIRL Rwy 1-19 and 9-27 0

KEWANEE MUNI (KEZI)
KEWANEE, IL
RNAV (GPS) RWY 27, AMDT 1B
LPV FINAL
SCALE 1:100,000

MA LVL SFC
1419 MSL WINDMILL 17-075790

FINAL ASC

VACUY

KEWANEE MUNI (KEZI)
KEWANEE, IL
RNAV (GPS) RWY 27, AMDT 1B
LPV FINAL
SCALE 1:100,000

MA LVL SFC
1419 MSL WINDMILL 17-075790

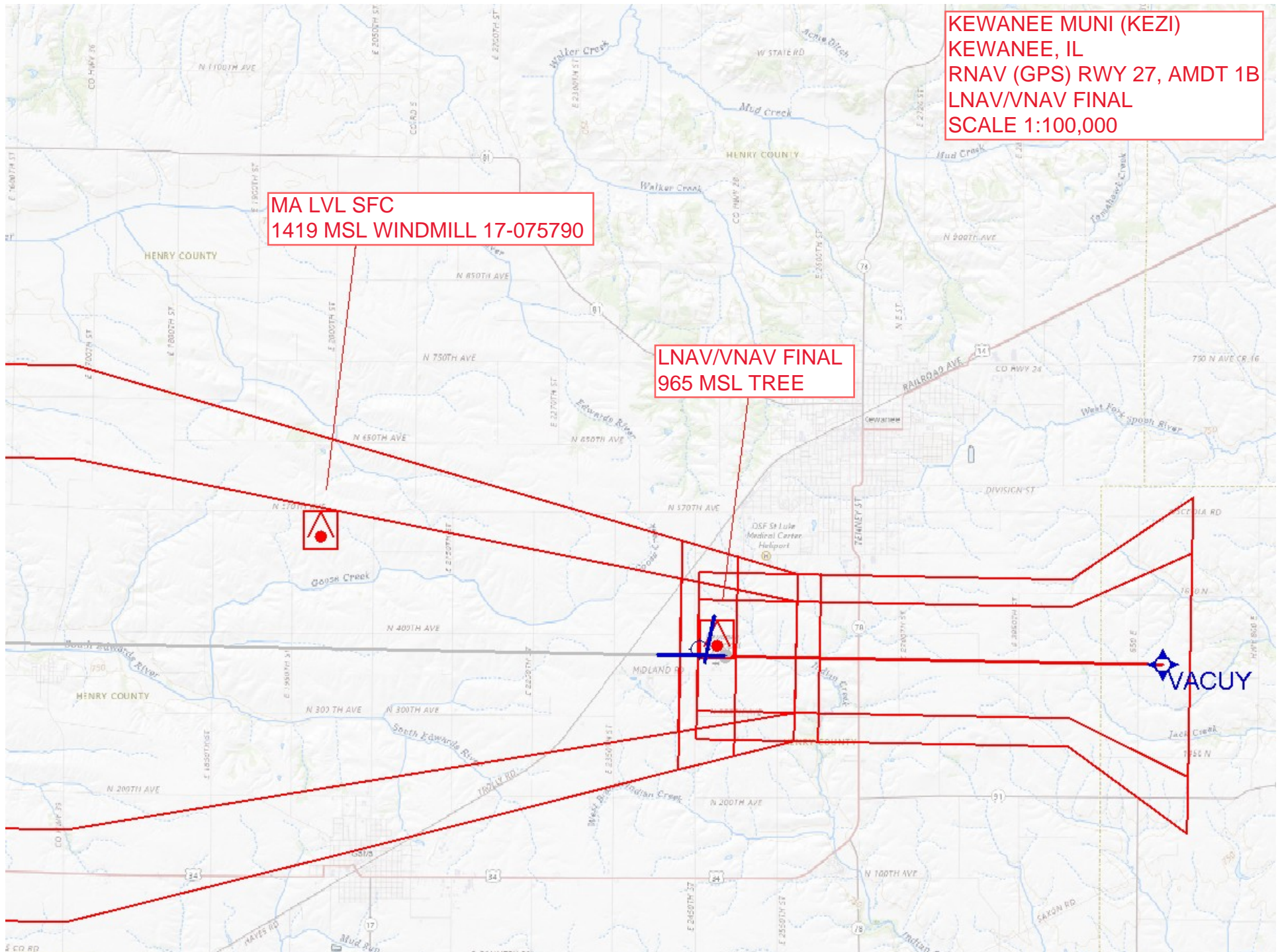
FINAL ASC

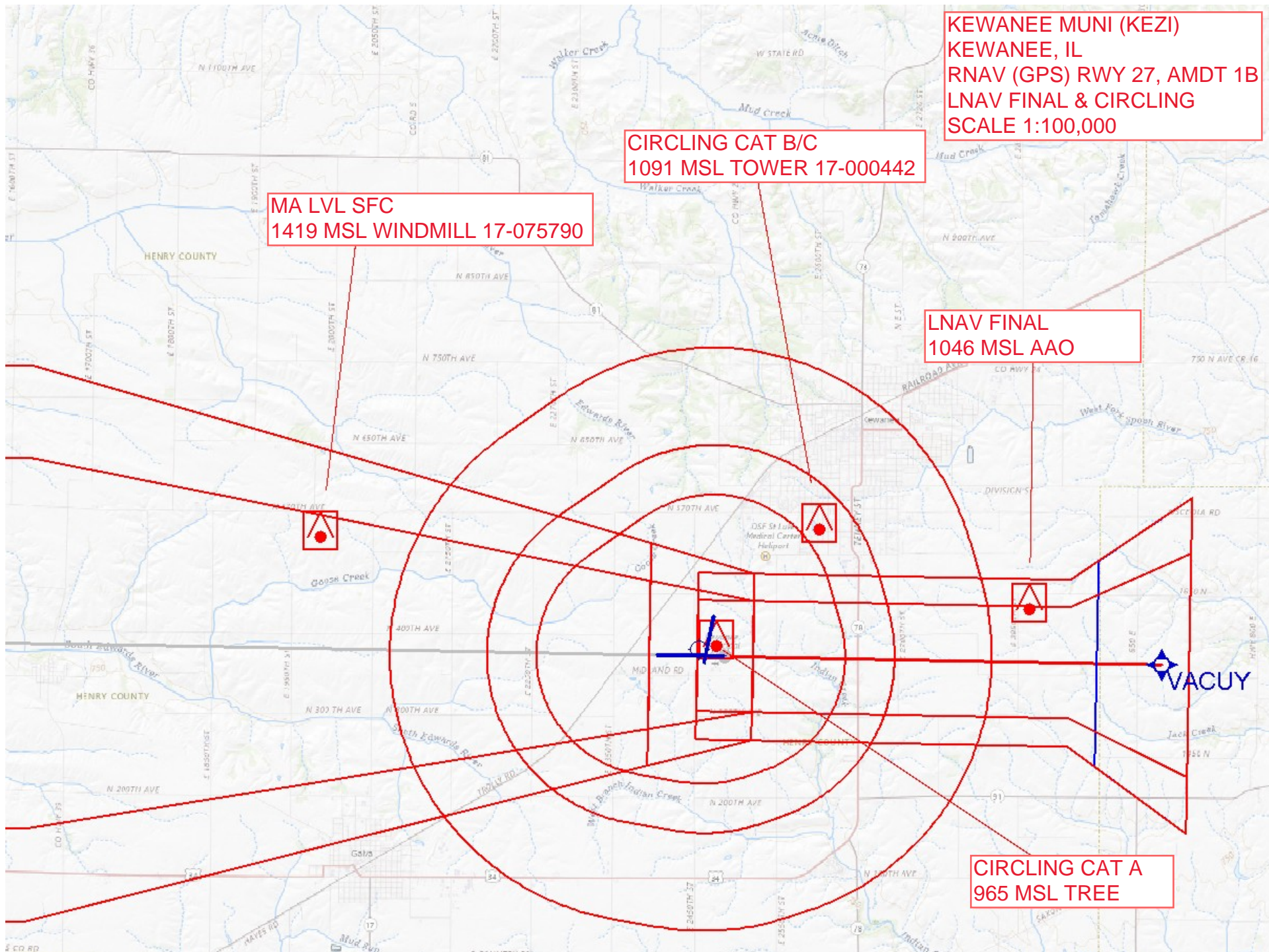
VACUY

KEWANEE MUNI (KEZI)
KEWANEE, IL
RNAV (GPS) RWY 27, AMDT 1B
LNAV/VNAV FINAL
SCALE 1:100,000

MA LVL SFC
1419 MSL WINDMILL 17-075790

LNAV/VNAV FINAL
965 MSL TREE





KEWANEE MUNI (KEZI)
KEWANEE, IL
RNAV (GPS) RWY 27, AMDT 1B
LNAV FINAL & CIRCLING
SCALE 1:100,000

CIRCLING CAT B/C
1091 MSL TOWER 17-000442

MA LVL SFC
1419 MSL WINDMILL 17-075790

LNAV FINAL
1046 MSL AAO

CIRCLING CAT A
965 MSL TREE