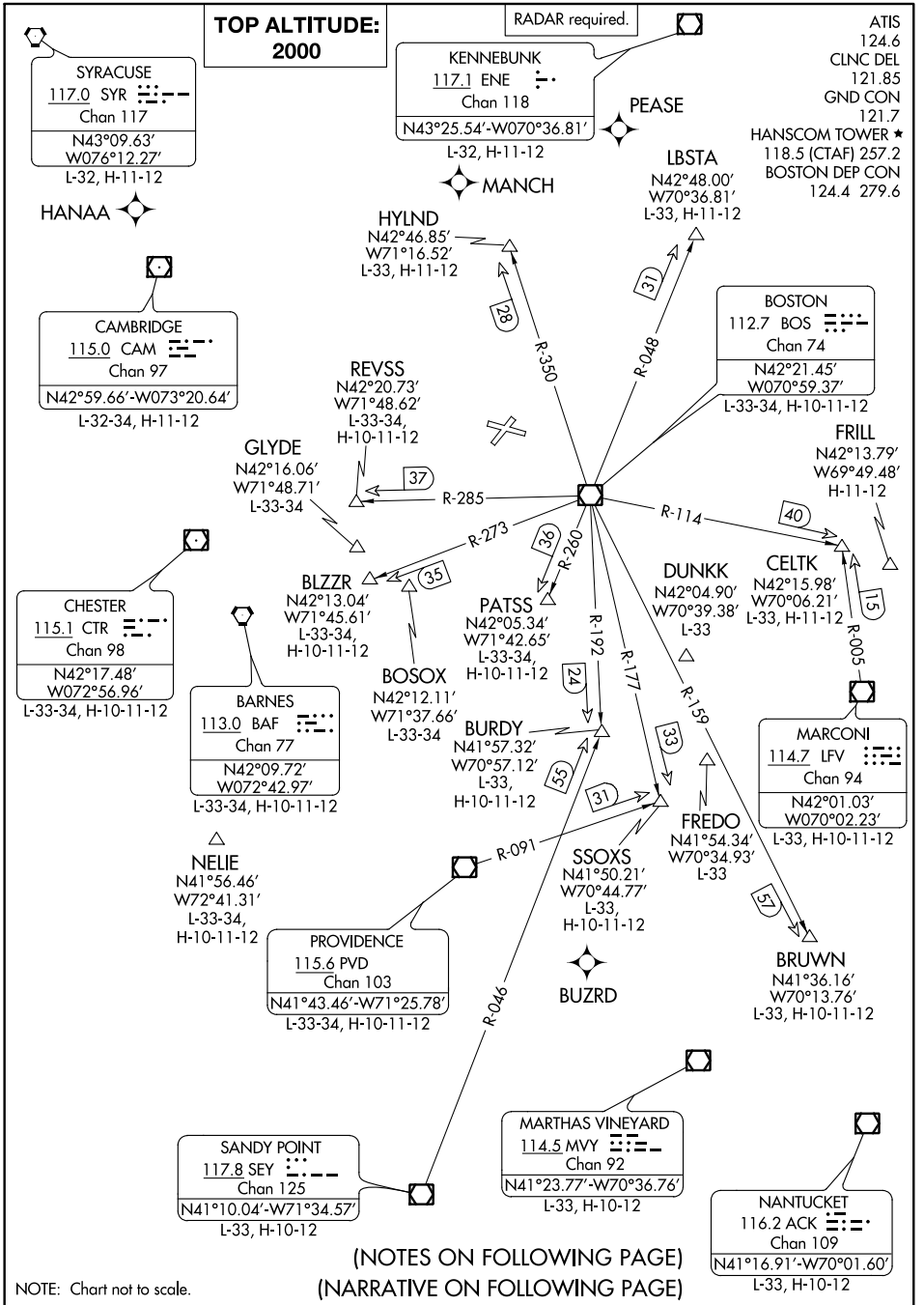


| | | | | | |
|---|--|--------------------------------|-------------------------------------|---|--|
| Flight Procedures Cover Page | Task Action: Abbreviated Amendment | Task Type: SID | Estimated Chart Date: 12/29/2022 | APWS Task ID: 02F674A3D20F4A678DA7FEB7970FBC3D | APWS Project ID: DAAA881EF8044AAE802B0E64CE008C77 |
| Procedure: BED HANSCOM FIVE DEPARTURE | | Enroute: YES | Specialist: Sickels, Dale | | Agreement Number: |
| Airport ID: KBED | | | Airport City: BEDFORD | | State: MA |
| Facility ID: BOS | Facility Type: VOR_DME | Flight Inspection Remark Type: | | | |
| <p>Procedure Comments: Processed IAW Technical Support Group (AJF-17) Memo Dated 07/07/2021 Guidance for Procedural Changes Requiring Flight Inspection/Validation.</p> <p>Adds MANCH and PEASE WPs to the procedure.</p> <p>Contact Jason Kretschmer, AJV-A421, 405-954-4019</p> | | | | | |

QUALITY
26
CHECKED

QUALITY
38
CHECKED

HANSCOM FIVE DEPARTURE





DEPARTURE ROUTE DESCRIPTION

TAKEOFF ALL RUNWAYS: Climb on heading as assigned by ATC, thence....
....expect RADAR vectors to assigned route/navaid/fix. Maintain 2000. Expect clearance to filed altitude/flight level within ten (10) minutes after departure.

- NOTE: Non-RNAV equipped aircraft can expect vectors on assigned route.
- NOTE: BLZZR DEPARTURES expect vectors on BOS R-273, DME required.
- NOTE: BRUWN DEPARTURES expect vectors on BOS R-159, DME required.
- NOTE: CELTK DEPARTURES expect vectors on BOS R-114.
- NOTE: HYLND DEPARTURES expect vectors on BOS R-350, DME required.
- NOTE: PATSS DEPARTURES expect vectors on BOS R-260, DME required.
- NOTE: REVSS DEPARTURES expect vectors on BOS R-285, DME required.
- NOTE: SSOXS DEPARTURES expect vectors on BOS R-177.

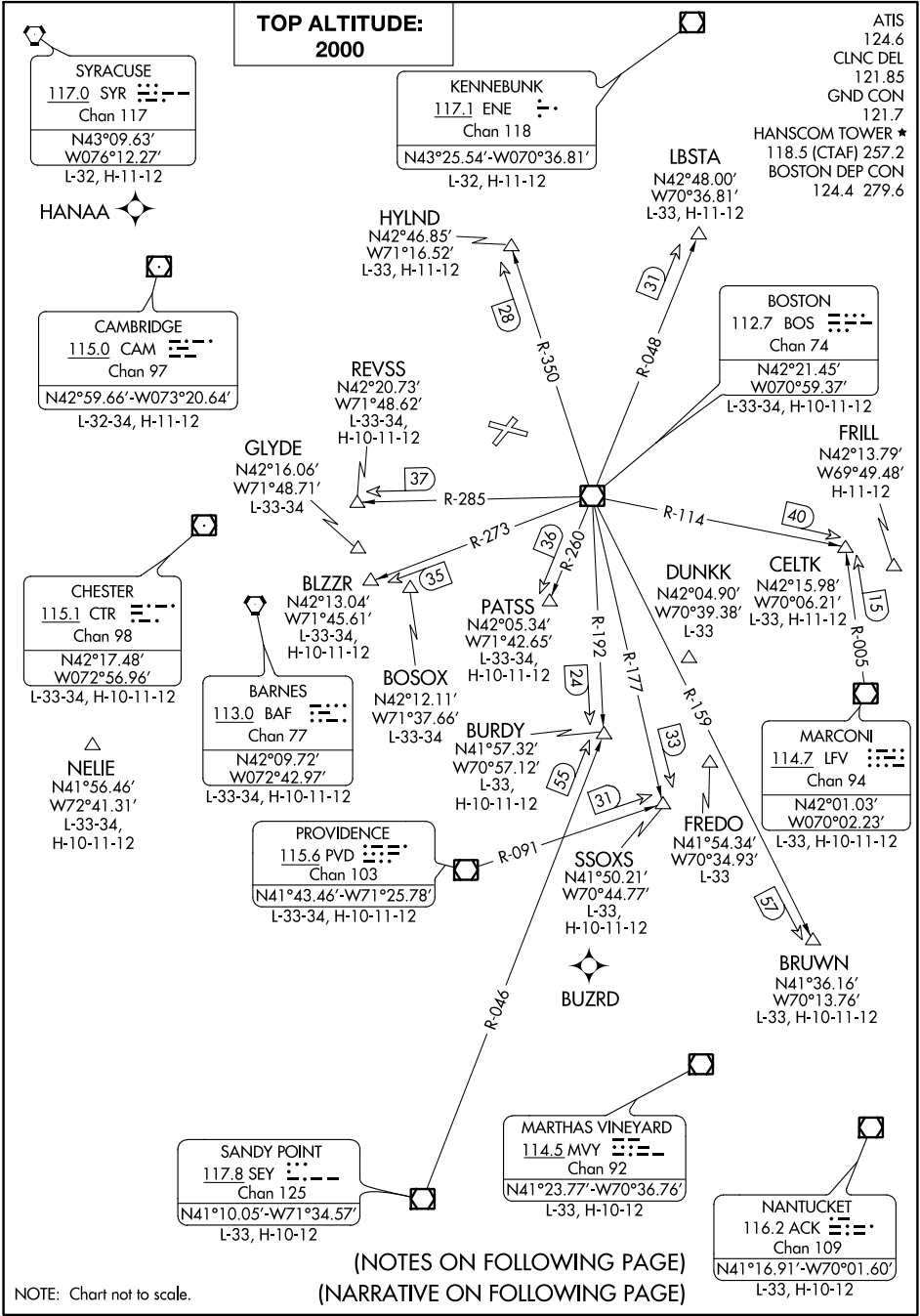
TAKEOFF MINIMUMS:
Rwys 5, 29: Standard.
Rwy 11: 300-1 or Standard with minimum climb of 258' per NM to 400.
Rwy 23: 300-1½ or Standard with minimum climb of 439' per NM to 400.

PROTOTYPE-NOT FOR NAVIGATION

HANSCOM FOUR DEPARTURE

NE-1, 11 AUG 2022 to 08 SEP 2022

NE-1, 11 AUG 2022 to 08 SEP 2022





DEPARTURE ROUTE DESCRIPTION

TAKEOFF ALL RUNWAYS: Climb heading as assigned by ATC, thence...

....expect RADAR vectors to assigned route/navaid/fix. Maintain 2000. Expect clearance to filed altitude/flight level within ten (10) minutes after departure.

- NOTE: RADAR required.
- NOTE: Non-RNAV equipped aircraft can expect vectors on assigned route.
- NOTE: BLZZR DEPARTURES expect vectors on BOS R-273, DME required.
- NOTE: BRUWN DEPARTURES expect vectors on BOS R-159, DME required.
- NOTE: CELTK DEPARTURES expect vectors on BOS R-114.
- NOTE: HYLND DEPARTURES expect vectors on BOS R-350, DME required.
- NOTE: PATSS DEPARTURES expect vectors on BOS R-260, DME required.
- NOTE: REVSS DEPARTURES expect vectors on BOS R-285, DME required.
- NOTE: SSOXS DEPARTURES expect vectors on BOS R-177.

TAKEOFF MINIMUMS:
Rwys 5, 29: Standard.
Rwy 11: 300-1 or Standard with minimum climb of 258' per NM to 400.
Rwy 23: 300-1½ or Standard with minimum climb of 439' per NM to 400.

NE-1, 11 AUG 2022 to 08 SEP 2022

NE-1, 11 AUG 2022 to 08 SEP 2022