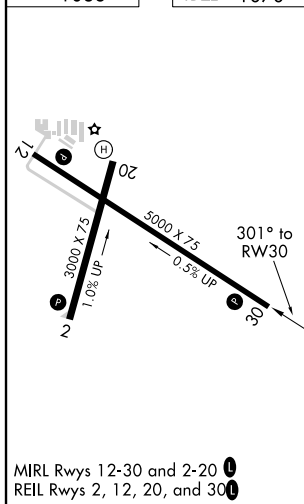
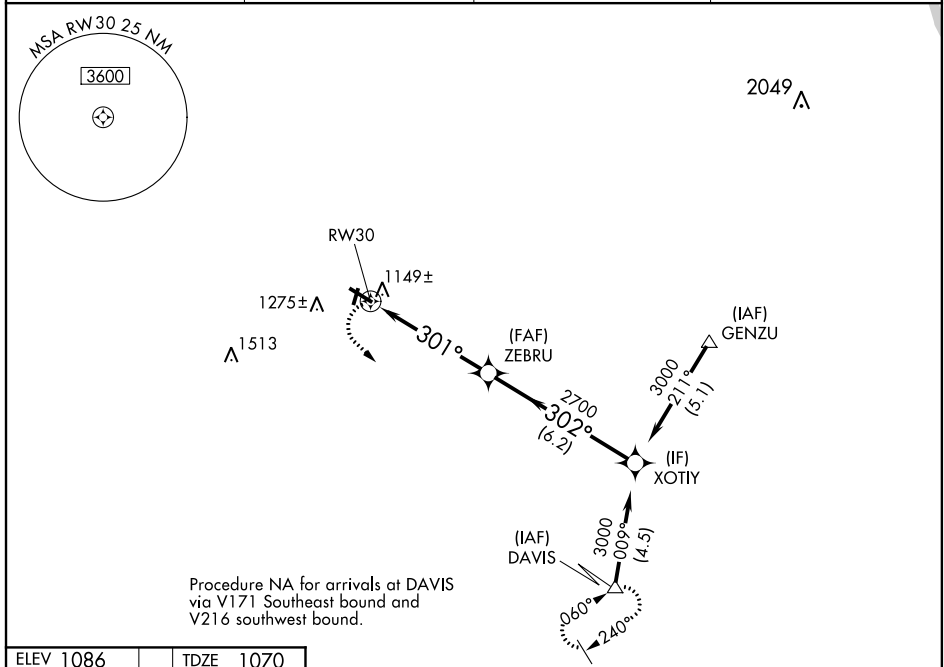


Flight Procedures Cover Page	Task Action: P-NOTAM	Task Type: IAP	Estimated Chart Date: 05/20/2021	APWS Task ID: 024ECD50EC1A4E44A7A4BC4367D3A60E	APWS Project ID: CBF2E1876F7B4E50B962C00709BB2CEB
Procedure: RNAV (GPS) RWY 30 AMDT 0B		Enroute: NO	Specialist: Roslewski, Russell		Agreement Number:
Airport ID: KEFT			Airport City: MONROE		State: WI
Facility ID:	Facility Type:	Flight Inspection Remark Type:			
<div>Procedure Comments: PNOTAM</div> <div>LNR VOR MON</div> <div>ACTIVE DATA USED.</div> <div>CIRCLING RADII INCREASE.</div> <div>CONTACT JASON KRETSCHMER, 405-954-4019</div> <div><div>Digitally signed by <b>JASON KRETSCHMER</b> Mar 25, 2021</div><div>QUALITY 16 CHECKED</div><div>QUALITY 26 CHECKED</div></div>					



APP CRS	Rwy Idg	5000
301°	TDZE	1070
	Apt Elev	1086

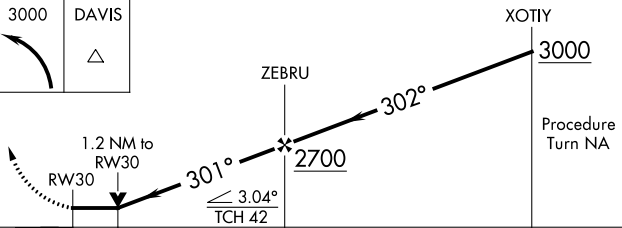
RNAV (GPS) RWY 30  
MONROE MUNI (EFT)

<div><div><div></div><div></div></div><div><div></div><div></div></div></div> <div>DME/DME RNP-0.3 NA. When local altimeter setting not received, use Albetus altimeter setting and increase all MDA 100 feet, increase LNAV Cat C/D and Circling Cat C visibility ¼ mile. VDP NA when using Albetus altimeter setting. Helicopter visibility reduction below ¾ SM NA.</div>	MISSED APPROACH: Climbing left turn to 3000 direct DAVIS and hold.		
AWOS-3 118.375	ROCKFORD APP CON 126.0 327.0	GCO 121.725	UNICOM 123.05 (CTAF) 0



4 NM

3000	DAVIS
	



3000

DAVIS

XOTIY

3000

Procedure Turn NA

ZEBRU

2700

301°

302°

1.2 NM to RW30

RW30

1.2

3.8 NM

3.04°

TCH 42°

6.2 NM

CATEGORY	A	B	C	D
LNAV MDA	1480-1	410 (400-1)	1480-1¼	410 (400-1¼)
CIRCLING	1540-1 454 (500-1)	1640-1 554 (600-1)	1640-1½ 554 (600-1½)	1640-2 554 (600-2)

