

Flight Procedures Cover Page	Task Action: ABBREVIATED AMENDMENT	Task Type: SID	Estimated Chart Date: 02/23/2023	APWS Task ID: 0205591422B242E7AF13A2DE05EECBFD	APWS Project ID: D5FBCE881B694F228BE371EDFE2AF394
Procedure: DORMR THREE (RNAV)		Enroute: YES	Specialist: Garrity, Michael		Agreement Number:
Airport ID: KTPA			Airport City: TAMPA		State: FL
Facility ID:	Facility Type:	Flight Inspection Remark Type:			
<p>Procedure Comments:</p> <p>ACTIVE DATA USED FOR KTPA AIRPORT AND RUNWAYS</p> <p>ABBREVIATED AMENDMENT</p> <p>CANCELS !FDC 2/5926</p> <p>PROCESSED IAW TECHNICAL SUPPORT GROUP (AJF-17) MEMO DATED 07/07/2021, SUBJECT: GUIDANCE FOR PROCEDURAL CHANGES REQUIRING FLIGHT INSPECTION/VALIDATION</p> <p>CONTACT: ALLAN WILL, TEAM 2 SUBTEAM-C MANAGER, 405.954.6103, OR MARLON ROBINSON, TEAM 2 MANAGER, 405.954.3636</p>					



FL TPA DORMR TWO (RNAV) DEPARTURE

5-5-22 PRB Results: [SIGNED/COMPLETE](#)

V8 - ALL CORRECTIONS COMPLETE - READY TO PROCESS FOR SIGNATURES

ALL CORRECTIONS COMPLETED. APPROVED BASED ON A NOTAM FOR CG ON RWY 10/19L: RWYS 10 (243'/800), 19L (200-1½ OR STD.

W/MIN. CLIMB OF 220'/300 [MATCH ODP]), AND RWY 19R (220'/300).

## FL TPA DORMR TWO (RNAV) DEPARTURE

5-2-2022 PRB Results: Returned for Rework

V7 IS BEING RETURNED FOR THE FOLLOWING:

1. APPROVED BASED ON A NOTAM FOR CG ON RWY 10/19L: RWYS 10 (243'/800), 19L (200-1½ OR STD. W/MIN. CLIMB OF 220'/300 [MATCH ODP]), AND RWY 19R (220'/300). Will issue applicable NOTAM on 5/19/22- Amendment to clear NOTAM and incorporate CG changes projected for 12/3/2022 chart cycle. Will not require action on RWY 19R (220'/300). Reason: The following remark that was removed in previous version contained a typo, should have referenced RWY 19L, not RWY 19R. RWY 19R remains STANDARD. This was the typo:

04/13/22: THIS IS A CORRECTED COPY OF THE FORM APPROVED ON 02/25/2022.

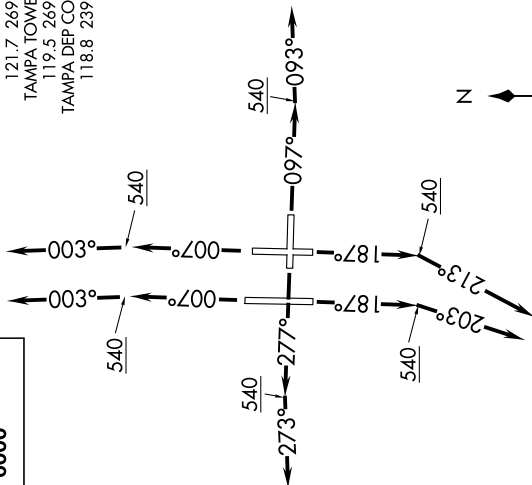
REMOVED "KTPA RWYS 10 AND 19R MINIMUM OBSTACLE CLIMB GRADIENT 243 FT/NM TO 800 AND 220 FT/NM TO 300, BUT BOTH MITIGATED BY LNAV ENGAGEMENT CLIMB GRADIENT OF 500 FT/NM TO 540" FROM REMARKS.

2. INCLUDE THE NEW MAPS FOR THE CHANGES TO THE CG'S. Updated Maps Included.

ALL OTHER CORRECTIONS COMPLETED.

*Digitally signed by*  
**DONALD H LANIER**  
May 03, 2022

D-ATIS DEP	128.475
CINC DEL	133.6
CPDLC	
GND CON	121.7 269.4
TAMPA TOWER	119.5 269.4
TAMPA DEP CON	118.8 239.3



Z

NOTE: Jets only.

RNAV 1 - GPS.

RADAR required.

**TOP ALTITUDE:**

6000

## DEPARTURE ROUTE DESCRIPTION

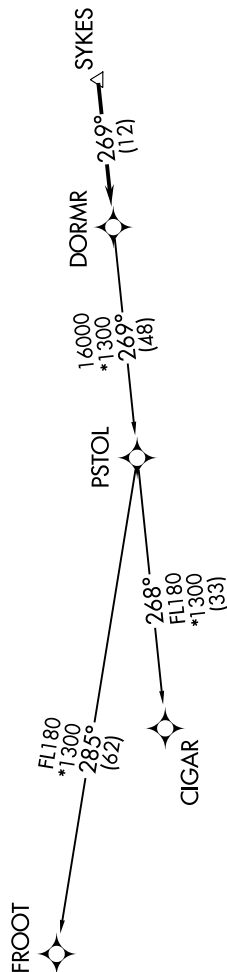
TAKEOFF RUNWAYS 1L/R: Climb on heading 007° to 540, then on heading 003° or as assigned by ATC, for vectors to SYKES, thence. . . . .  
TAKEOFF RUNWAY 10: Climb on heading 097° to 540, then on heading 093° or as assigned by ATC, for vectors to SYKES, thence. . . . .  
TAKEOFF RUNWAY 19L: Climb on heading 187° to 540, then on heading 213° or as assigned by ATC, for vectors to SYKES, thence. . . . .  
TAKEOFF RUNWAY 19R: Climb on heading 187° to 540, then on heading 203° or as assigned by ATC, for vectors to SYKES, thence. . . . .  
TAKEOFF RUNWAY 28: Climb on heading 277° to 540, then on heading 273° or as assigned by ATC, for vectors to SYKES, thence. . . . .

...on track 269° to DORMR, then on assigned transition. Maintain 6000, expect filed altitude within 10 minutes after departure.

**CIGAR TRANSITION (DORM2.CIGAR)**  
**FROOT TRANSITION (DORM2.FROOT)**

## TAKEOFF MINIMUMS

Rwys 1L/R, 10, 19R, 28: Standard.  
Rwy 19L: Standard with minimum climb of 220' per NM to 300.



NOTE: Chart not to scale.

SE-3, 08 SEP 2022 to 06 OCT 2022

(DORMR2.DORMR) 19MAY22

TAMPA, FLORIDA  
TAMPA INTL (TPA)

## 1. FLIGHT PROCEDURE IDENTIFICATION:

Tampa, FL (KTPA) DORMR (RNAV) SID

## 2. WAIVER REQUIRED AND APPLICABLE STANDARD:

Waiver required to not chart IF altitude at the IF for radar vectors (RV). Order 8260.46H, Appendix E, Section 1, para 12.C. "Document the minimum crossing altitude at the IF on RNAV Radar departure procedures as follows: CHART: MINIMUM CROSSING ALTITUDE AT (RNAV IF)-(Altitude)."

## 3. REASON FOR WAIVER (JUSTIFICATION FOR NONSTANDARD TREATMENT):

Adding unnecessary altitudes at the "IF" on procedures when they are not needed creates unnecessary workload based on the type of climb clearance that is issued. If the altitude restriction at the "IF" is to be adhered to for aircraft departing from the south runways, then after the aircraft is airborne ATC must issue "CLIMB VIA SID EXCEPT MAINTAIN (altitude)". With this procedure, it is unnecessary to add an altitude restriction at SYKES as the aircraft will be issued an initial departure clearance containing "MAINTAIN 6000" and will be receiving radar vectors to the waypoint SYKES to join the procedure. When aircraft depart, they will be climbing to 6000 and ATC must ensure they are at or above the Minimum Vectoring Altitudes (MVA), therefore the aircraft is always operating in airspace at an altitude above any terrain obstacles.

Adding an unnecessary altitude at SYKES creates workload for pilots as it could create a climb gradient higher than 200 feet per NM depending on where ATC vectors the aircraft before clearing them to SYKES and it could increase communication between ATC and pilots who will be asking questions about the altitude restriction, which ties up the radios. It also adds pilot workload once airborne when ATC issues an altitude higher than 6000 by stating "CLIMB and MAINTAIN (altitude)". The use of "CLIMB and MAINTAIN (altitude)" deletes any published altitude restrictions, therefore pilots will be heads down deleting the restriction from the FMC.

AFS has approved other procedures within the NAS provided an evaluation has been completed. In this case, the evaluation has been accomplished and is contained under number 4 below.

## 4. EQUIVALENT LEVEL OF SAFETY PROVIDED:

With a standard climb gradient of 200 FT/NM all surfaces are clear to IF (SYKES) which is 32.37 NM from the closest DER. The departure route description for KTPA runways 01L/R, 10, 19L/R and 28 will provide instruction for the aircraft to conduct an uninterrupted climb to 6,000 which is above the MVA from the airport to the IF.

ATC will ensure aircraft departing KTPA runways 01L/R, 10, 19L/R and 28 cross the IF at or above 3000 ft. MSL and within the confines of the Class B airspace. This requirement is included in the facility Standard Operating Procedures (SOP).

5. An OCS with a starting elevation of 700 ft. (1700 MVA-1000 ROC) was evaluated for the route starting at DORMR and the surface was clear.

**6. ALTERNATIVE ACTIONS DEEMED NOT FEASIBLE:**

Modifying all runway SIDs to replace the radar vectors segment with RNAV OTG would be incompatible with procedure efficiency in a constrained airspace and cause environmental issues and delays.

**7. COORDINATION WITH USER ORGANIZATIONS (SPECIFY):**

Eastern Service Area PBN FAA and NATCA leads.  
ZJX ARTCC.  
ZMA ARTCC.  
TAMPA TRACON.  
TAMPA ATCT.  
American Airlines and Southwest Airlines.

**8. SUBMITTED BY:**

**DATE:**

**9. AFS ACTIONS:**

☐ APPROVED ☐ DISAPPROVED ☐ NOT REQUIRED

**COMMENTS:**

**SIGNATURE**

VICKI LYNN  
TURNER

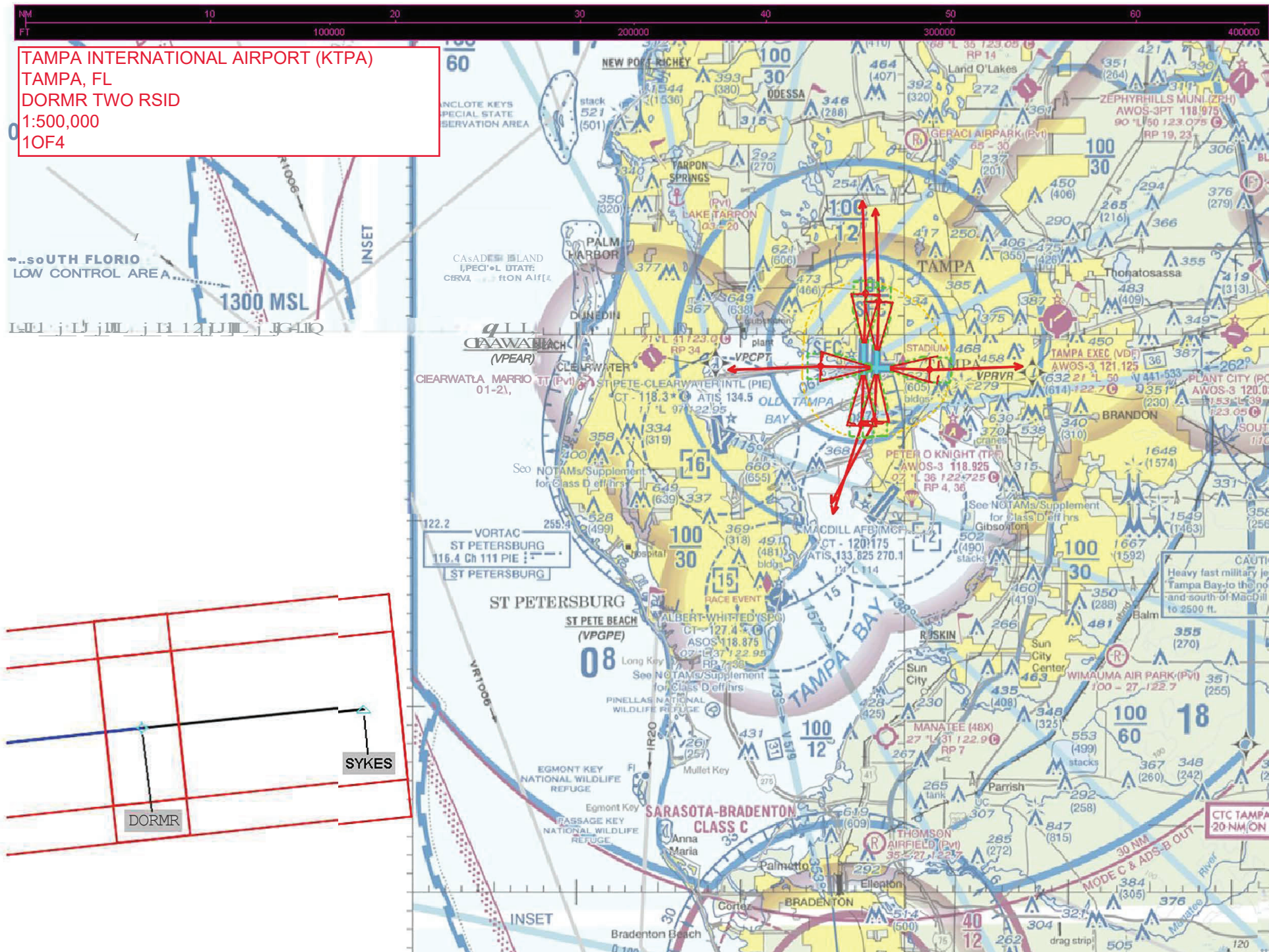
Digitally signed by VICKI  
LYNN TURNER  
Date: 2022.03.31  
17:47:23 -04'00'

**DATE**

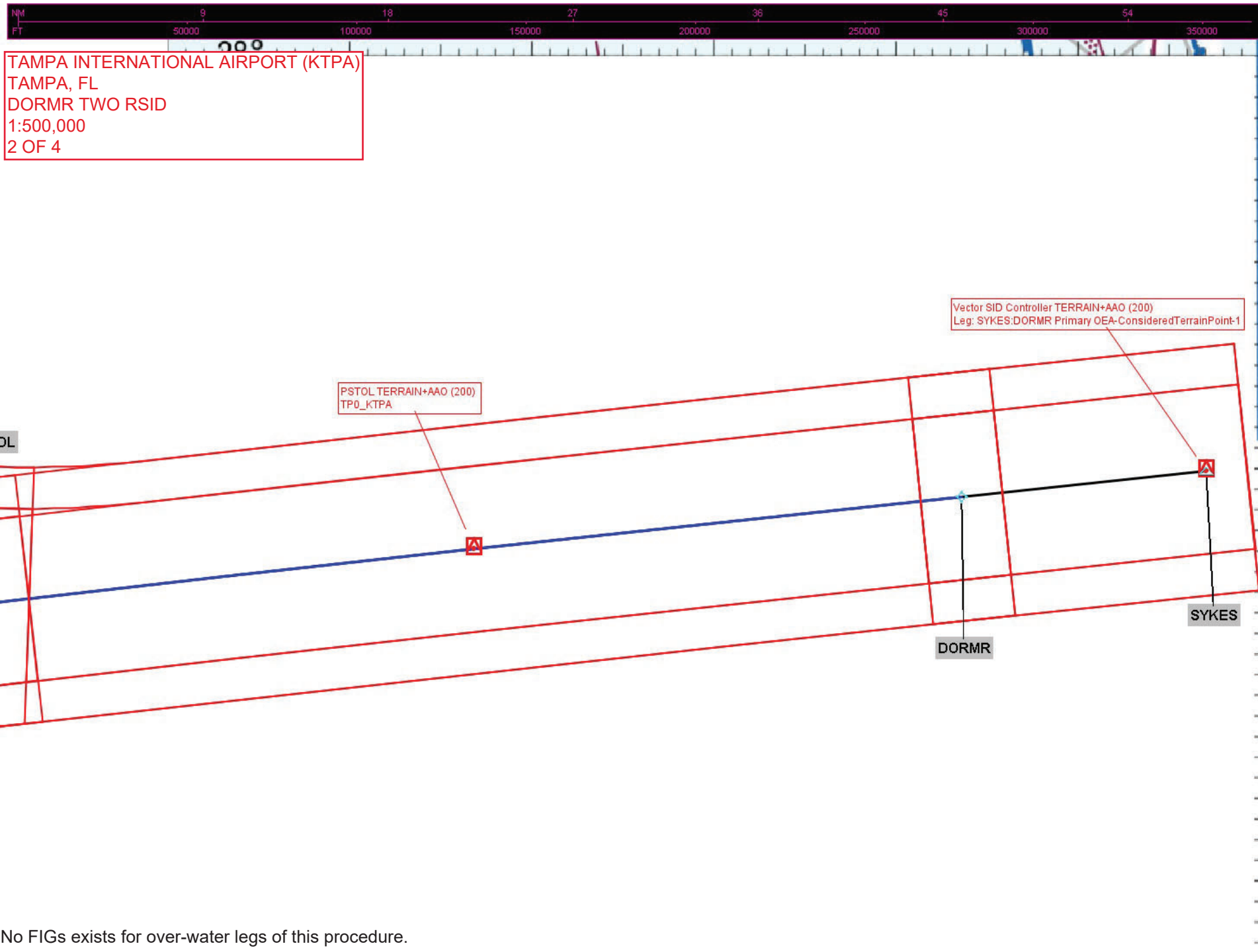
**ROUTING SYMBOL**

**SIGNATURE**





Note: No FIGs exists for over-water legs of this procedure.

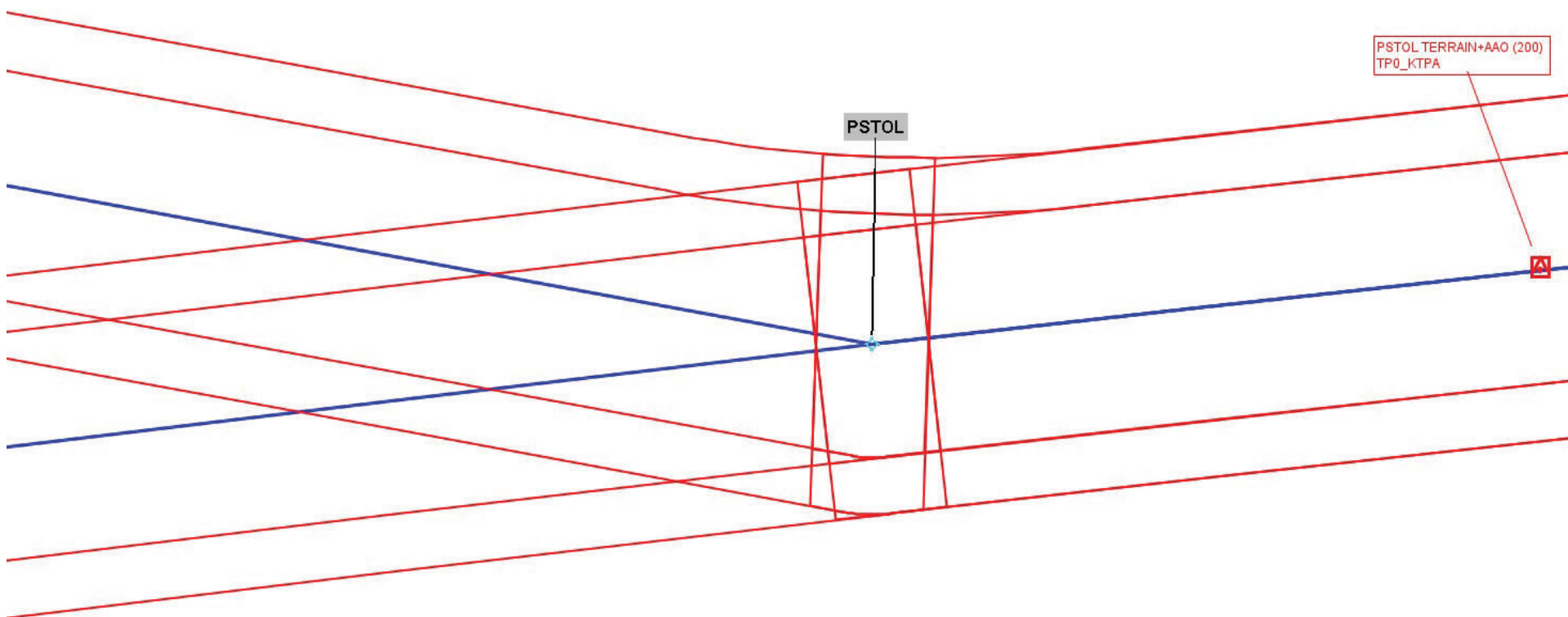


Note: No FIGs exists for over-water legs of this procedure.





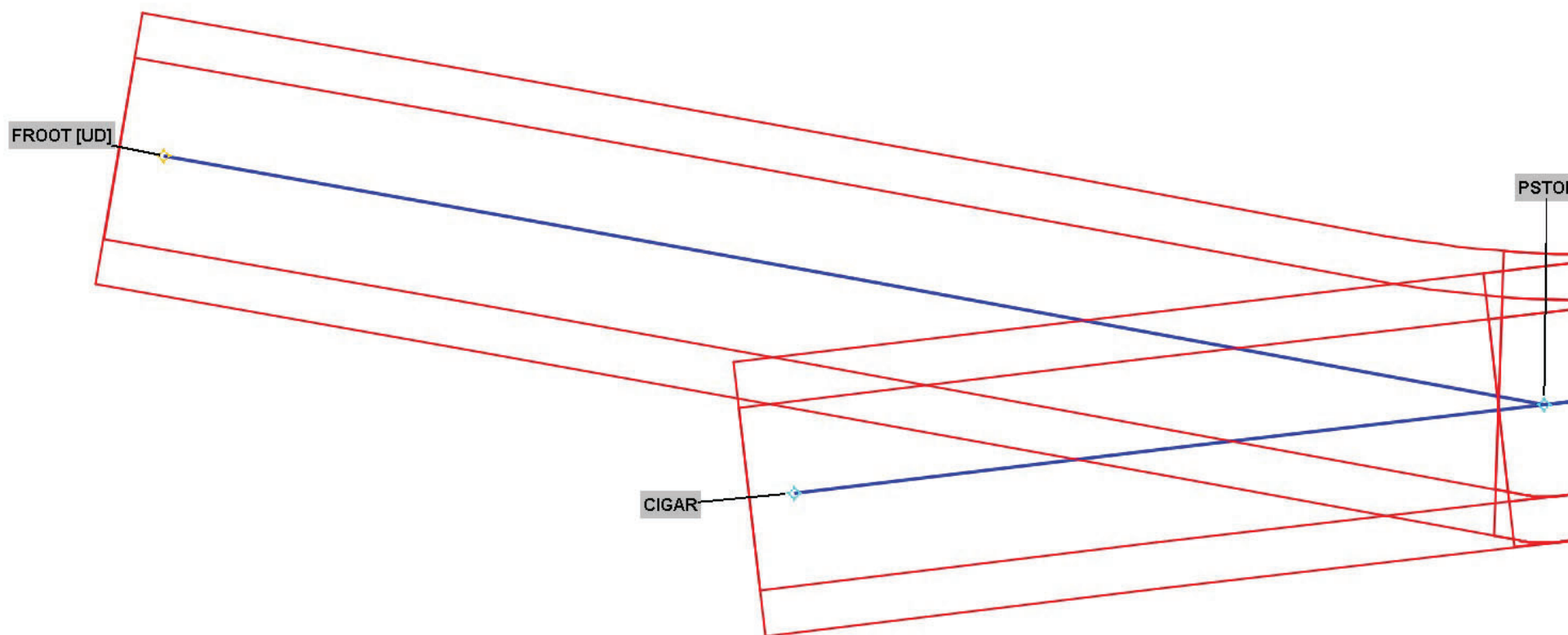
TAMPA INTERNATIONAL AIRPORT (KTPA)  
TAMPA, FL  
DORMR TWO RSID  
1:500,000  
3 OF 4



Note: No FIGs exists for over-water legs of this procedure.



TAMPA INTERNATIONAL AIRPORT (KTPA)  
TAMPA, FL  
DORMR TWO RSID  
1:500,000  
4 OF 4

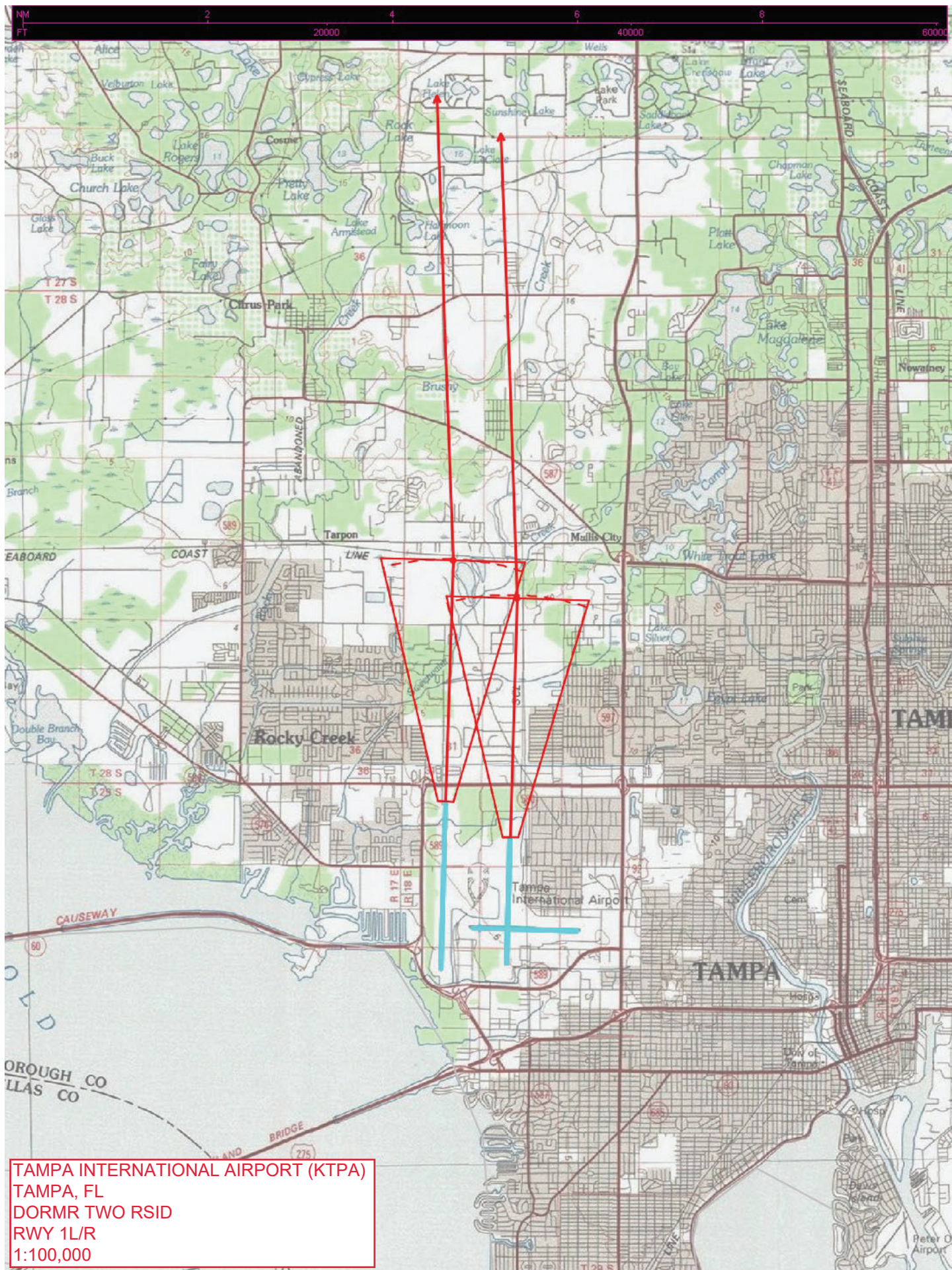


Note: No FIGs exists for over-water legs of this procedure.









TAMPA INTERNATIONAL AIRPORT (KTPA)  
TAMPA, FL  
DORMR TWO RSID  
RWY 1L/R  
1:100,000



TAMPA INTERNATIONAL AIRPORT (KTPA)  
TAMPA, FL  
DORMR TWO RSID  
RWY 19L/R  
1:500,000





TAMPA INTERNATIONAL AIRPORT (KTPA)  
TAMPA, FL  
DORMR TWO RSID  
RWY 19L/R  
1:100,000

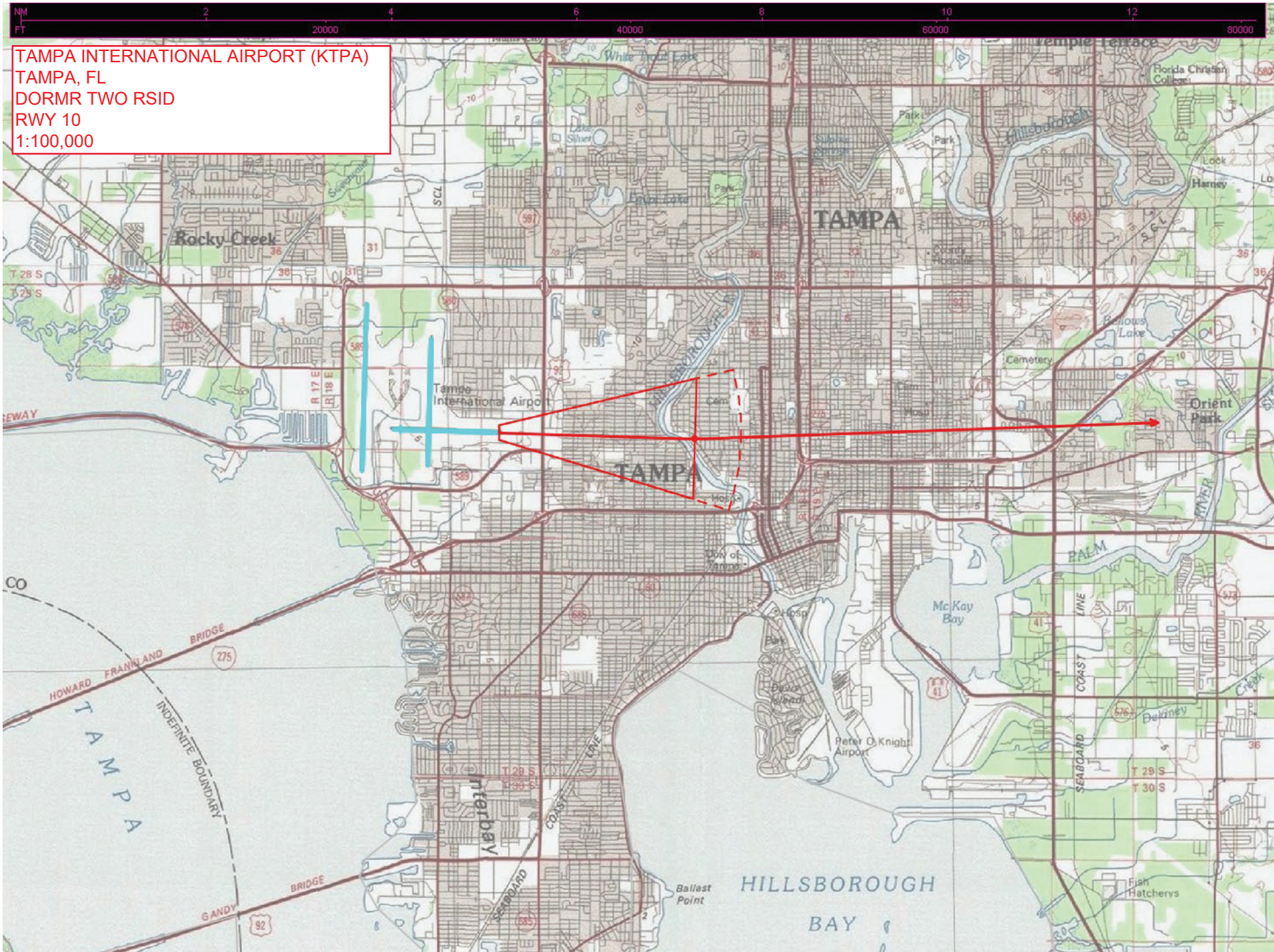


TAMPA INTERNATIONAL AIRPORT (KTPA)  
TAMPA, FL  
DORMR TWO RSID  
RWY 10  
1:500.000



CTC TAMPA APP WITHIN  
20 NM ON 119.65, 353.575











TAMPA INTERNATIONAL AIRPORT (KTPA)  
TAMPA, FL  
DORMR TWO RSID  
RWY 28  
1:100,000

