


<b>Flight Procedure Tracking Form</b>		<b>Action:</b> AMENDMENT	<b>Task Type:</b> IAP	<b>Date Open:</b> 11/18/2019	<b>Task #:</b> 2019092632295101005	<b>Request #:</b> 20190926322951
<b>Procedure:</b> RNAV (GPS) RWY 21 AMDT 2B			<b>Airport ID:</b> KATW	<b>Airport:</b> APPLETON INTL		<b>Reimbursable #:</b> NO
<b>City:</b> APPLETON	<b>ST:</b> WI	<b>GPS #:</b>	<b>Estimated Chart Date:</b> 03/26/2020		<b>FICO #:</b>	
<b>Fac ID:</b> N/A		<b>Fac. Type:</b>		<b>Specialist:</b> CHRIS MCCARTHY		
<b>Procedure Review</b>						
	<b>Rec'd</b>	<b>Rel'd</b>	<b>Full Name</b>	<b>Comments</b>		
<b>Lead:</b>	09/26/2019			 Digitally signed by <b>JON DENTON</b> Feb-07, 2020		
<b>QA:</b>						
<b>Liaison:</b>						
<b>Procedure Comments:</b>			ENROUTE-NON	<b>Remark Type:</b> INFORMATION		
P-NOTAM NEW CIRCLING AREAS PROCESSED IAW AIRCRAFT OPERATIONS GROUP (AJW-33) MEMO, OCTOBER 3, 2018, SUBJECT: FLIGHT INSPECTION REVIEW NOT REQUIRED. DAVE DANNER, 405-954-5077						

QUALITY  
15  
CHECKED

WAAS CH <b>93517</b> <b>W21A</b>	APP CRS <b>208°</b>	Rwy Idg TDZE <b>879</b> Apt Elev <b>918</b>	<b>8002</b>
--	------------------------	---	-------------

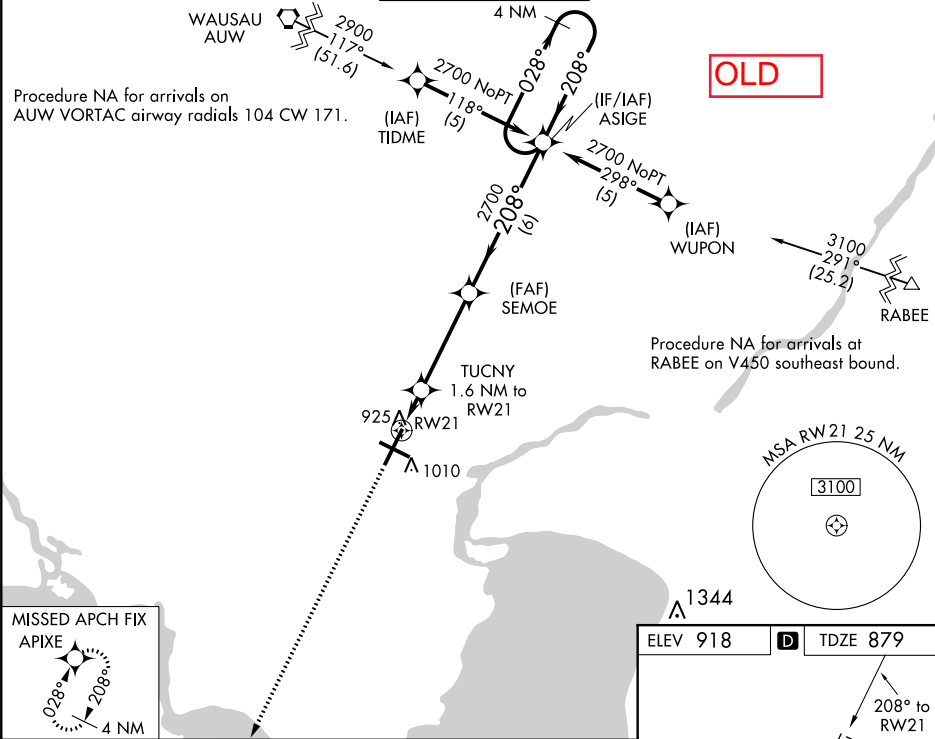
RNAV (GPS) RWY 21

APPLETON INTL (ATW)

⚠ Baro-VNAV NA when using Green Bay-Austin Straubel Intl altimeter setting. For uncompensated Baro-VNAV systems, LNAV/VNAV NA below -16°C (4°F) or above 47°C (116°F). DME/DME RNP-0.3 NA. Visibility reduction by helicopters NA. When local altimeter setting not received, use Green Bay-Austin Straubel Intl altimeter setting and increase all DA 81 feet and all MDA 100 feet. Increase LPV and LNAV/VNAV all Cats and LNAV Cat C/D visibility ¼ mile.

MISSED APPROACH: Climb to 2900 direct APIXE and hold.

ATIS <b>127.15</b>	GREEN BAY APP CON★ <b>126.3 338.2</b>	APPLETON TOWER★ <b>119.6(CTAF) 0</b>	GND CON <b>121.7</b>	UNICOM <b>122.95</b>
-----------------------	--	---	-------------------------	-------------------------



2900

APIXE

VGSI and RNAV glidepath not coincident

(VGSI Angle 3.00/TCH 47).

4 NM

Holding Pattern

\*LNAV only.

TUCNY

1.6 NM to RW21

SEMOE

ASIGE

2700

208°

028°

GP 3.00°

TCH 50

RW21

1.6

3.9 NM

6 NM

\*1440

CATEGORY	A		B		C		D	
LPV DA			1129-1		250 (300-1)			
LNAV/VNAV DA			1246-1¼		367(400-1)			
LNAV MDA	1280-1		401(400-1)		1280-1¼		401 (400-1¼)	
CIRCLING	1340-1		1380-1		1380-1½		1480-2	
	422 (500-1)		462 (500-1)		462 (500-1½)		562 (600-2)	

