

Flight Procedures Cover Page	Task Action: Abbreviated Amendment	Task Type: IAP	Estimated Chart Date: 08/10/2023	APWS Task ID: 01C711E4388E46D7A5E2866172025502	APWS Project ID: F4588D793E0D41B8A25CC67C011369A7
Procedure: RNAV (GPS) RWY 28 AMDT 2A		Enroute: NO	Specialist: Tuttle, Judith		Agreement Number:
Airport ID: KXSA			Airport City: TAPPAHANNOCK		State: VA
Facility ID:	Facility Type:	Flight Inspection Remark Type:			
<div>Procedure Comments: PROCESSED IAW TECHNICAL SUPPORT GROUP (AJF-17) MEMO DATED 07/07/2021, SUBJECT: GUIDANCE FOR PROCEDURAL CHANGES REQUIRING FLIGHT INSPECTION/VALIDATION. ACTIVE DATA USED FOR KXSA. REMOVED NOTES REFERENCING V213, V16-20-157 DUE TO PXT VORMON. CONTACT: ERIC SUSKI, 405.954.7331.</div> <div><div>QUALITY 41 CHECKED</div><div>QUALITY 35 CHECKED</div></div>					

OLD

TAPPAHANNOCK, VIRGINIA

AL-10331 (FAA)

22027

WAAS CH 99409 W28A	APP CRS 277°	Rwy Idg TDZE Apt Elev	4300 129 135
--	------------------------	-----------------------------	---

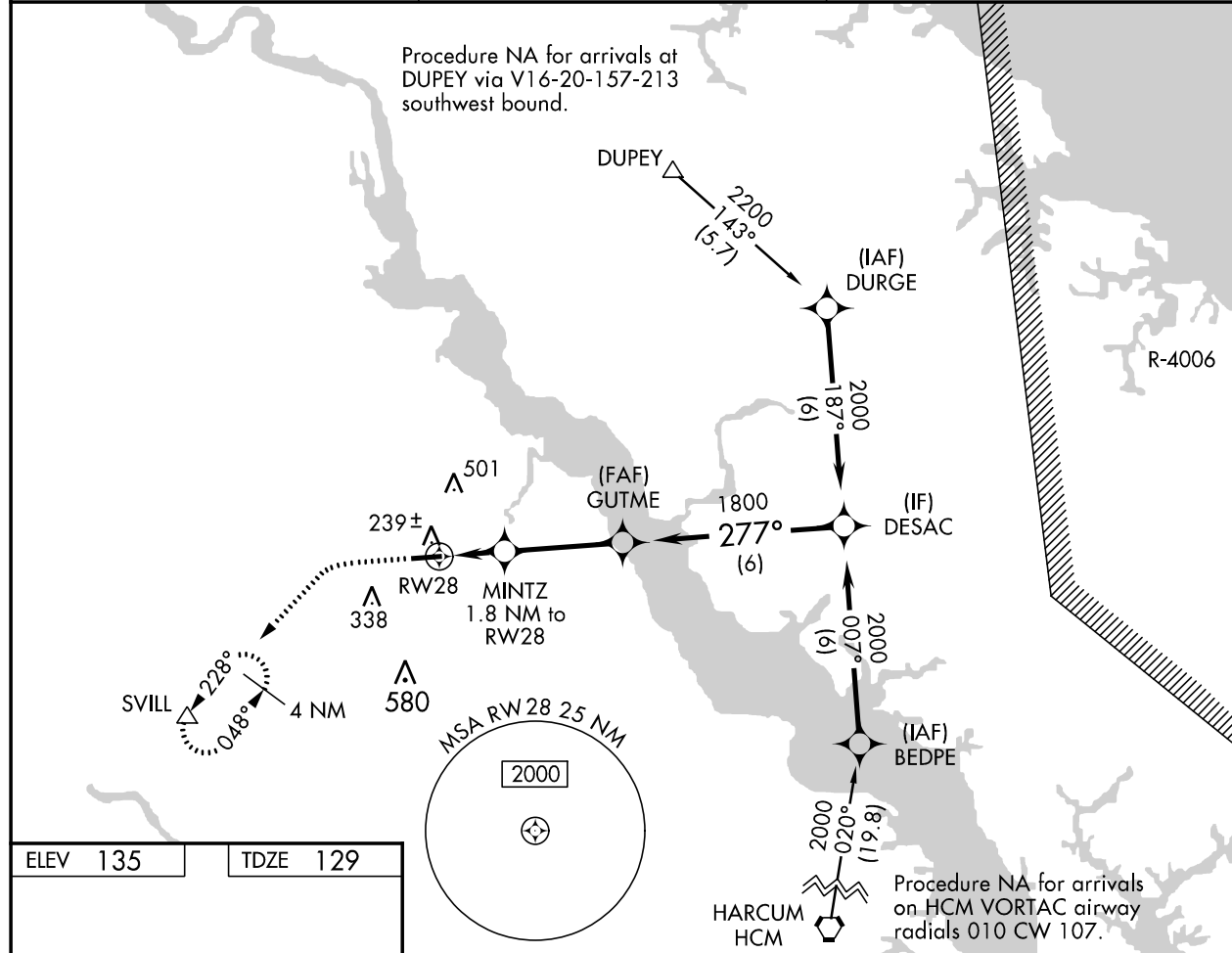
RNAV (GPS) RWY 28

TAPPAHANNOCK/ESSEX COUNTY (XSA)

T For uncompensated Baro-VNAV systems, LNAV/VNAV NA below -15°C (5°F) or above 54°C (130°F). DME/DME RNP-0.3 NA.

MISSED APPROACH: Climb to 600 then climbing left turn to 2000 direct SVILL and hold.

AWOS-3 125.775	POTOMAC APP CON 126.4 282.375	UNICOM 122.8 (CTAF) 1
--------------------------	---	---------------------------------



REIL Rwys 10 and 28
MIRL Rwy 10-28 **L**

600

2000

SVILL

*LNAV only.

MINTZ
1.8 NM to
RW28

*1 NM to
RW28

RW28

1 NM

0.8 NM

3.3 NM

6 NM

GUTME
1800

DESAC

277°

2000

740*

1800

GP 3.00°
TCH 40

CATEGORY	A		B	C	D
LPV DA	379-1	250 (300-1)		NA	
LNAV/VNAV DA	402-1	273 (300-1)		NA	
LNAV MDA	500-1	371 (400-1)		NA	
C CIRCLING	580-1 445 (500-1)	640-1 505 (600-1)	820-2 685 (700-2)		NA

TAPPAHANNOCK, VIRGINIA
Amdt 2 25MAY17

37°52'N-76°54'W

TAPPAHANNOCK/ESSEX COUNTY (XSA)
RNAV (GPS) RWY 28

NE-3, 06 OCT 2022 to 03 NOV 2022

NE-3, 06 OCT 2022 to 03 NOV 2022