

Flight Procedures Cover Page	Task Action: P-NOTAM	Task Type: IAP	Estimated Chart Date: 12/31/2020	APWS Task ID: 0148AAB3751146AAD1B2C1E287F2FFB	APWS Project ID: 1266976163F841C59913B199F98F8566
Procedure: RNAV (GPS) RWY 5 AMDT 1C		Enroute: NO	Specialist: Gracey, Dean		Agreement Number:
Airport ID: KWVL	Airport Name: WATERVILLE ROBERT LAFLEUR		Airport City: WATERVILLE		State: ME
Facility ID:	Facility Type:	Flight Inspection Remark Type:			
<div>Procedure Comments: PROCESSED IAW AIRCRAFT OPERATIONS GROUP (AJF-10) MEMO, APRIL 29, 2020 SUBJECT: FLIGHT INSPECTION REVIEW NOT REQUIRED.</div> <div>ACTIVE AIRPORT DATA USED.</div> <div>DELETE PLANVIEW NOTE: PROCEDURE NA FOR ARRIVALS AT ANSYN ON V104 EASTBOUND.</div> <div>CONTACT ALLAN WILL AJV-A423 (405) 954-6103.</div> <div>SN 8/26/20</div> <div>QUALITY 6 CHECKED</div> <div>QUALITY 15 CHECKED</div>					

WAAS CH 70418 W05A	APP CRS 047°	Rwy Idg TDZE Apt Elev	5500 309 333
--	------------------------	-----------------------------	---

RNAV (GPS) RWY 5

WATERVILLE ROBERT LAFLEUR (WVL)

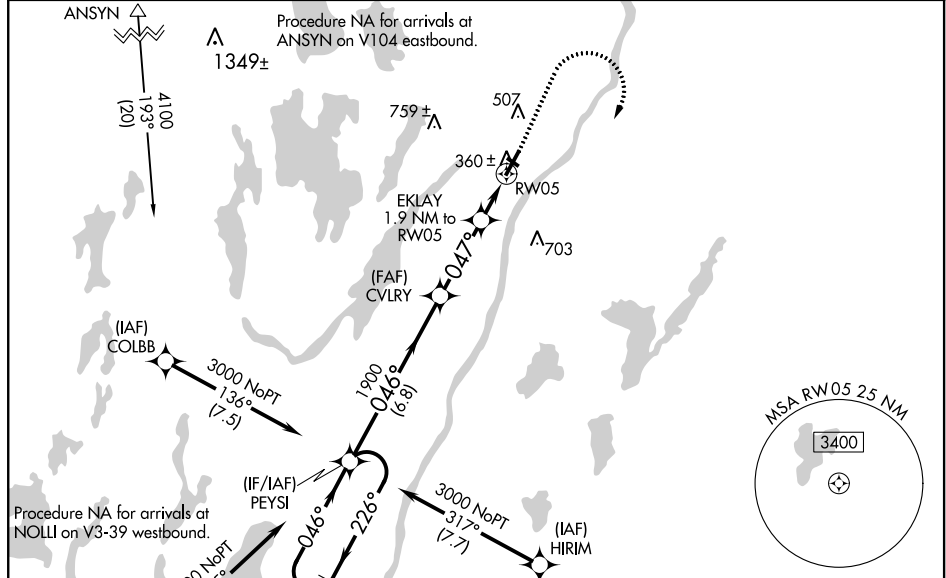
⚠ Inop table does not apply to LPV. For uncompensated Baro-VNAV systems, LNAV/VNAV NA below -1.5°C (5°F) or above 54°C (130°F). DME/DME RNP-0.3 NA. Helicopter visibility reduction below 3/4 SM NA. Baro-VNAV and VDP NA when using Augusta altimeter setting. When local altimeter setting not received, use Augusta altimeter setting and increase all DA 35 feet and all MDA 40 feet, increase visibility LNAV/VNAV all Cats 3/4 mile. Night Landing: Rwy 14 NA. For inop MALSF, increase LNAV/VNAV Cat D visibility to 1 mile and LNAV Cats C/D visibility to 3/4 mile. For inop MALSF, when using Augusta altimeter setting, increase LPV all Cats visibility to 3/4 mile, LNAV/VNAV Cat D visibility to 1 1/4 mile, and LNAV Cat D visibility to 1 mile.

MALSF

⚠ =

MISSED APPROACH:
Climb to 1000 then climbing right turn to 3000 direct PEYSI and hold.

AWOS-3PT 118.375	PORTLAND APP CON ★ 128.35 299.2	CLNC DEL 124.6 299.2	UNICOM 122.7 (CTAF) 0
----------------------------	---	--------------------------------	---------------------------------



ELEV 333	TDZE 309
----------	----------

4 NM Holding Pattern

PEYSI

3000 ← 226° → 046° → 046° → 1900

GP 3.00° TCH 48

CVLRY

EKLAY 1.9 NM to RW05

*0.9 NM to RW05

RW05

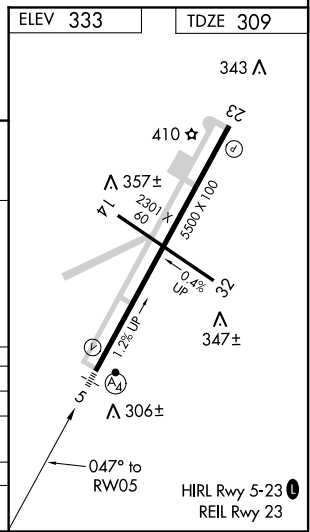
*920

6.8 NM 3.1 NM 1 NM 0.9 NM

1000 3000 PEYSI

*LNAV only.

CATEGORY	A	B	C	D
LPV DA		509-3/4	200 (200-3/4)	
LNAV/VNAV DA		588-3/4	279 (300-3/4)	
LNAV MDA		620-3/4	311 (400-3/4)	
CIRCLING	860-1	527 (600-1)	860-1 1/2 527 (600-1 1/2)	900-2 567 (600-2)



NE-1, 16 JUL 2020 to 13 AUG 2020

NE-1, 16 JUL 2020 to 13 AUG 2020