

Flight Procedures Cover Page	Task Action: P-NOTAM	Task Type: IAP	Estimated Chart Date: 06/17/2021	APWS Task ID: 011B9F4EC8394F92BD9FF727C4E8C98B	APWS Project ID: 14CB659F3732406FB7134DBC0AC3D77E
Procedure: RNAV (GPS) RWY 6 AMDT 0B		Enroute: NO	Specialist: Dougherty, Steven		Agreement Number:
Airport ID: KLOZ			Airport City: LONDON		State: KY
Facility ID:	Facility Type:	Flight Inspection Remark Type:			
<div>Procedure Comments: P-NOTAM.</div> <div>CIRCLING RADII INCREASE.</div> <div>ACTIVE DATA USED.</div> <div>CONTACT JASON KRETSCHMER, AJV-A421, 405-954-5077.</div> <div><div>Digitally signed by JASON KRETSCHMER Mar 30, 2021</div><div><div>QUALITY 20 CHECKED</div><div>QUALITY 38 CHECKED</div></div></div>					

OLD

LONDON, KENTUCKY

AL-720 (FAA)

20142

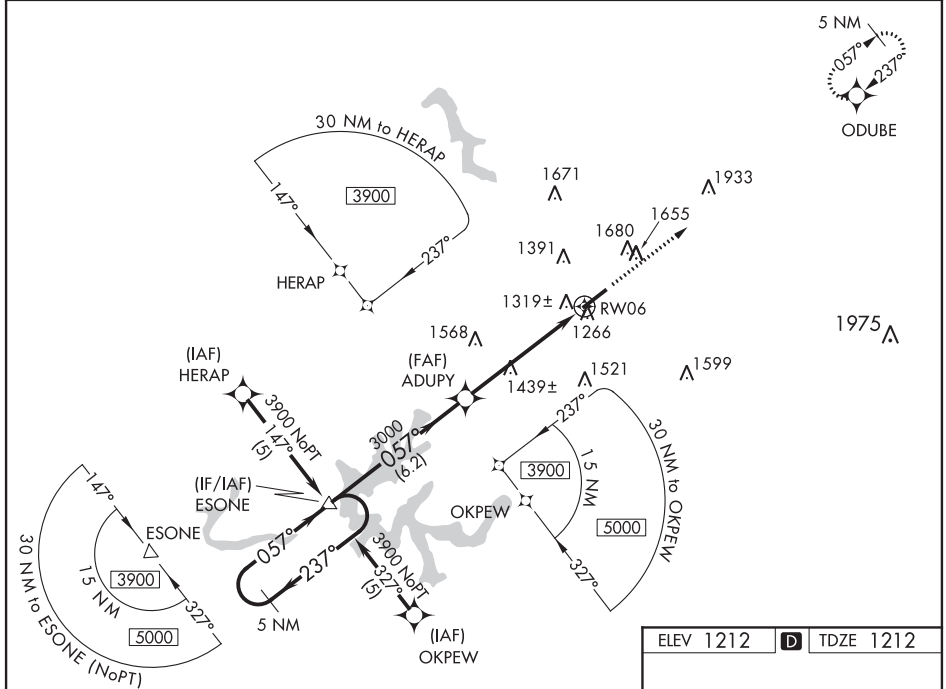
WAAS CH 65799 W06A	APP CRS 057°	Rwy Idg TDZE Apt Elev	5000 1212 1212
--	------------------------	-----------------------------	---

RNAV (GPS) RWY 6

LONDON-CORBIN AIRPORT-MAGEE FIELD (LOZ)

<p>▽ DME/DME RNP-0.3 NA. Visibility reduction by helicopters NA. When local altimeter setting not received, use Somerset altimeter setting and increase all DAs/MDAs 100 feet and increase visibility LPV ¼ mile all Cats, LNAV/VNAV ½ mile all Cats, LNAV Cat C ¼ mile and Cat D ½ mile, and Circling Cat C/D ¼ mile. For uncompensated Baro-VNAV systems, LNAV/VNAV NA below -17° C (2° F) or above 46° C (116° F) Baro-VNAV and VDP NA when using Somerset altimeter setting.</p>	<p>▲ MISSED APPROACH: Climb to 3900 direct ODUBE and hold.</p>
---	---

ASOS 119.075	INDIANAPOLIS CENTER 124.625 371.925	UNICOM 123.0 (CTAF) 0
------------------------	---	---------------------------------



<p>5 NM Holding Pattern ESONE</p> <p>3900 ← 237°</p> <p>GP 3.00° TCH 49</p>		<p>ADUPY</p> <p>3900 ODUBE</p>	
<p>6.2 NM</p>		<p>5.4 NM</p>	
CATEGORY	A	B	C
LPV DA	1466-1	254 (300-1)	
LNAV/VNAV DA	1602-1¼	390 (400-1¼)	
LNAV MDA	1720-1 508 (600-1)	1720-1½ 508 (600-1½)	
CIRCLING	1780-1 568 (600-1)	2040-2½ 828 (900-2½)	2040-2¾ 828 (900-2¾)

LONDON, KENTUCKY

Orig-A 26AUG10

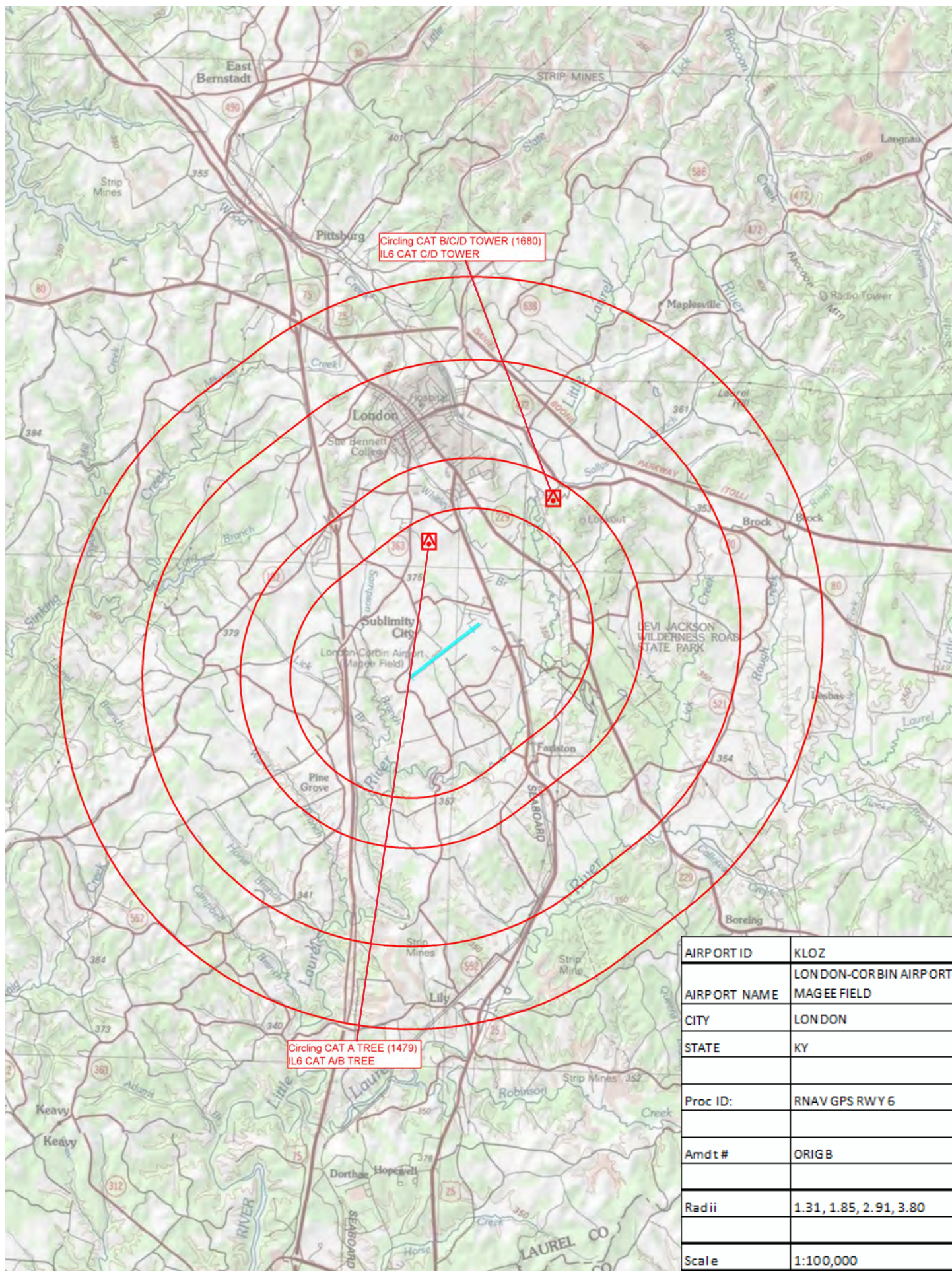
LONDON-CORBIN AIRPORT-MAGEE FIELD (LOZ)

37°05'N-84°05'W

RNAV (GPS) RWY 6

SE-1, 05 NOV 2020 to 03 DEC 2020

SE-1, 05 NOV 2020 to 03 DEC 2020



AIRPORT ID	KLOZ
AIRPORT NAME	LONDON-CORBIN AIRPORT- MAGEE FIELD
CITY	LONDON
STATE	KY
Proc ID:	RNAV GPS RWY 6
Amdt#	ORIG B
Radii	1.31, 1.85, 2.91, 3.80
Scale	1:100,000