

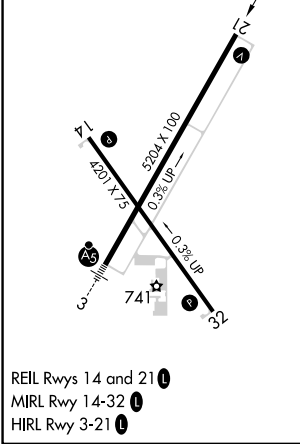
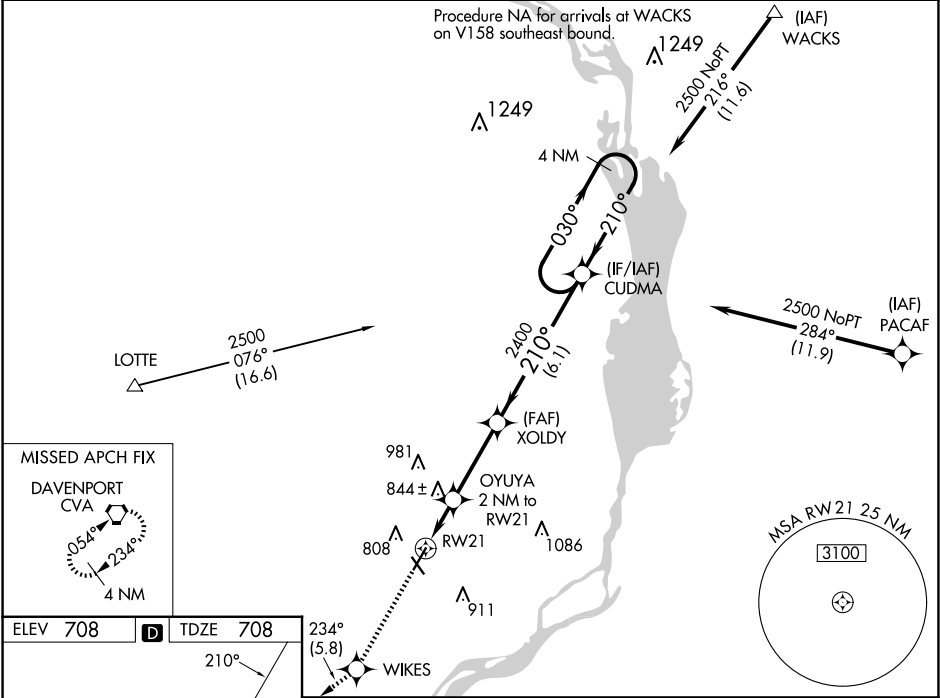
Flight Procedures Cover Page	Task Action: FLIGHT CHECK	Task Type: IAP	Estimated Chart Date: 10/02/2025	APWS Task ID: F410CAE84B74405C9E719816D1799C53	APWS Project ID: D7532AC2C9F540A9ABFB66054A6F98D4
Procedure: RNAV (GPS) RWY 21 AMDT 1C		Enroute: NO	Specialist: Dunn, Timothy		Agreement Number:
Airport ID: KCWI			Airport City: CLINTON		State: IA
Facility ID:	Facility Type:	Flight Inspection Remark Type: New FC Slot			
<div>Procedure Comments: Contact Kyle Thompson 405-954-2135</div> <div>QUALITY 6 CHECKED SN 6/10/25</div> <div>QUALITY 9 CHECKED BEGUE</div>					

WAAS CH 86829 W21A	APP CRS 210°	Rwy Idg TDZE Apt Elev	5204 708 708
--	------------------------	-----------------------------	---

RNAV (GPS) RWY 21
CLINTON MUNI (CWI)

<p>⚠ Rwy 21 helicopter visibility reduction below ¾ SM NA. Baro-VNAV NA when using Davenport altimeter setting. For uncompensated Baro-VNAV systems, LNAV/VNAV NA below -16°C (4°F) or above 54°C (130°F). DME/DME RNP-0.3 NA. When local altimeter setting not received, use Davenport altimeter setting: increase all DA 47 feet and all MDA 60 feet. Increase LNAV Cat C visibility ¼ mile.</p>	<p>MISSED APPROACH: Climb to 3000 direct WIKES and on track 234° to CVA VORTAC and hold.</p>
---	---

AWOS-3PT 125.525	QUAD CITY APP CON ★ 125.95 257.8	CLNC DEL 118.5 0	CTAF 122.9
----------------------------	--	----------------------------	----------------------

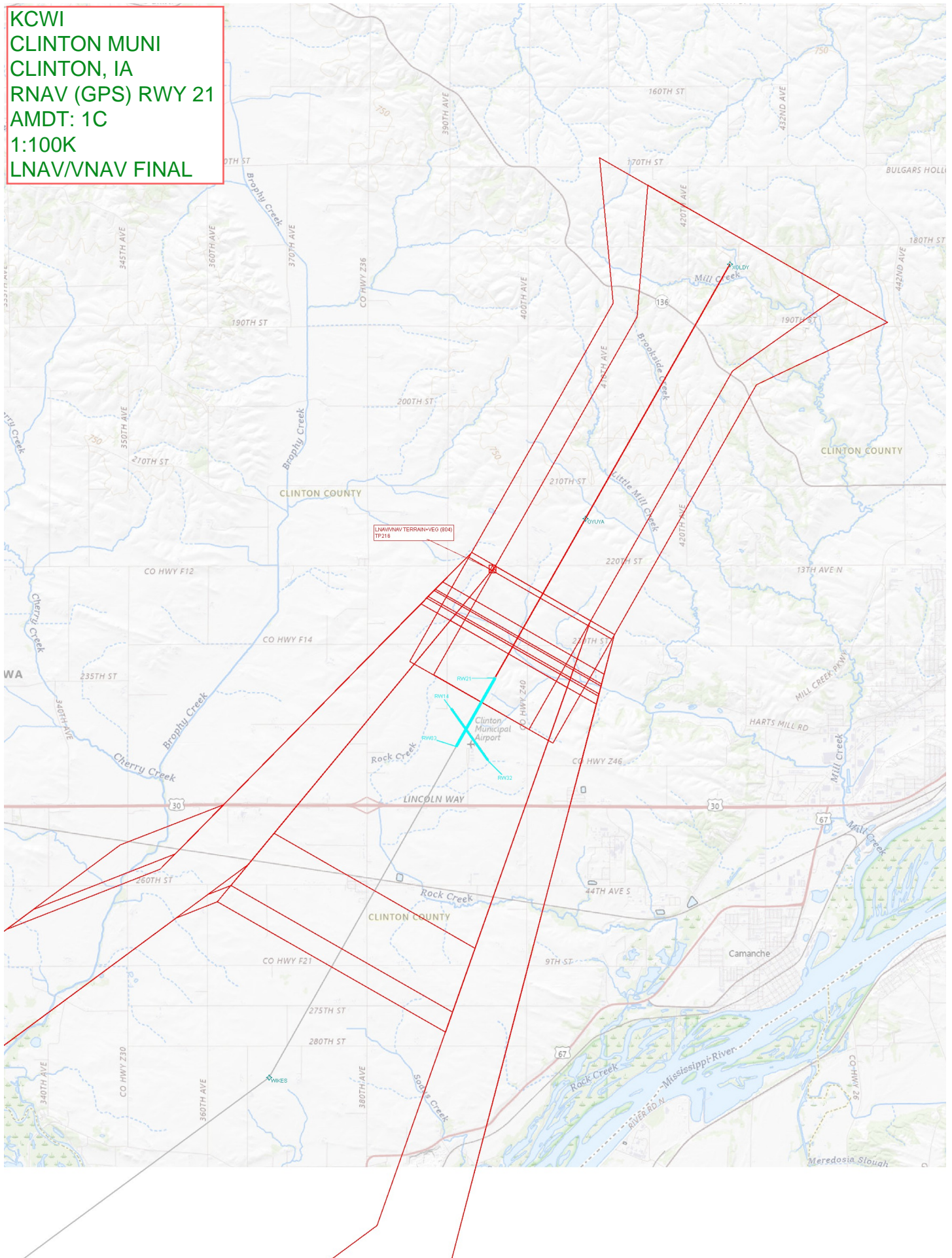


3000	WIKES	tr 234°	CVA	VGSI and RNAV glidepath not coincident (VGSI Angle 3.00°/TCH 34).
*LNAV only	OYUYA 2 NM to RW21	XOLDY	CUDMA	4 NM Holding Pattern
RW21	1380*	2400	2500	GP 3.00° TCH 40
2 NM	3.2 NM	6.1 NM		
CATEGORY	A	B	C	D
LPV DA	958-1	250 (300-1)		NA
LNAV/VNAV DA	958-1	250 (300-1)		NA
LNAV MDA	1100-1	392 (400-1)	1100-1½ 392 (400-1½)	NA
CIRCLING	1140-1 432 (500-1)	1240-1 532 (600-1)	1240-1½ 532 (600-1½)	NA

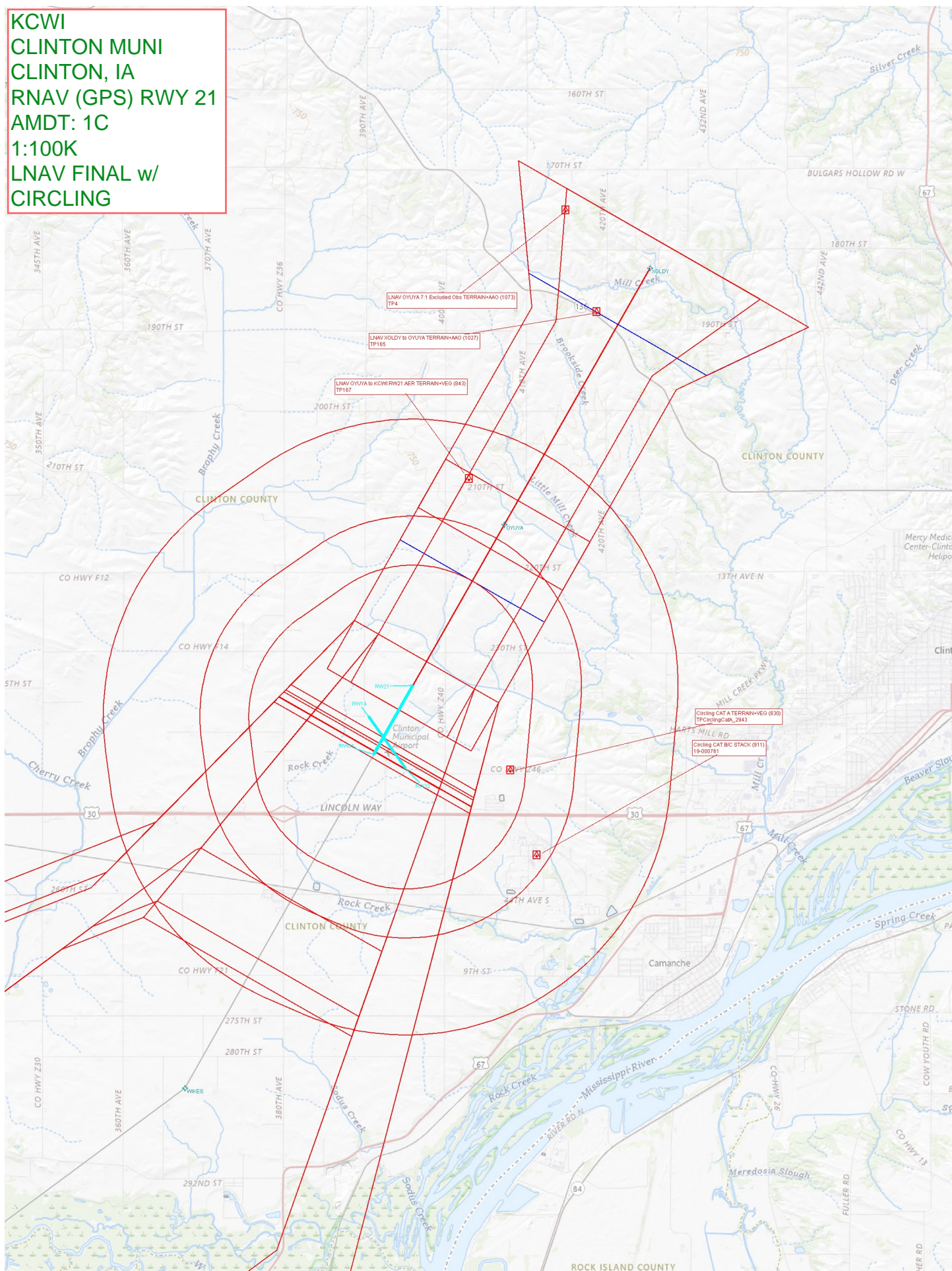
NC-3, 17 APR 2025 to 15 MAY 2025

NC-3, 17 APR 2025 to 15 MAY 2025

KCWI
CLINTON MUNI
CLINTON, IA
RNAV (GPS) RWY 21
AMDT: 1C
1:100K
LNAV/VNAV FINAL



KCWI
 CLINTON MUNI
 CLINTON, IA
 RNAV (GPS) RWY 21
 AMDT: 1C
 1:100K
 LNAV FINAL w/
 CIRCLING



KCWI
CLINTON MUNI
CLINTON, IA
RNAV (GPS) RWY 21
AMDT: 1C
1:500K
LNAV MISSED CIH