

Flight Procedures Cover Page	Task Action: FLIGHT CHECK	Task Type: IAP	Estimated Chart Date: 06/12/2025	APWS Task ID: 0028B886ED6241B19FF152552231FE94	APWS Project ID: 28A60582551841129B1643051FCA0E44
Procedure: ILS OR LOC RWY 16L SA CAT I/CAT II/III AMDT 9		Enroute: NO	Specialist: Taylor, Jantzen		Agreement Number:
Airport ID: KJAN			Airport City: JACKSON		State: MS
Facility ID: JAN	Facility Type: ILS	Flight Inspection Remark Type: New FC Slot			
<div>Procedure Comments: ESV for I-JAN LOC R339/22</div> <div>ACTIVE DATE USED FOR AIRPORT AND RWYS CONTACT RAKE MCGRAW: AJV-A422: 405.954.8711</div> <div>05/06/25: THIS IS A CORRECTED COPY OF THE FORM APPROVED ON 05/05/25. REMOVED REDUNDANT SA CAT I/CAT II/III INFORMATION FROM PROCEDURE NAME - CORRECTED PROCEDURE NAME IAW 8260.19J 8-6-2,B,2</div> <div>QUALITY 9 CHECKED BEGUE</div> <div>QUALITY 16 CHECKED</div> <div>QUALITY 10 CHECKED</div>					

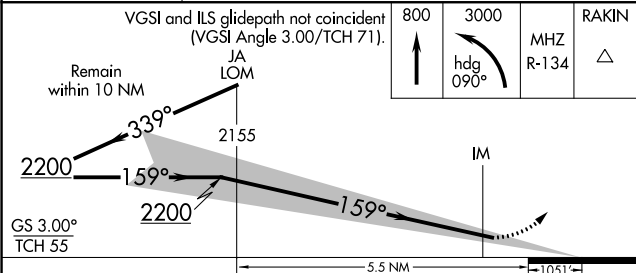
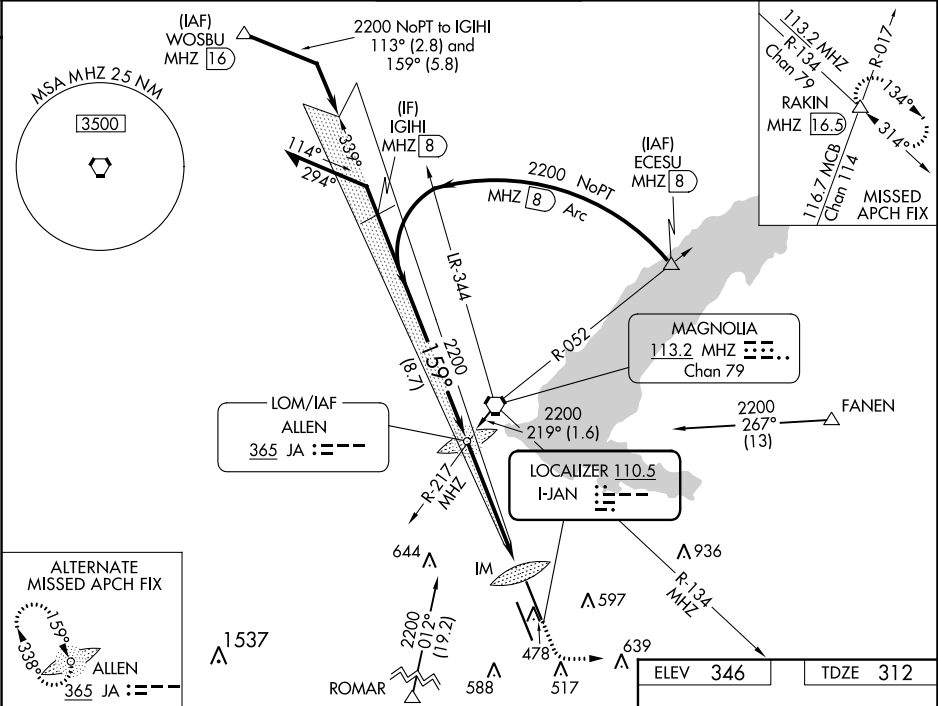
FIPC BASIC FORM						
PROCEDURE: ILS OR LOC RWY 16L SA CAT I/CAT II/III AMDT 9			AIRPORT NAME: JACKSON-MEDGAR WILEY EVERS		AIRPORT ID: KJAN	SPECIAL CONTROL NO: AP-03-251-25
FAC ID: JAN		CITY: JACKSON			ST: MS	ORIG CHART DATE: 06/12/2025
DFL TYPE: PROC/A	THIRD PARTY: <input type="checkbox"/> YES	EST. TIME ON SITE: 0.4	REIMB. NUMBER:	PTS TASK ID: 0028B886ED6241B19FF152552231FE94		
PREFLIGHT NOTES						
REVIEWER:					DATE:	
COMMENTS:					CHECK ONE:	
					<input type="checkbox"/> FLT CK REQ <input type="checkbox"/> NFCR <input type="checkbox"/> REJECT	
						YES
					CPV COMPLETE?	X
PROCEDURE RESULTS						
INSPECTION DATE: 05/01/2025	CREW #: VN568	N #: N67	INSTRUMENT PROCEDURE STATUS: <input checked="" type="checkbox"/> SAT <input type="checkbox"/> SAT W/CHANGES <input type="checkbox"/> UNSAT		ARINC CODING: <input type="checkbox"/> SAT <input type="checkbox"/> SAT/GOLD <input type="checkbox"/> UNSAT	
FLIGHT INSPECTOR SIGNATURE: russell roslewski @ 05/02/2025 13:35			PRINTED NAME: ROSLEWSKI, RUSSELL BRIAN			NOTAM INITIATED? <input type="checkbox"/> YES <input checked="" type="checkbox"/> NO
FLIGHT INSPECTOR REMARKS:						
IN-FLIGHT OBSTACLE REPORT						
OBSTRUCTION ID #:	COORDINATES OR LOCATION:	GNSS ALTITUDE (MSL):	BAROMETRIC ALTITUDE (MSL):	HEIGHT ABOVE GROUND LEVEL:		

LOC I-JAN 110.5	APP CRS 159°	Rwy Idg TDZE Apt Elev	8500 312 346
---------------------------	------------------------	-----------------------------	---

ILS RWY 16L (CAT II & III)
JACKSON-MEDGAR WILEY EVERS INTL (JAN)

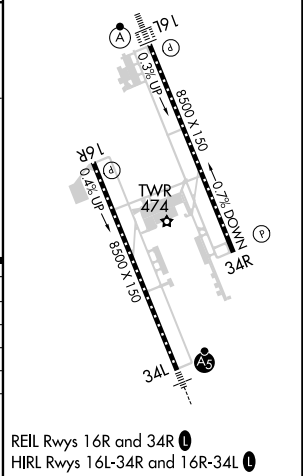
T When control tower closed, procedure NA. ASR When local alimeter setting not received, procedure NA.	ALSF-2 	MISSED APPROACH: Climb to 800 then climbing left turn to 3000 on heading 090° and MHZ VORTAC R-134 to RAKIN INT/MHZ 16.5 DME and hold.
---	-------------------	---

ATIS 121.05	JACKSON APP CON * 123.9 317.7	JACKSON TOWER * 120.9 (CTAF) 0 352.0	GND CON 121.7 348.6	UNICOM 122.95
------------------------------	--	---	--------------------------------------	--------------------------------



CATEGORY	A	B	C	D
S-ILS 16L		CAT II	RA 119/12 100	DA 412
S-ILS 16L		CAT IIIA	RVR 07	
S-ILS 16L		CAT IIIB	RVR 06	
S-ILS 16L		CAT IIIC	NA	

CATEGORY II & III ILS - SPECIAL AIRCREW
& AIRCRAFT CERTIFICATION REQUIRED

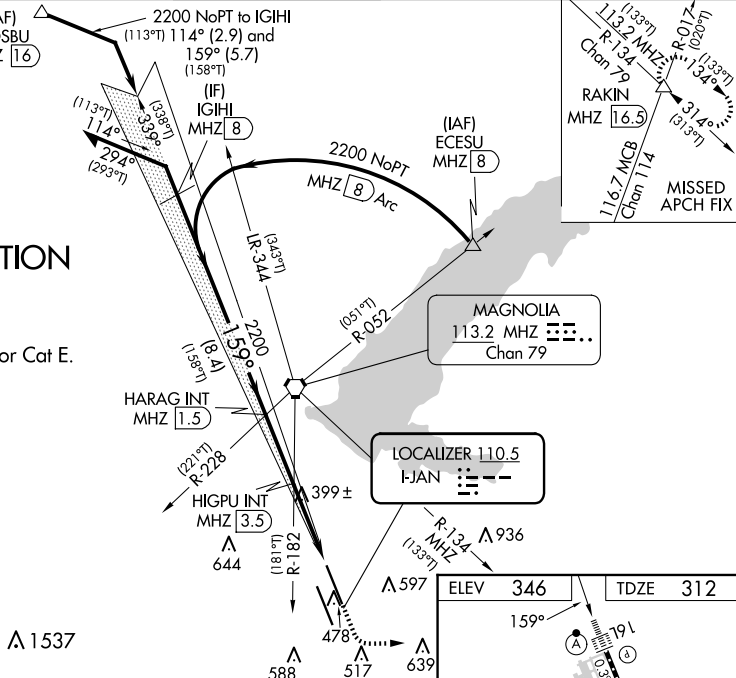
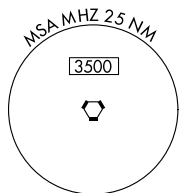


ILS or LOC RWY 16L
JACKSON-MEDGAR WILEY EVERS INTL (JAN)

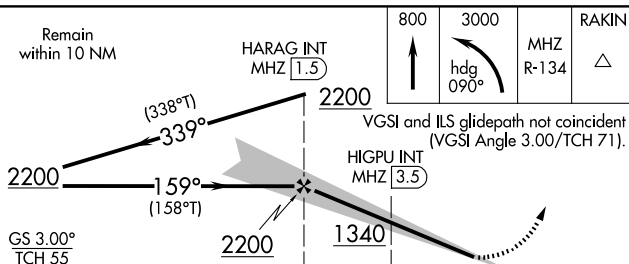
MISSED APPROACH: Climb to 800 then climbing left turn to 3000 on heading 090° and on MHZ VORTAC R-134 to RAKIN INT/16.5 DME and hold, continue climb-in-hold to 3000.



Procedure turn NA for Cat E.



Remain
within 10 NM



		2.7 NM		3.1 NM				RLIL Rwy's 10R and 34R HIRL Rwy's 16L/34L and 16R/34L		
CATEGORY	A	B	C	D	E					
S-ILS 16L	512/18 200 (200-½)									
S-LOC 16L	660/24	348 (400-½)	660/30 348 (400-¾)			FAF to MAP 5.8 NM				
CIRCLING	880-1	900-1	900-1½	960-2	1040-2½					
	534 (600-1)	554 (600-1)	554 (600-1½)	614 (700-2)	694 (700-2½)	Knots	6:40	3:52	2:54	2:19

JACKSON-MEDGAR WILEY EVERS INTL (JAN)

ILS or LOC RWY 16L

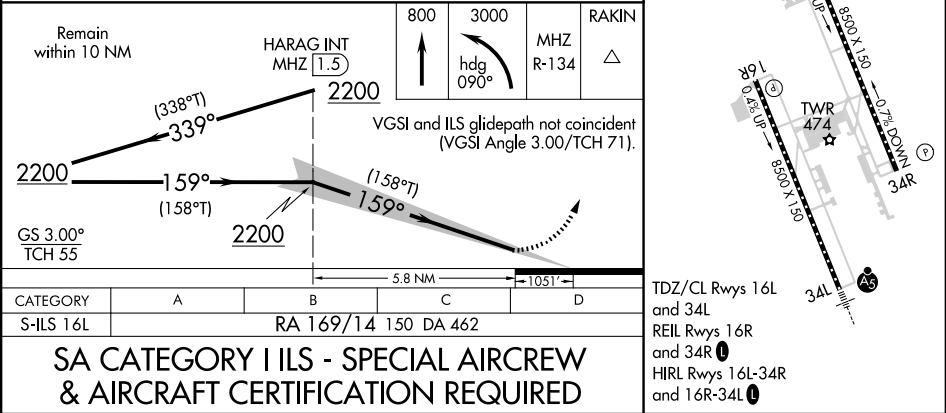
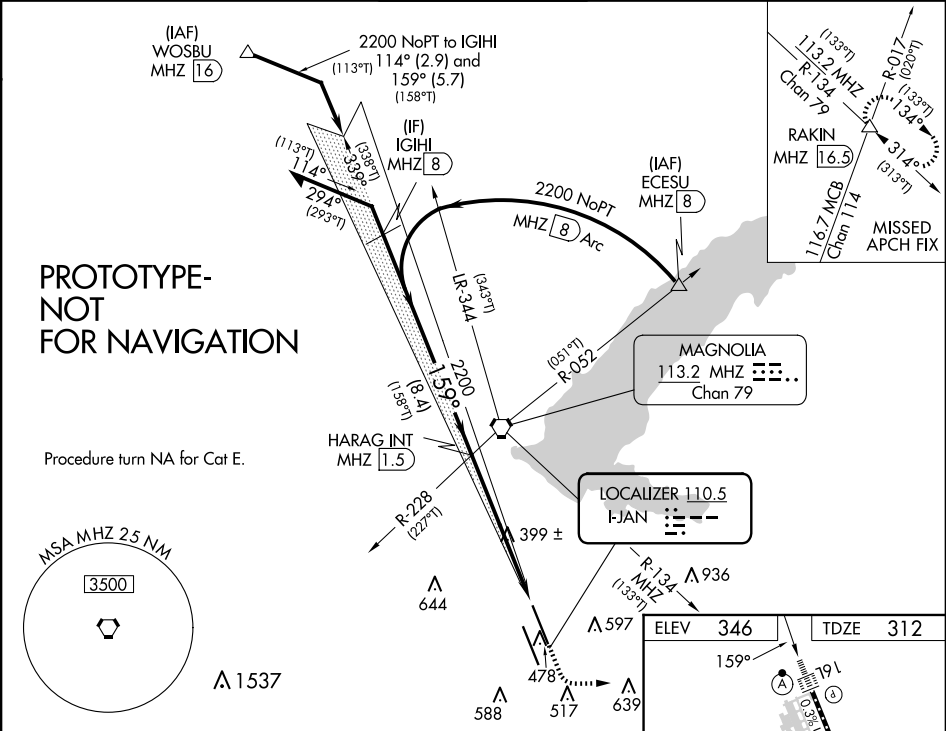
LOC I-JAN	APP CRS	Rwy Idg	8500
110.5	159°	TDZE	312
		Apt Elev	346

ILS RWY 16L (SA CAT I)

JACKSON-MEDGAR WILEY EVERS INTL (JAN)

DME or RADAR required for Cat E.	ALSF-2	MISSED APPROACH: Climb to 800 then climbing left turn to 3000 on heading 090° and on MHz VORTAC R-134 to RAKIN INT/16.5 DME and hold, continue climb-in-hold to 3000.
When control tower closed, procedure NA. When local altimeter setting not received, procedure NA. Requires specific OPSPEC, MSPEC, or LOA approval and use of HUD TO DA.		

ATIS	JACKSON APP CON★	JACKSON TOWER★	GND CON	UNICOM
121.05	123.9 317.7	120.9 (CTAF) 0 352.0	121.7 348.6	122.95



DME or RADAR required for Cat E.

▼

When control tower closed, procedure NA.

▲

When local altimeter setting not received, procedure NA.

ALSIF-2

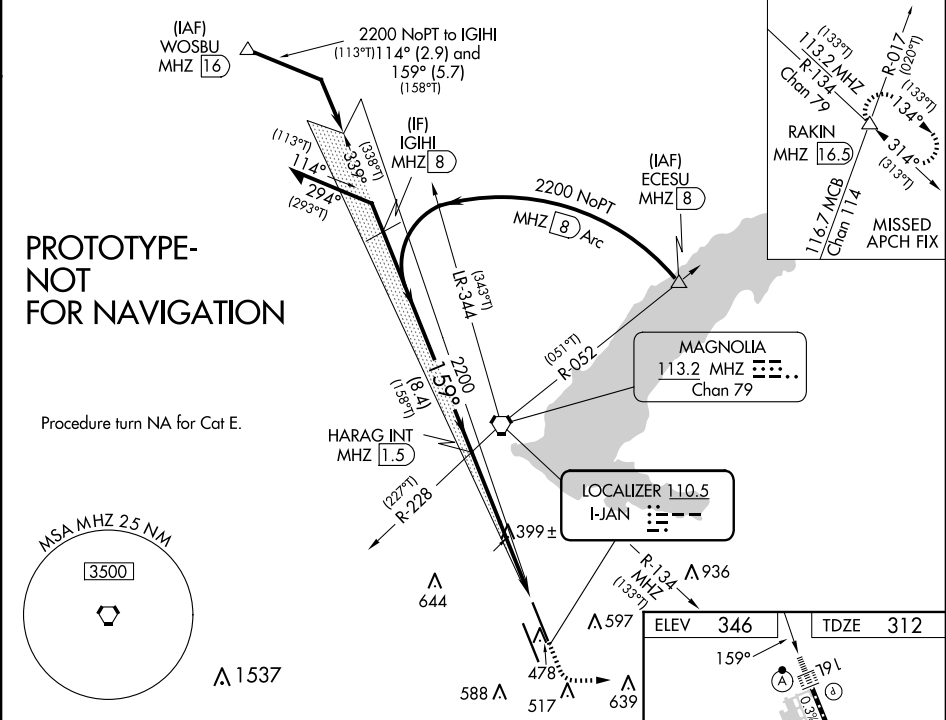
ⓐ

ILS

ILS

MISSED APPROACH: Climb to 800 then climbing left turn to 3000 on heading 090° and on MHz VORTAC R-134 to RAKIN INT/16.5 DME and hold, continue climb-in-hold to 3000.

ATIS 121.05	JACKSON APP CON★ 123.9 317.7	JACKSON TOWER★ 120.9 (CTAF) 0 352.0	GND CON 121.7 348.6	UNICOM 122.95
----------------	---------------------------------	--	------------------------	------------------



Remain within 10 NM

HARAG INT MHz 1.5

2200

339°

159°

GS 3.00° TCH 55

2200

158°T

159°

5.8 NM

1051'

800

3000

hdg 090°

MHz R-134

RAKIN

△

VGSI and ILS glidepath not coincident (VGSI Angle 3.00/TCH 71).

CATEGORY	A	B	C	D
S-ILS 16L	CAT II RA 119/12 100 DA 412			
S-ILS 16L	CAT III RVR 07			

CATEGORY II & III ILS - SPECIAL AIRCREW & AIRCRAFT CERTIFICATION REQUIRED

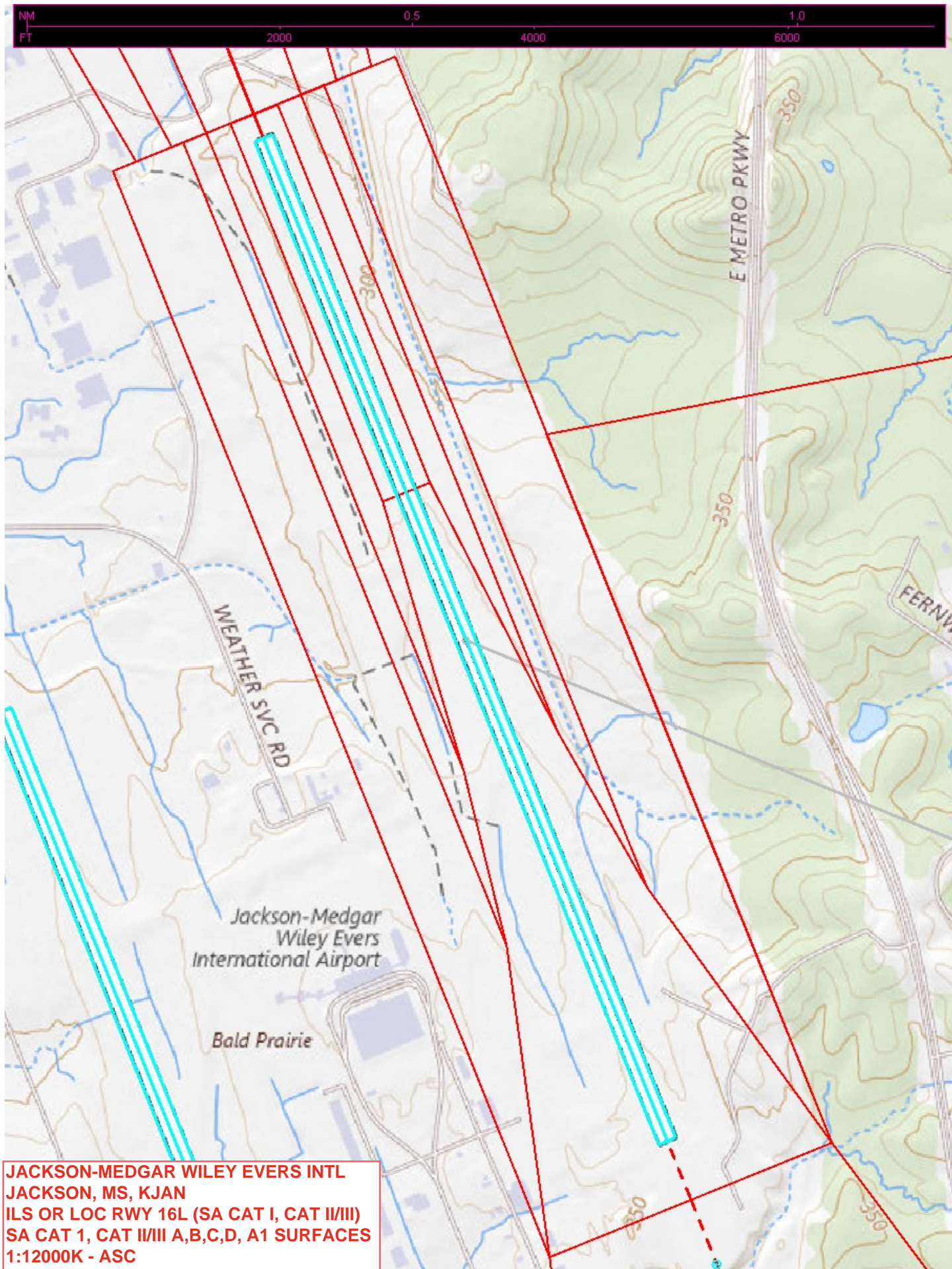
TDZ/CL Rwy 16L and 34L

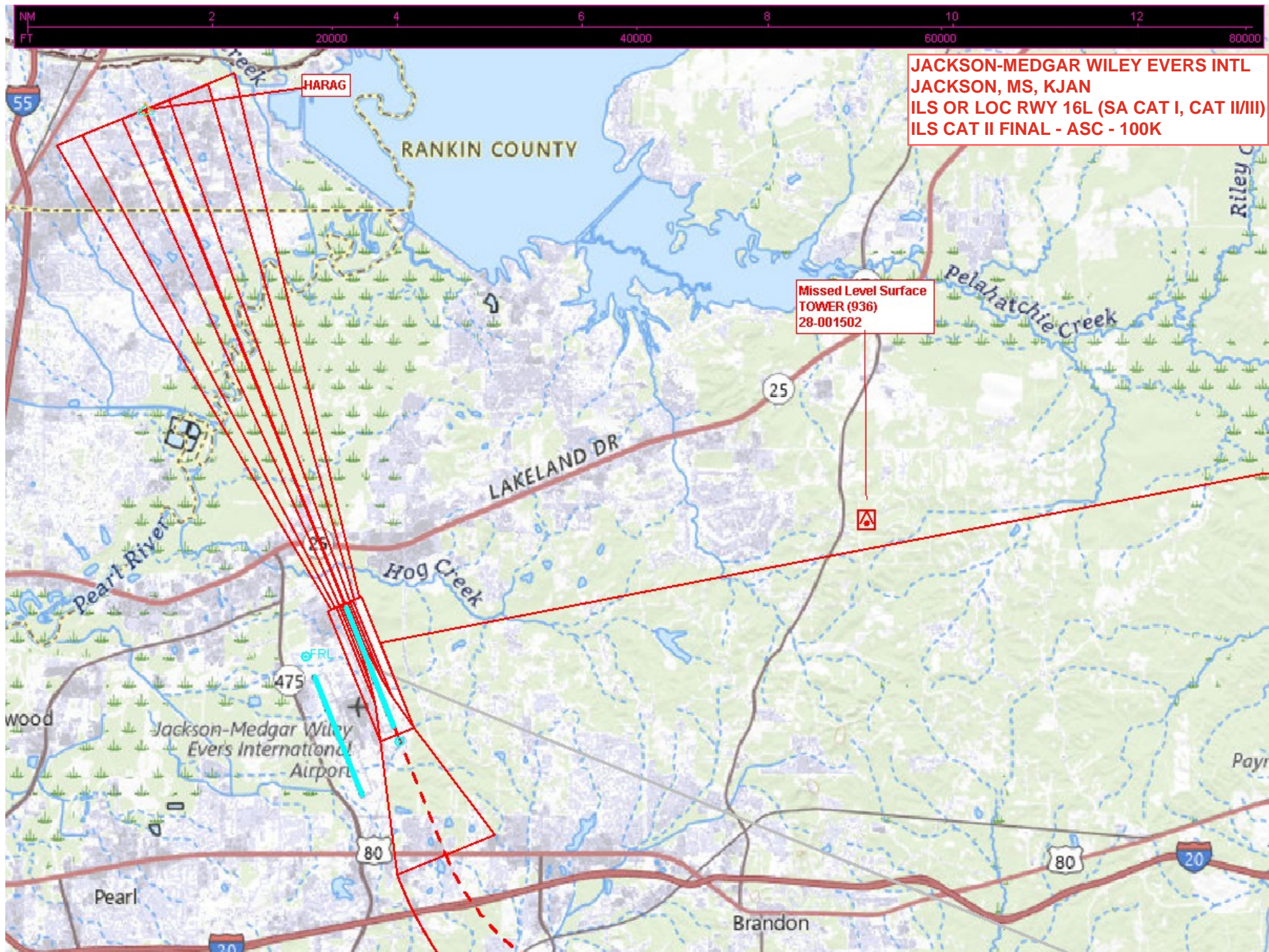
REIL Rwy 16R and 34R

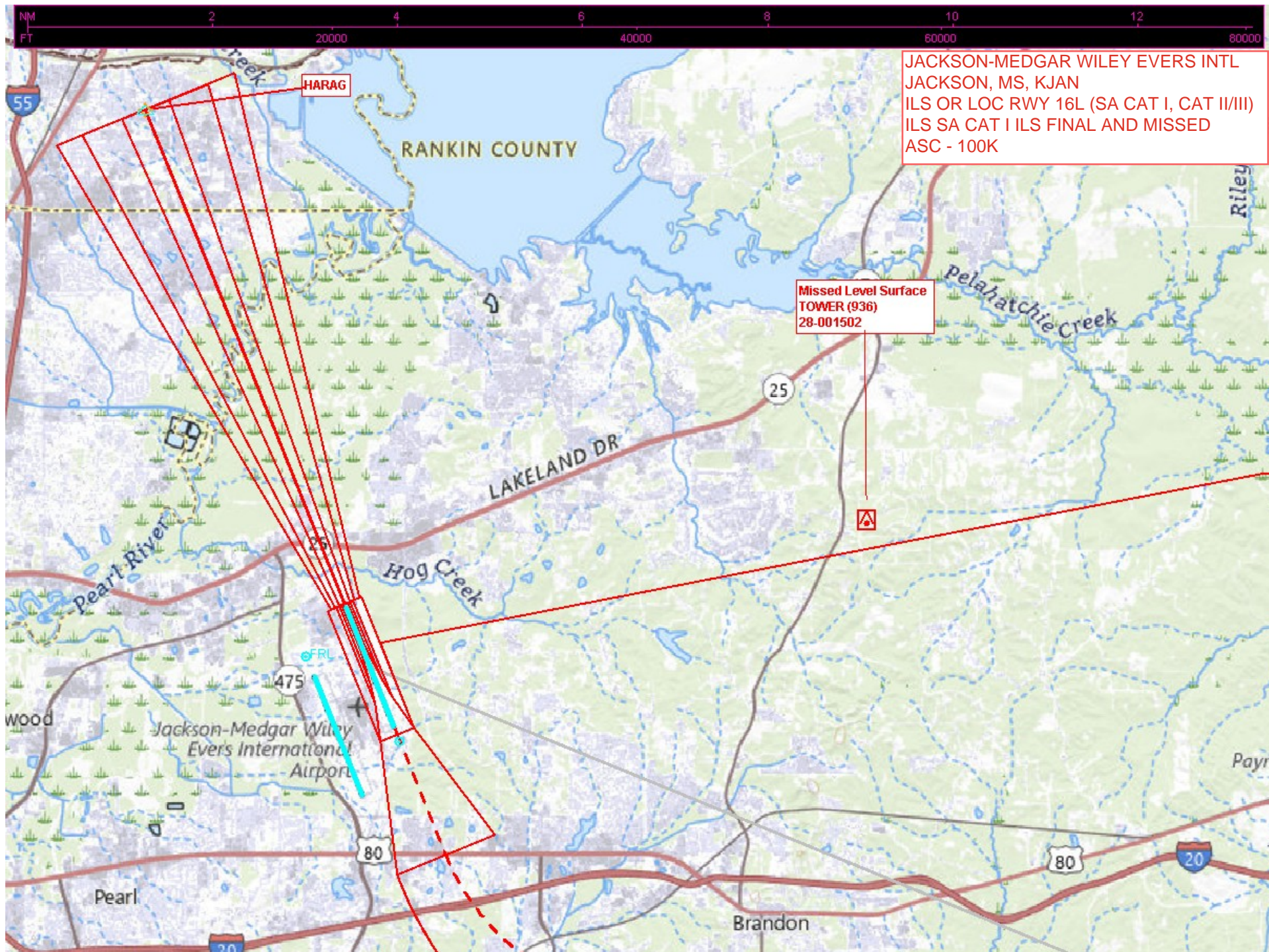
HIRL Rwy 16L-34R and 16R-34L

ESV Details

Originating Office :AJV-A45		Airspace Docket Number :		Request Type :Establish		
Facility Data						
Chart Name:ILS OR LOC RWY 16L KJAN EXT		City:JACKSON		Ident:JAN		State:MS
Type/Class: LOC		Frequency: M110.5		Reference Number: 25038508		
Extended Service Volume Data: (Requesting Officer)						
ESV ID	Radial 1	Radial 2	Distance	Minimum Altitude	Maximum Altitude	
FAA 042085 - 001	339		22	22	175	
Requirement: ILS OR LOC RWY 16L KJAN EXT						
Signature:Gurney Rebecca		Routing Symbol:AJV-A45				Date:03/20/2025
Extended Service Volume Data: (FMO)						
ESV ID	Radial 1	Radial 2	Distance	Minimum Altitude	Maximum Altitude	Action Type
FAA 042085 - 001	339		22	22	175	APPROVE
Requirement/Remarks: ILS OR LOC RWY 16L KJAN EXTAPPROVED. FREQ. PROTECTION & FIELD STRENGTH. PENDING FLIGHT INSPECT @ REQUIRED. DIST. & MIN ALT..						
Signature:Hughes Dennis		Routing Symbol:			Date:03/25/2025	
Extended Service Volume Data: (Super FMO)						
ESV ID	Radial 1	Radial 2	Distance	Minimum Altitude	Maximum Altitude	Action Type
FAA 042085 - 001	339		22	22	175	APPROVE
Requirement/Remarks: ILS OR LOC RWY 16L KJAN EXTAPPROVED. FREQ. PROTECTION & FIELD STRENGTH. PENDING FLIGHT INSPECT @ REQUIRED. DIST. & MIN ALT..						
Signature:Hughes Dennis		Routing Symbol:			Date:03/25/2025	
Extended Service Volume Data: (FIFO)						
ESV ID	Radial 1	Radial 2	Distance	Minimum Altitude	Maximum Altitude	Action Type
FAA 042085 - 001	339					
Requirement/Remarks:						
Signature:		Routing Symbol:			Date:	







JACKSON-MEDGAR WILEY EVERS INTL
JACKSON, MS, KJAN
ILS OR LOC RWY 16L (SA CAT I, CAT II/III)
ILS SA CAT I ILS FINAL AND MISSED
ASC - 100K

Missed Level Surface
TOWER (936)
28-001502

