

Flight Procedures Cover Page	Task Action: P-NOTAM	Task Type: IAP	Estimated Chart Date: 09/09/2021	APWS Task ID: 001DDEA7D7204368B8ECEA5CE423F689	APWS Project ID: 6C0069AADDE544DE9998C7848EBC792E
Procedure: RNAV (GPS) RWY 23 AMDT 1C		Enroute: NO	Specialist: Lafferty, James		Agreement Number:
Airport ID: KACJ			Airport City: AMERICUS		State: GA
Facility ID:	Facility Type:	Flight Inspection Remark Type:			
<p>Procedure Comments:</p> <p>P-NOTAM</p> <p>This Cancels FDC 0/1321</p> <p>Order 8260.3, chapter 2, New Circling Criteria Applied</p> <p>Contact Dave Teffeteller at 202-267-5177</p>					

QUALITY
45
CHECKED

Digitally signed by
MARY MCDONALD 12
Mar 31, 2021
CHECKED

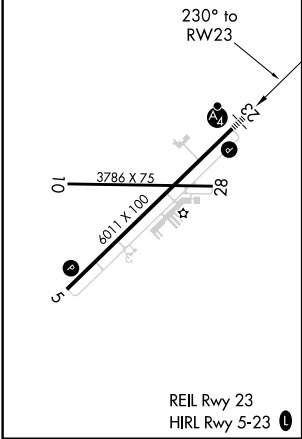
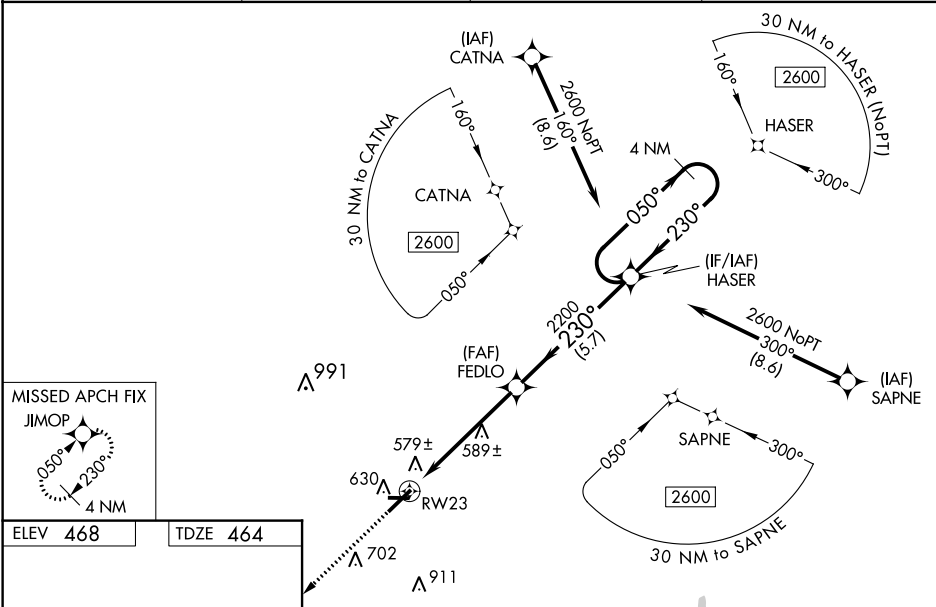
WAAS CH 70724 W23A	APP CRS 230°	Rwy Idg TDZE 464 Apt Elev 468	6011 464 468
----------------------------------------	------------------------	---------------------------------------------------	-----------------------------------------



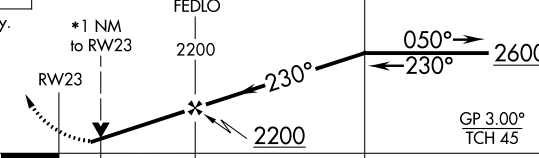
OLD

RNAV (GPS) RWY 23
JIMMY CARTER RGNL (ACJ)

RNP APCH.	Baro-VNAV NA and VDP NA when using Columbus altimeter setting. For uncompensated Baro-VNAV systems, LNAV/VNAV NA below -15°C or above 41°C. For inop ALS when using Columbus altimeter setting, increase LPV and LNAV/VNAV all Cats visibility to 1½ SM, LNAV Cats C and D visibility to 1½ SM, and Circling Cat D visibility to 2¼ SM. Rwy 23 helicopter visibility reduction below ¾ SM NA. When local altimeter setting not received, use Columbus altimeter setting and increase LPV DA to 874, LNAV/VNAV DA to 879 and all visibilities ¾ SM; increase all MDA 120 feet and LNAV Cats C and D visibility ¾ SM, and Circling Cat D visibility ¼ SM. For inop ALS, increase LPV all Cats, LNAV/VNAV Cat D, and LNAV Cat D visibility to 1 SM. Circling Rwy 10, 28 NA at night.	MALSF	MISSED APPROACH: Climb to 2600 direct JIMOP and hold.
-----------	-----------------------------------------------------------------------------------------------------------------------------------------------------------------------------------------------------------------------------------------------------------------------------------------------------------------------------------------------------------------------------------------------------------------------------------------------------------------------------------------------------------------------------------------------------------------------------------------------------------------------------------------------------------------------------------------------------------------------------------------------------------------------------------	-------	----------------------------------------------------------

AWOS-3 128.375	ATLANTA APP CON★ 124.2 323.1	CLNC DEL 119.95	UNICOM 122.8 (CTAF)
--------------------------	----------------------------------------	---------------------------	-------------------------------



2600	JIMOP	VGSI and RNAV glidepath not coincident (VGSI Angle 3.00/TCH 59°).			
		4 NM Holding Pattern			
* LNAV only.					
					
CATEGORY	A		B	C	D
LPV DA	760-¾		296 (300-¾)		
LNAV/ VNAV DA	765-¾		301 (300-¾)		
LNAV MDA	840-¾	376 (400-¾)	840-¾	376 (400-¾)	
CIRCLING	940-1	472 (500-1)	940-1½ 472 (500-1½)	1020-2 552 (600-2)	

SE-4, 23 APR 2020 to 21 MAY 2020

SE-4, 23 APR 2020 to 21 MAY 2020

