

APP CRS	Rwy Idg	N/A
124°	TDZE	N/A
	Apt Elev	1126

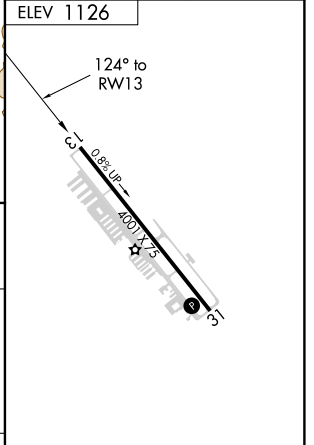
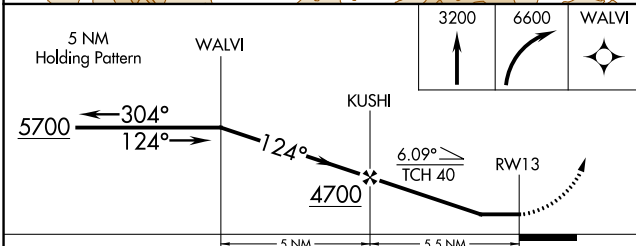
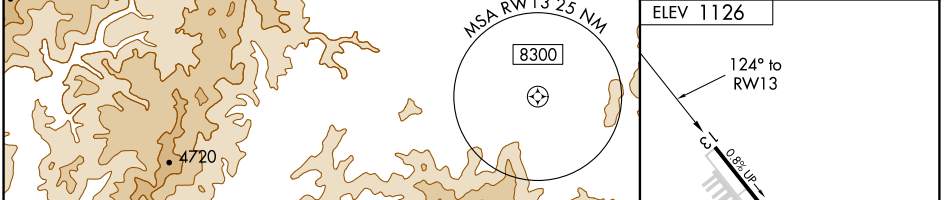
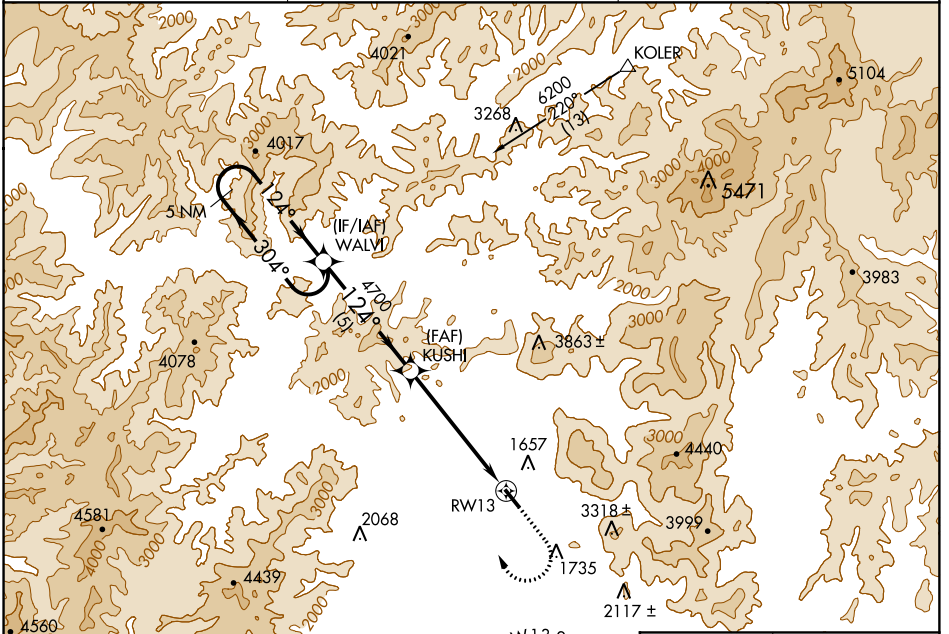
RNAV (GPS)-A

GRANTS PASS (3S8)

NA Circling NA northeast of Rwy 13-31. DME/DME RNP-0.3 NA. Visibility reduction by helicopters NA. When local altimeter setting not received, use Medford altimeter setting and increase all MDA 580 feet.

MISSED APPROACH: Climb to 3200 then climbing right turn to 6600 direct WALVI and hold, continue climb-in-hold to 6600.

AWOS-3PT 120.0	CASCADE APP CON * 124.3 379.9	UNICOM 122.8 (CTAF) 0
--------------------------	---	---------------------------------



CATEGORY	A	B	C	D
CIRCLING	2920-1¼ 1794 (1800-1¼)	2920-1½ 1794 (1800-1½)	NA	

REIL Rwy 13 and 31 **0**
MIRL Rwy 13-31 **0**

NW-1, 11 OCT 2018 to 08 NOV 2018

NW-1, 11 OCT 2018 to 08 NOV 2018