

APP CRS	Rwy Idg	N/A
232°	TDZE	N/A
	Apt Elev	24

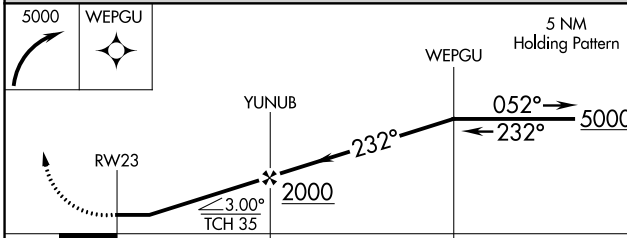
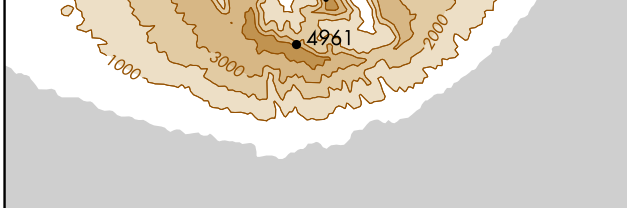
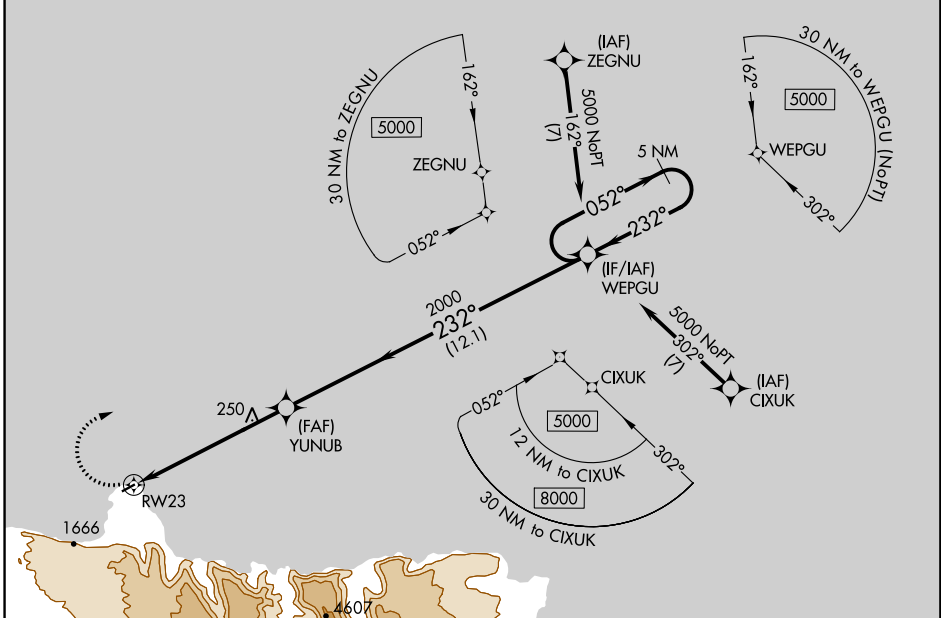
RNAV (GPS)-A

KALAUPAPA (LUP) (PHLU)

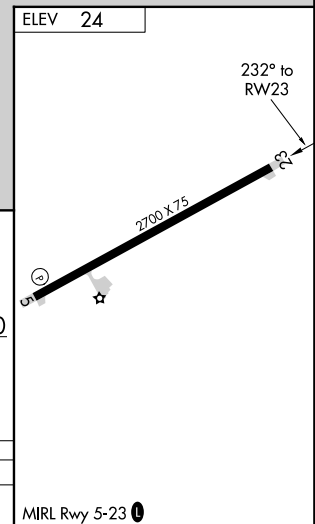
NA Circling NA south of Rwy 23. DME/DME RNP-0.3 NA.
 Procedure NA at night. Visibility reduction by helicopters NA.
 Use Kaunakakai altimeter setting; when not received, procedure NA.

MISSED APPROACH: Climbing right turn to 5000 direct WEGU and hold.

HCF CENTER 124.1 317.5	CTAF 122.9
----------------------------------	----------------------



CATEGORY	A	B	C	D
CIRCLING	660-1	636 (700-1)	NA	



PAC, 13 SEP 2018 to 08 NOV 2018

PAC, 13 SEP 2018 to 08 NOV 2018