

WAAS CH <b>58319</b> <b>W34A</b>	APP CRS <b>344°</b>	Rwy Idg TDZE Apt Elev	<b>6000</b> <b>100</b> <b>100</b>
--	------------------------	-----------------------------	---

# RNAV (GPS) RWY 34

YOLO COUNTY (DWA)

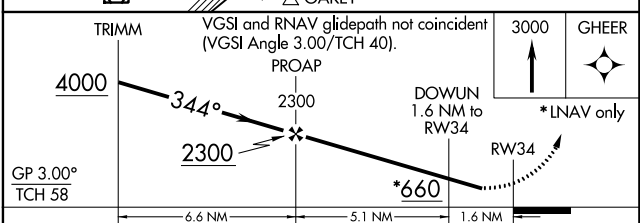
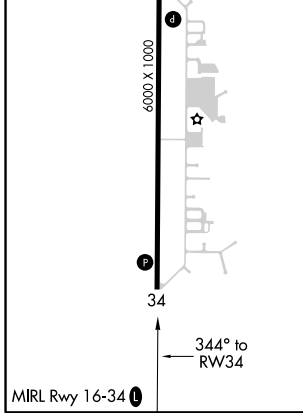
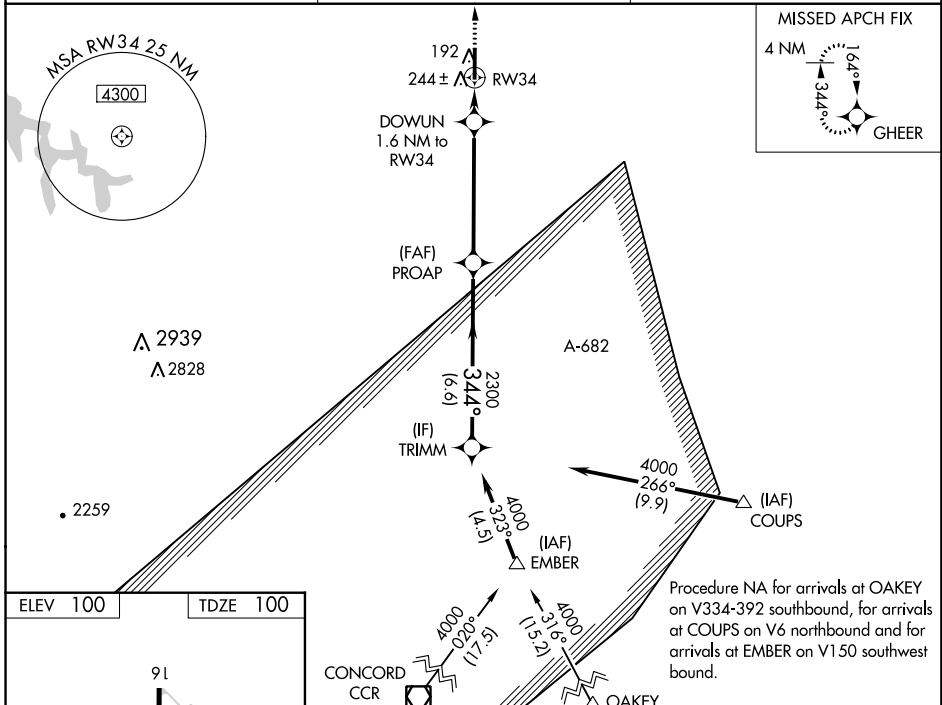
**NA** DME/DME RNP-0.3 NA. When local altimeter setting not received, use Travis AFB altimeter setting and increase all DA 50 feet and all MDA 60 feet, and increase LPV visibility all Cats 1/8 mile, LNAV/VNAV visibility all Cats 1/4 mile, and LNAV Cat C and D visibility 1/4 mile. For uncompensated Baro-VNAV systems, LNAV/VNAV NA below -1.5°C (5°F) or above 42°C (107°F). Baro-VNAV NA when using Travis AFB altimeter setting.

MISSED APPROACH: Climb to 3000 direct GHEER and hold.

AWOS-3  
**125.775**

TRAVIS APP CON  
**126.6 281.45**

UNICOM  
**123.0 (CTAF) 0**



GP 3.00° TCH 58	CATEGORY			A	B	C	D
	LPV DA			415-1 315 (400-1)			
	LNAV/VNAV DA			425-1 325 (400-1)			
	LNAV MDA		500-1 400 (400-1)		500-1 1/8 400 (400-1 1/8)		
	CIRCLING		560-1 460 (500-1)		560-1 1/2 460 (500-1 1/2)		660-2 560 (600-2)

SW-2, 11 OCT 2018 to 08 NOV 2018

SW-2, 11 OCT 2018 to 08 NOV 2018