

AIRPORT DIAGRAM

BIRMINGHAM-SHUTTLESWORTH INTL (BHM)
AL-50 (FAA)
BIRMINGHAM, ALABAMA

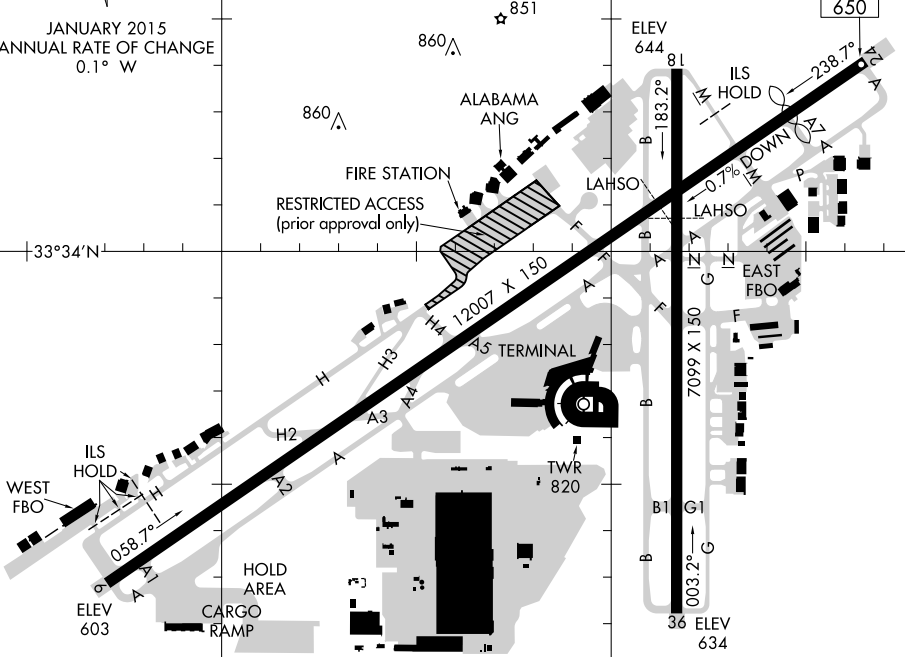
ATIS
119.4 270.1
BIRMINGHAM TOWER
119.9 317.725
GND CON
121.7 348.6
CLNC DEL
125.675 305.2

D

33°35'N
33°34'N
33°33'N
MAG 3.2° W
JANUARY 2015
ANNUAL RATE OF CHANGE
0.1° W

RWY 06-24
PCN 65 F/C/X/T
S-175, D-205, 2S-175, 2D-350
RWY 18-36
PCN 45 F/C/X/T
S-75, D-170, 2S-175, 2D-240

FIELD
ELEV
650



CAUTION: BE ALERT TO RUNWAY CROSSING CLEARANCES.
READBACK OF ALL RUNWAY HOLDING INSTRUCTIONS IS REQUIRED.

86°46'W

86°45'W

AIRPORT DIAGRAM

BIRMINGHAM, ALABAMA
BIRMINGHAM-SHUTTLESWORTH INTL (BHM)

SE-4, 11 OCT 2018 to 08 NOV 2018

SE-4, 11 OCT 2018 to 08 NOV 2018