

APP CRS	Rwy Idg	3000
145°	TDZE	2063
	Apt Elev	2063

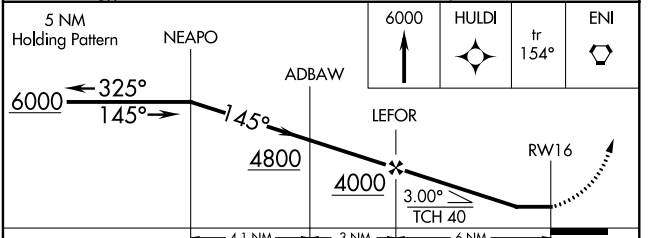
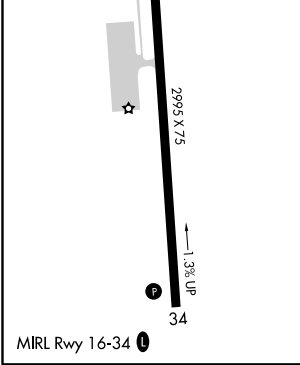
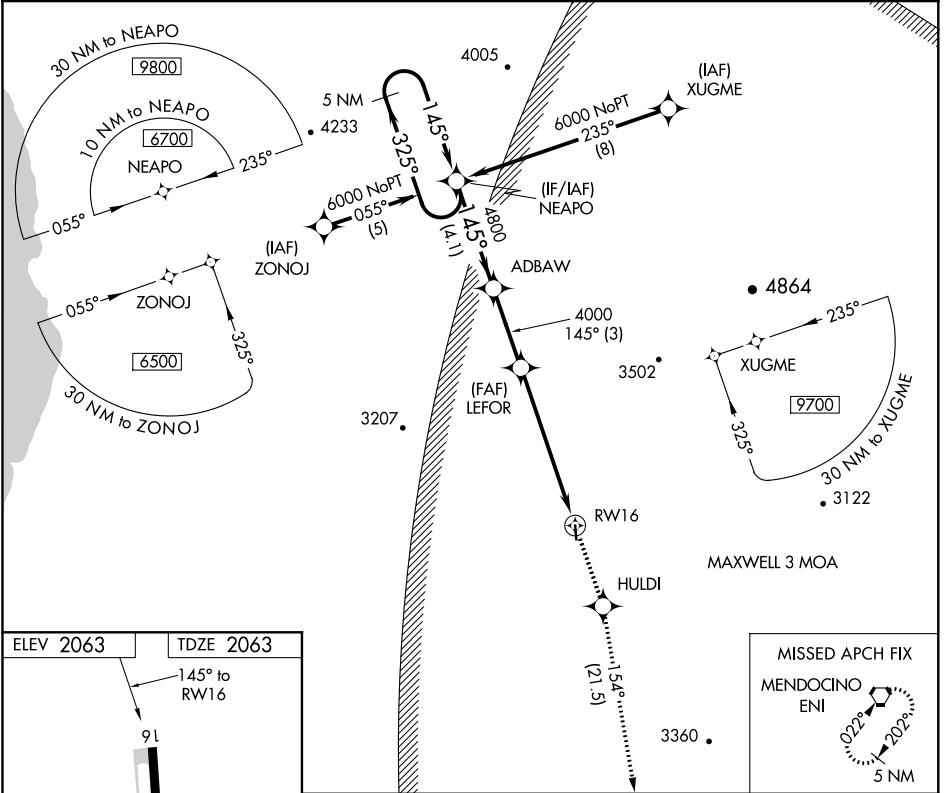
RNAV (GPS) RWY 16

ELLS FIELD-WILLITS MUNI (O28)

NA DME/DME RNP-0.3 NA. Helicopter visibility reduction below 1 SM NA. Circling NA west of Rwy 16/34. Procedure NA at night. Use Ukiah altimeter setting.

MISSED APPROACH: Climb to 6000 direct HULDI and on track 154° to ENI VORTAC and hold.

UKIAH MUNI ASOS 119.275	OAKLAND CENTER 132.2 350.3	UNICOM 122.8 (CTAF)
-----------------------------------	--------------------------------------	-------------------------------



CATEGORY	A	B	C	D
LNAV MDA	3680-1¼ 1617 (1700-1¼)	3680-1½ 1617 (1700-½)	3680-3 1617 (1700-3)	NA
CIRCLING	3680-1¼ 1617 (1700-1¼)	3680-1½ 1617 (1700-½)	3680-3 1617 (1700-3)	NA

SW-2, 26 APR 2018 to 24 MAY 2018

SW-2, 26 APR 2018 to 24 MAY 2018