

APP CRS	Rwy Idg	<b>3000</b>
<b>339°</b>	TDZE	<b>2063</b>
	Apt Elev	<b>2063</b>

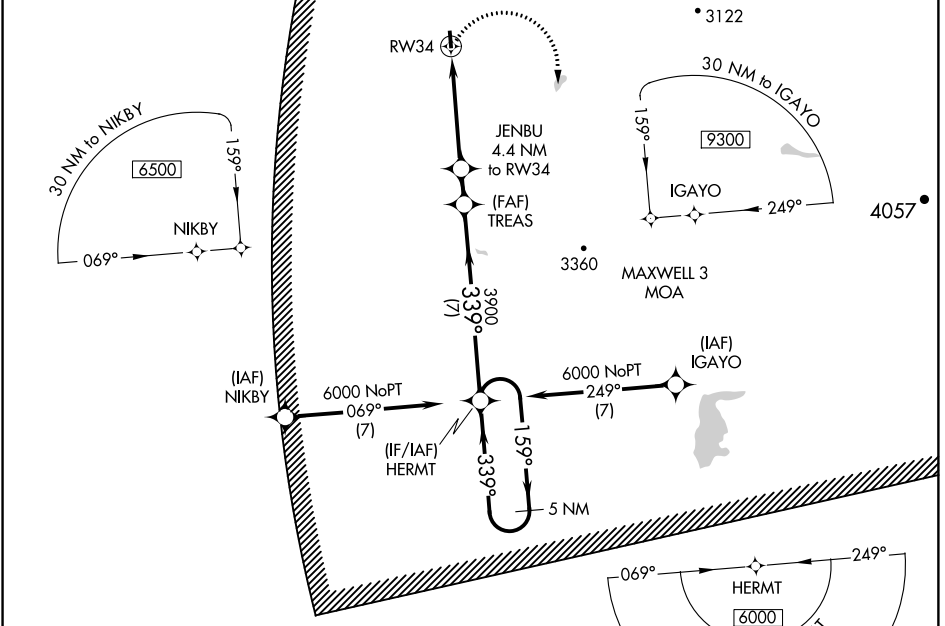
# RNAV (GPS) RWY 34

ELLS FIELD-WILLITS MUNI (O28)

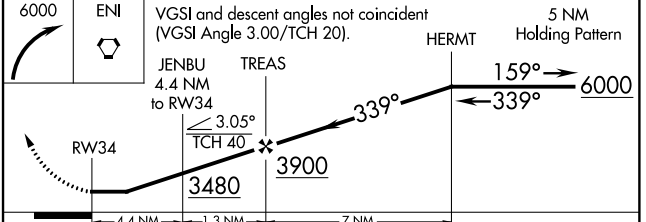
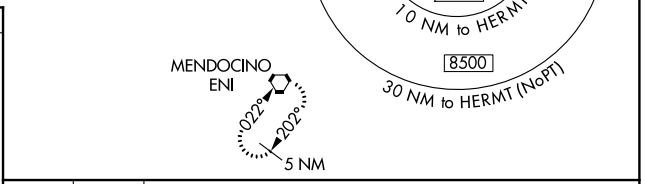
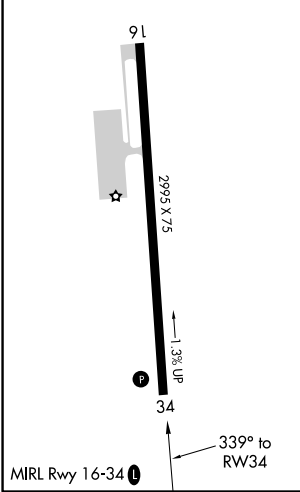
**NA** Circling NA west of Rwy 16 and 34. DME/DME RNP-0.3 NA. Helicopter visibility reduction below 1 SM NA. Procedure NA at right. Use Ukiah altimeter setting.

MISSED APPROACH: Climbing right turn to 6000 direct ENI VORTAC and hold.

UKIAH MUNI ASOS <b>119.275</b>	OAKLAND CENTER <b>132.2 350.3</b>	UNICOM <b>122.8 (CTAF) 0</b>
-----------------------------------	--------------------------------------	---------------------------------



ELEV 2063	TDZE 2063
-----------	-----------



CATEGORY	A	B	C	D
LNAV MDA	3200-1¼ 1137 (1200-1¼)	3200-1½ 1137 (1200-1½)	3200-3 1137 (1200-3)	NA
CIRCLING	3200-1¼ 1137 (1200-1¼)	3200-1½ 1137 (1200-1½)	3200-3 1137 (1200-3)	NA

SW-2, 29 MAR 2018 to 26 APR 2018

SW-2, 29 MAR 2018 to 26 APR 2018