

APP CRS	Rwy Idg	<b>3000</b>
<b>145°</b>	TDZE	<b>2063</b>
	Apt Elev	<b>2063</b>

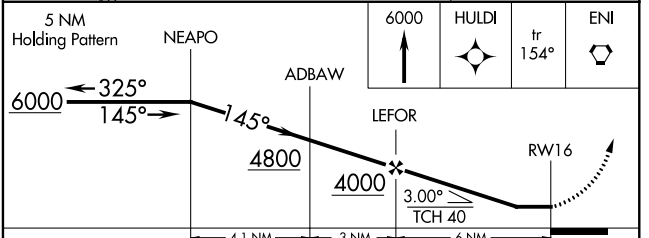
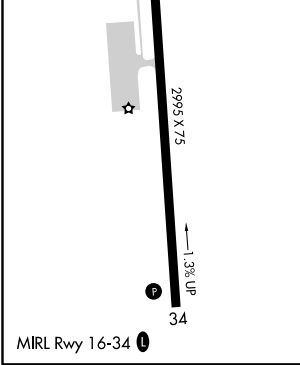
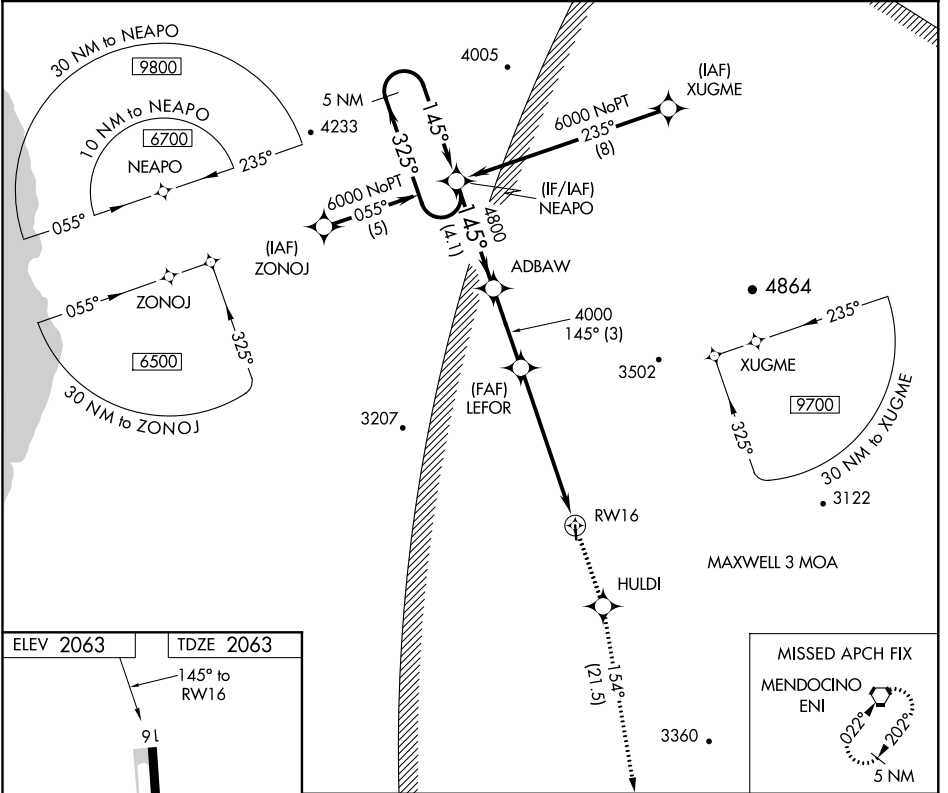
# RNAV (GPS) RWY 16

ELLS FIELD-WILLITS MUNI (O28)

**NA** DME/DME RNP-0.3 NA. Helicopter visibility reduction below 1 SM NA. Circling NA west of Rwy 16/34. Procedure NA at night. Use Ukiah altimeter setting.

MISSED APPROACH: Climb to 6000 direct HULDI and on track 154° to ENI VORTAC and hold.

UKIAH MUNI ASOS <b>119.275</b>	OAKLAND CENTER <b>132.2 350.3</b>	UNICOM <b>122.8 (CTAF)</b>
-----------------------------------	--------------------------------------	-------------------------------



CATEGORY	A	B	C	D
LNAV MDA	3680-1¼ 1617 (1700-1¼)	3680-1½ 1617 (1700-½)	3680-3 1617 (1700-3)	NA
CIRCLING	3680-1¼ 1617 (1700-1¼)	3680-1½ 1617 (1700-½)	3680-3 1617 (1700-3)	NA

SW-2. 01 MAR 2018 to 29 MAR 2018

SW-2. 01 MAR 2018 to 29 MAR 2018