

APP CRS	Rwy Idg	7000
259°	TDZE	5537
	Apt Elev	5537

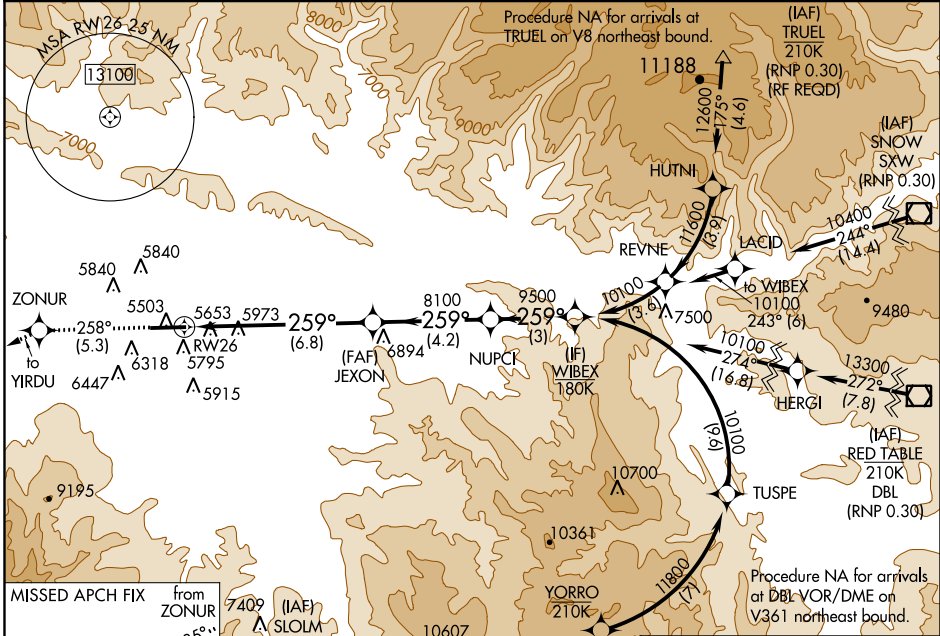
RNAV (RNP) Y RWY 26

RIFLE GARFIELD COUNTY (R.I.L)

When VGSI inoperative, procedure NA at night. For uncompensated Baro-VNAV systems, procedure NA below -24°C (-11°F) or above 38°C (100°F). GPS required.

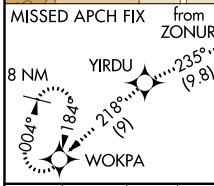
ODALS
 MISSED APPROACH: Climb to 13000 on track 258° to ZONUR and track 235° to YIRDU and track 218° to WOKPA and hold, continue climb-in-hold to 13000.

ASOS 135.275	DENVER CENTER 134.95 327.075	UNICOM 122.8 (CTAF) 0
------------------------	--	---------------------------------



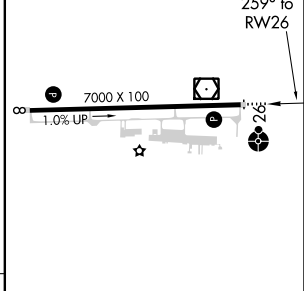
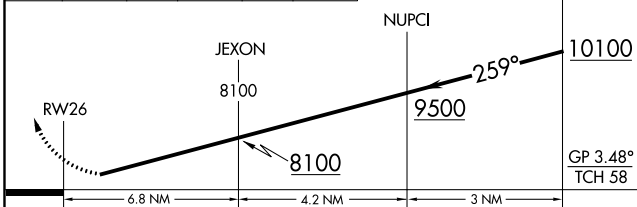
SW-1, 12 OCT 2017 to 09 NOV 2017

SW-1, 12 OCT 2017 to 09 NOV 2017



ELEV 5537	TDZE 5537
-----------	-----------

13000	ZONUR	YIRDU	WOKPA
↑	tr 258°	tr 235°	tr 218°



CATEGORY	A	B	C	D
RNP 0.30 DA	6387-2½		850 (900-2½)	NA

AUTHORIZATION REQUIRED

HIRL Rwy 8-26 0
 REIL Rwy 8 0