

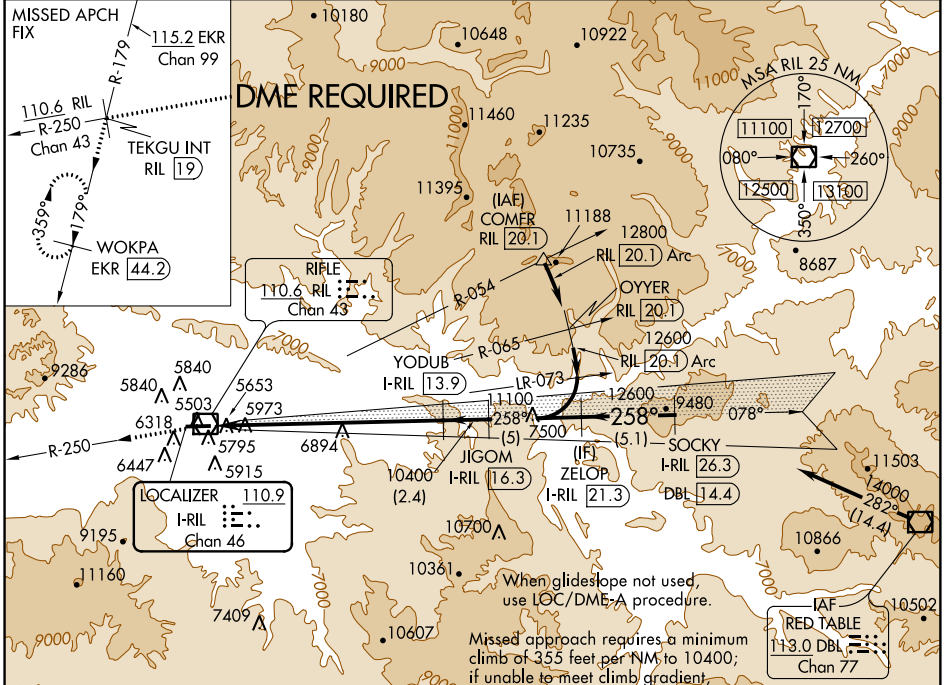
LOC/DME I-RIL 110.9 Chan 46	APP CRS 258°	Rwy Idg TDZE Apt Elev	7000 5537 5537
--	------------------------	-----------------------------	---

ILS RWY 26

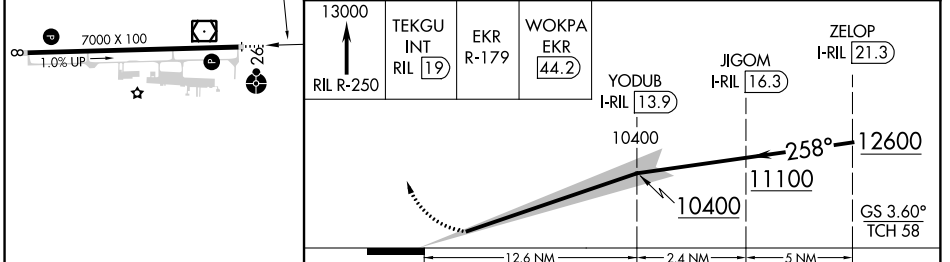
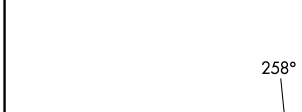
RIFLE GARFIELD COUNTY (RIL)

<p>Visibility reduction by helicopters NA. Use I-RIL DME when on localizer course. DME required. Circling not authorized. -15°C</p>	<p>ODALS</p>	<p>MISSED APPROACH: Climb to 13000 on RIL VOR/DME R-250 to TEKGU INT/RIL 19 DME and on EKR VOR/DME R-179 to WOKPA/EKR 44.2 DME and hold.</p>
---	--------------	--

ASOS 135.275	DENVER CENTER 134.95 327.075	UNICOM 122.8 (CTAF)
------------------------	--	-------------------------------



ELEV 5537	TDZE 5537
-----------	-----------



CATEGORY	A	B	C	D
S-ILS 26	6800-4	1263 (1300-4)		NA

SW-1, 12 OCT 2017 to 09 NOV 2017

SW-1, 12 OCT 2017 to 09 NOV 2017