

**SANTA FE RGNL** (SAF)(KSAF) P (ARNG) 9 SW UTC-7(-6DT) N35°37.03' W106°05.37'

**ALBUQUERQUE**

6349 B TPA—See Remarks ARFF Index—See Remarks NOTAM FILE SAF

H-4L, 6F, L-8I

**RWY 02-20:** H8366X150 (ASPH-PFC) S-116, D-164, 2S-83, 2D-269

IAP, AD

PCN 46 F/C/X/T MIRL

**RWY 02:** VASI(V4L)—GA 3.0° TCH 69'. Hill. 0.9% up.

**RWY 20:** REIL. VASI(V4L)—GA 3.0° TCH 54'. 0.9% down.

**RWY 15-33:** H6316X100 (ASPH-GRVD) S-28, D-43.5

PCN 10 F/C/Y/T MIRL 0.7% up NW

**RWY 15:** REIL.

**RWY 33:** REIL. VASI(V4R)—GA 3.0° TCH 86'.

**RWY 10-28:** H6301X75 (ASPH-PFC) S-12.5 PCN 4 F/C/Y/T

0.3% up E

**RWY 10:** REIL.

**RWY 28:** Road.

**RUNWAY DECLARED DISTANCE INFORMATION**

**RWY 15:** TORA-6316 TODA-6316 ASDA-5221 LDA-5221

**SERVICE:** S4 FUEL 100LL, JET A, A+ OX 1, 2, 3, 4 LGT When ATCT clsd actvt MIRL Rwy 02-20, 15-33—CTAF; MIRL Rwy 02-20 preset low intst; incr intst—CTAF. Rwy 02-20 Intens rwy lgts: Midfield lgt colored.

**MILITARY— FUEL A+** (avl 1300-0500Z±, C505-471-2525; OT call 1 hr PN rqr and \$50/hr fee.) (NC-100LL, A1, A1+) **FLUID** LHOXRB, SP

**NOISE:** Noise abatement proc-AMGR.

**AIRPORT REMARKS:** Attended 1300-0500Z±. Aft hr svc—505-577-7256 or 505-471-2255. Class I, ARFF Index A. 24 hr PPR for acr ops with more than 30 pax seats—505-955-2900. ARFF Index B avbl on req. Rotary wing TPA—7000 (652). RNG on fld.

**AIRPORT MANAGER:** 505-955-2900

**WEATHER DATA SOURCES:** ASOS (505) 474-3117

**COMMUNICATIONS:** CTAF 119.5 ATIS 128.55 UNICOM 122.95

RCO 122.2 (ALBUQUERQUE RADIO)

Ⓡ **ALBUQUERQUE CENTER APP/DEP CON** 132.8

TOWER 119.5 (1400-0400Z±) **GND CON** 121.7

**CLEARANCE DELIVERY PHONE:** For CD if una to ctc on FSS freq, ctc Albuquerque ARTCC at 505-856-4561.

**AIRSPACE:** CLASS D svc 1400-0400Z±; other times CLASS G.

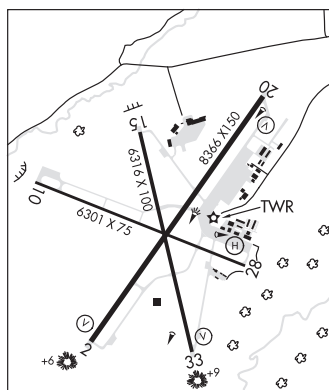
**RADIO AIDS TO NAVIGATION:** NOTAM FILE SAF.

(L) (L) **VORTAC** 110.6 SAF Chan 43 N35°32.43' W106°03.90' 332° 4.7 NM to fld. 6268/13E.

VORTAC unusable:

015°-030° byd 30 NM blo 14,600'

ILS/DME 111.7 I-SGB Chan 54 Rwy 02. Class IE. Unmonitored when ATCT closed.



**SANTA ROSA ROUTE 66** (SXU)(KXSU) 3 E UTC-7(-6DT) N34°56.14' W104°38.55'

**ALBUQUERQUE**

4791 B NOTAM FILE ABQ

H-6F, L-15A

**RWY 01-19:** H5013X75 (ASPH) S-12.5 PCN 5 F/D/Y/T MIRL

**RWY 19:** PAPI(P2L)—GA 2.45° TCH 41'.

**RWY 08-26:** H4294X60 (ASPH) S-11.5 PCN 5 F/C/Y/T MIRL 0.4% up E

**RWY 26:** PAPI(P2L)—GA 3.36° TCH 27'.

**SERVICE:** FUEL 100LL, JET A LGT ACTVT MIRL Rwy 01-19 and Rwy 08-26 preset med ints dusk-0500Z±; incr intst —CTAF. After 0500Z± ACTVT—CTAF.

**AIRPORT REMARKS:** Unattended. 100LL avbl H24 with credit card. Wildlife on and invof arpt. Rwy 01-19 +5 ft berm W of centerline near Rwy 19 touchdown bars. Gate access code—9942.

**AIRPORT MANAGER:** 575-799-2296

**WEATHER DATA SOURCES:** AWOS-3 118.1 (575) 472-9943.

**COMMUNICATIONS:** CTAF/UNICOM 122.8

**CLEARANCE DELIVERY PHONE:** For CD ctc Albuquerque ARTCC at 505-856-4861.

**RADIO AIDS TO NAVIGATION:** NOTAM FILE ABQ.

**ANTON CHICO (VH) (H) VORTAC** 117.8 ACH Chan 125 N35°06.70' W105°02.40' 106° 22.2 NM to fld.

5450/12E.