

**WILLIAMS**

**H A CLARK MEML FLD** (CMR)(KCMR) 3 N UTC-7 N35°18.33' W112°11.66'

**PHOENIX**  
H-4J, L-8F  
IAP

6691 B NOTAM FILE PRC

**RWY 18-36:** H6003X100 (ASPH) MIRL 1.0% up S

**RWY 18:** REIL. PAPI(P2L)—GA 3.0° TCH 46'. Tree.

**RWY 36:** REIL. PAPI(P2L)—GA 3.0° TCH 50'.

**SERVICE:** S4 **FUEL** 100LL, JET A1+ **LGT** ACTVT REIL Rwy 18 and Rwy 36; PAPI Rwy 18 and Rwy 36; MIRL Rwy 18-36—CTAF.

**AIRPORT REMARKS:** Attended Wed-Sun 1500-2200Z. 100LL fuel self svc with credit card H24. A1+ fuel full svc avbl by appt-amgr or 928-300-8385. Winter FICON—amgr. Rwy 18-36 has 10-15 ft trees and brush 120 ft W of cntrln full len. Rwy 18 has 393 ft hill 7800 ft fm rwy end on cntrln. Rwy 36 has 479 ft hill 8800 ft fm rwy end on cntrln.

**AIRPORT MANAGER:** 928-635-8982

**WEATHER DATA SOURCES:** AWOS-3 121.125 (928) 635-1278.

**COMMUNICATIONS:** CTAF/UNICOM 122.8

Ⓡ **ALBUQUERQUE CENTER APP/DEP CON** 128.45

**CLEARANCE DELIVERY PHONE:** For CD ctc Albuquerque ARTCC at 505-856-4861.

**RADIO AIDS TO NAVIGATION:** NOTAM FILE FLG.

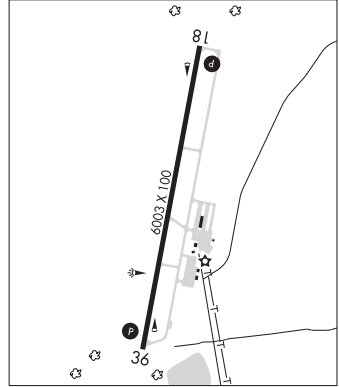
**FLAGSTAFF (VH) (DH) VOR/DME** 113.85 FLG Chan 85(Y)  
N35°08.83' W111°40.45' 276° 27.3 NM to fld.  
7026/14E.

VOR unusable:

- 030°-040° byd 40 NM
- 041°-051° byd 40 NM blo 18,000'
- 052°-061° byd 40 NM
- 062°-072° byd 40 NM blo 18,000'
- 073°-140° byd 40 NM
- 141°-151° byd 40 NM blo 18,000'
- 152°-159° byd 40 NM
- 160°-177° byd 40 NM blo 11,000'
- 160°-177° byd 48 NM blo 12,000'
- 160°-177° byd 63 NM
- 178°-231° byd 40 NM
- 232°-252° byd 40 NM blo 18,000'
- 253°-295° byd 40 NM
- 335°-030° byd 19 NM blo 24,000'
- 350°-026° byd 40 NM

DME unusable:

- 230°-255° byd 20 NM blo 15,000'



**WILLIE** N33°18.19' W111°39.09' NOTAM FILE IWA.

**PHOENIX**  
H-4J, L-5B

**(L) (L) VORTACW** 113.3 IWA Chan 80 at Phoenix-Mesa Gateway. 1367/13E.

VOR unusable:

- 300°-320° byd 25 NM blo 7,500'
- 320°-300° byd 20 NM blo 7,500'

TACAN AZIMUTH unusable:

- 020°-055° byd 30 NM blo 12,000'
- 150°-195° byd 20 NM blo 7,500'

DME unusable:

- 020°-055° byd 30 NM blo 12,000'
- 150°-195° byd 20 NM blo 7,500'