

**COVINGTON**

**CINCINNATI/NORTHERN KENTUCKY INTL** (CVG)(KCVG) 8 SW UTC-5(-4DT) N39°02.93'

**CINCINNATI**  
H-10G, L-26F, 27E  
IAP, AD

W84°40.07'

896 B LRA ARFF Index—See Remarks NOTAM FILE CVG

**RWY 09-27:** H12001X150 (ASPH-CONC-GRVD) S-120, D-250, 2S-175, 2D-550, 2D/2D2-875 PCN 101R/B/W/T HIRL CL  
**RWY 09:** MALSR. TDZL. PAPI(P4L)—GA 3.0° TCH 70'. RVR-TR 0.3% down.

**RWY 27:** MALSR. PAPI(P4L)—GA 3.0° TCH 67'. RVR-TR

**RWY 18C-36C:** H11000X150 (ASPH-CONC-GRVD) S-120, D-250, 2S-175, 2D-550, 2D/2D2-875 PCN 112F/C/W/T HIRL CL

**RWY 18C:** MALSR. TDZL. PAPI(P4R)—GA 3.0° TCH 71'. RVR-TMR

**RWY 36C:** ALSF2. TDZL. PAPI(P4L)—GA 3.0° TCH 77'. RVR-TMR 0.6% up.

**RWY 18L-36R:** H10000X150 (CONC-GRVD) S-120, D-250, 2S-175, 2D-550, 2D/2D2-875 PCN 127R/B/W/T HIRL CL

**RWY 18L:** MALSR. TDZL. PAPI(P4L)—GA 3.0° TCH 71'. RVR-TMR

**RWY 36R:** ALSF2. TDZL. PAPI(P4R)—GA 3.0° TCH 70'. RVR-TMR

**RWY 18R-36L:** H8000X150 (CONC-GRVD) S-120, D-250, 2D-550, 2D/2D2-875 PCN 170R/B/W/T HIRL CL

**RWY 18R:** ALSF2. TDZL. RVR-TMR

**RWY 36L:** ALSF2. TDZL. RVR-TMR

**RUNWAY DECLARED DISTANCE INFORMATION**

**RWY 09:** TORA-12000 TODA-12000 ASDA-11640 LDA-11640

**RWY 27:** TORA-12000 TODA-12000 ASDA-12000 LDA-12000

**SERVICE:** S4 FUEL 100LL, JET A

**NOISE:** Noise sens area N & S of arpt; rwy asgn 0300-1200Z† based on noise abatement. Successive or simul dep fm Rwy 18L, 18C, 36L, 36C & 36R apvd with course dvrg bgn no further than 2 mi fm EOR due to noise abatement. NOTE: See Special Notices—NOISE ABATEMENT PROCEDURES Covington, KY, Cincinnati/Northern Kentucky Intl Airport (CVG).

**AIRPORT REMARKS:** Attended continuously. Birds on and invof the arpt. Opr Parrot with alt reporting mode and ADS-B enabled on arpt sfcs. Twys rstrd to 15 mph or less with wingspan 214' or more. Rwy 09-27 W 4200' and E 750' conc; remainder asph overlay. Flight Notification Service (ADCUS) avbl. Class I, ARFF Index C. ARFF Index D/E avbl upon req. Rwy 18R-36L clsd to air carrier acft wigsan more than 140 ft.

**AIRPORT MANAGER:** 859-767-3151

**WEATHER DATA SOURCES:** ASOS 134.375 (859) 767-8210. TDWR.

**COMMUNICATIONS:** D-ATIS ARR 134.375 D-ATIS DEP 135.3 UNICOM 122.95

Ⓡ APP CON 119.7 (090°-269°) 123.875 (270°-089°)

**TOWER** 118.3 (Rwy 09-27 and Rwy 18C-36C) 118.975 (Rwy 18L-36R) 133.325 (Rwy 18R-36L)

**GND CON** 121.7 **CLNC DEL** 127.175

Ⓡ DEP CON 128.7 (181°-360°) 126.65 (001°-180°)

**RAMP CTL** 130.90 (Ramp 1N / 1S Txl & Ramp 2N / 2S Txl) 130.375 (Ramp 3 Txl & N Txl) 129.475 (DHL Ramp)

130.5 (AMZ Ramp Ctl)

**CPDLC** (LOGON KUSA)

**PDC**

**AIRSPACE:** CLASS B See VFR Terminal Area Chart.

**RADIO AIDS TO NAVIGATION:** NOTAM FILE CVG.

(L) (L) **VORTACW** 117.3 CVG Chan 120 N39°00.96' W84°42.20' 044° 2.6 NM to fld. 878/4W.

**ILS/DME** 111.9 I-URN Chan 56 Rwy 09. Class ID.

**ILS/DME** 111.55 I-SIC Chan 52(Y) Rwy 18C. Class IIE.

**ILS/DME** 110.15 I-CJZ Chan 38(Y) Rwy 18L. Class IA. LOC unusable byd 25° left of course.

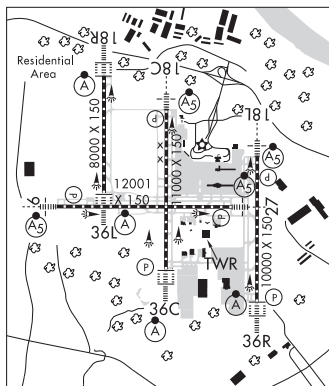
**ILS/DME** 110.75 I-CJN Chan 44(Y) Rwy 18R. Class IIE.

**ILS** 108.7 I-JDP Rwy 27. Class IIE. LOC unusable byd 20° right of course.

**ILS/DME** 109.9 I-CVG Chan 36 Rwy 36C. Class IIIE.

**ILS/DME** 110.75 I-VAC Chan 44(Y) Rwy 36L. Class IIE.

**ILS/DME** 110.35 I-EEI Chan 40(Y) Rwy 36R. Class IIIE.



**CUMBERLAND RIVER** N36°59.78' W84°40.87' NOTAM FILE LOU.

**NDB (MHW)** 388 CDX 048° 4.7 NM to Lake Cumberland Rgnl. 958/5W. NDB unmonitored.

**CINCINNATI**  
L-26F