

FORT WORTH MEACHAM INTL (FTW)(KFTW) 5 N UTC-6(-5DT) N32°49.19' W97°21.75'

DALLAS-FT WORTH

710 B TPA—See Remarks ARFF Index—See Remarks NOTAM FILE FTW

COPTER

RWY 16-34: H7502X150 (CONC-GRVD) S-80, D-100, 2S-127,

H-6H, L-17C, A

2D-190, 2D/2D2-350 PCN 30 R/C/W/U HIRL 0.5% up N

IAP, AD

RWY 16: MALSR. PAPI(P4R)—GA 3.0° TCH 59'. RVR-T Pole.

RWY 34: MALSR. RVR-R Rgt tfc.

RWY 17-35: H4005X75 (ASPH) S-12.5, D-50 PCN 11 F/C/X/U MIRL

RWY 17: PAPI(P2L)—GA 3.75° TCH 56'. Berm. Rgt tfc.

RWY 35: PAPI(P2L)—GA 3.25° TCH 43'.

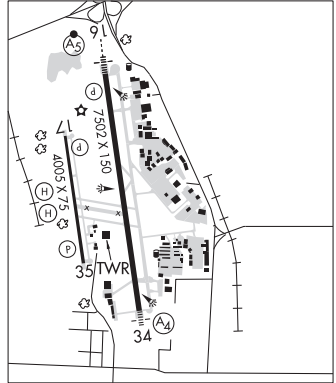
RUNWAY DECLARED DISTANCE INFORMATION

RWY 16: TORA-7502 TODA-7502 ASDA-7502 LDA-7502

RWY 34: TORA-7502 TODA-7502 ASDA-7455 LDA-7455

SERVICE: S4 **FUEL** 100LL, JET A, A1+ **OX** 1, 3 **LGT** Rwy 17-35 LED
lgt can appr brgr than Rwy 16-34; ensure cor rwy alnmt.

AIRPORT REMARKS: Attended continuously. Birds on and invof arpt. Rwy 09-27 CLOSED indef. Class IV, ARFF Index A. ARFF Index A or higher available all users with PPR. ARFF Index B avbl all users with PPR. Helo skidding opns prohibited on Rwy 17-35. If skidding is rqrd, coord with ATCT to use Twy B. Rwy 17-35 Twys B, B1, C and D west of Rwy 16-34, Twy M east of Twy A, H, J, Txl G SE of Txl N clsd to acct with more than 30 psgr seats. Rwy 17-35 designed for acct with wingspan of 49 ft or less. Twys B and B1 designed for acct with wingspan less than 79 ft. Rwy 16-34 and Twys A, A1, and M designed for acct with wingspan less than 171 ft. All other Twys designed for acct with wingspan of less than 118 ft. Mkd US CUST pkrg southeast of Txl G and Txl N intrn. PPR for acr opns with more than 30 psgr seats-24 hr notice rqrd-call Arpt Ops 817-994-0653. TPA—Rwy 17-35 R/W 1300(590) AGL, F/W 1500(790) AGL, Rwy 16-34 1500(790) AGL, Jets 2000(1290) AGL. Arpt fees for use of cust svcs will be could imt upon ldg by city of Fort Worth Arpt opns psnl. User fee arpt. NOTE: See Special Notices—Arrival Alert.



AIRPORT MANAGER: 817 392-5400

WEATHER DATA SOURCES: ASOS (817) 740-3346

COMMUNICATIONS: ATIS 120.7

RCO 122.6 (FORT WORTH RADIO)

RGNL APP/DEP CON 118.1 124.3 125.2 125.8 125.9 135.975 (North) 118.1 125.8 135.975 (South) 124.3 125.2 125.8

MEACHAM TOWER 118.3 **GND CON** 121.9 **CLNC DEL** 124.65

AIRSPACE: CLASS D.

VOR TEST FACILITY (VOT) 108.2

RADIO AIDS TO NAVIGATION: NOTAM FILE FTW.

RANGER (VH) (H) VORTACW 115.7 **FUZ** Chan 104 N32°53.37' W97°10.77' 240° 10.1 NM to fld. 639/6E.

VOR unusable:

275°-290° byd 40 NM

317°-327° byd 40 NM

MUFIN NDB (LOMW) 365 FT N32°53.59' W97°22.40' 165° 4.4 NM to fld. 744/8E.

ILS/DME 109.9 I-FTW Chan 36 Rwy 16. Class IT. LOM MUFIN NDB, DME also serves Rwy 34.

ILS/DME 109.9 I-UXT Chan 36 Rwy 34. Class IB. DME also serves Rwy 16.

HELIPAD H1: H35X35 (CONC)

HELIPAD H2: H35X35 (CONC)

HELIPORT REMARKS: H1 and H2 helipads are VMC dalgt use only; non-movement area. Hcls repositioning byd imt prkg apron and under their own pwr must ctc ATC.