

**TALLULAH**

**VICKSBURG TALLULAH RGNL** (TVR)(KTVR) 9 E UTC-6(-5DT) N32°21.10' W91°01.66'

**MEMPHIS**  
H-6J, L-18F  
IAF

86 B TPA—1086(1000) NOTAM FILE TVR

**RWY 18-36:** H5002X100 (ASPH) S-60, D-75 MIRL

**RWY 18:** REIL. PAPI(P4L)—GA 3.0° TCH 50'. Trees.

**RWY 36:** SSALR. PAPI(P4L)—GA 3.0° TCH 50'. Trees.

**RUNWAY DECLARED DISTANCE INFORMATION**

**RWY 18:** TORA-5002 TODA-5002 ASDA-5002 LDA-5002

**RWY 36:** TORA-5002 TODA-5002 ASDA-5002 LDA-5002

**SERVICE:** S4 FUEL 100LL, JET A LGT MIRL Rwy 18-36, REIL Rwy

18, SSALR Rwy 36 preset low ints dusk-dawn, to increase ints

ACTIVATE—CTAF.

**AIRPORT REMARKS:** Attended 1300-0100Z±. Holidays 1500-2000Z±. For

arpt mgr aft hrs call 318-366-1615. PAEW on arpt. Migratory birds

invol arpt. Crop dusting activity 2 NM radius of arpt. Pilots in tfc

pattern are requested to avoid over flight of Mound, LA 1/2 mile south

and east of Rwy 36.

**AIRPORT MANAGER:** 318-574-5841

**WEATHER DATA SOURCES:** ASOS 118.525 (318) 574-4866.

**COMMUNICATIONS:** CTAF/UNICOM 123.0

MEMPHIS CENTER APP/DEP CON 132.5

**CLEARANCE DELIVERY PHONE:** For CD ctc Memphis ARTCC at

901-368-8453/8449.

**RADIO AIDS TO NAVIGATION:** NOTAM FILE GWO.

**MAGNOLIA (VH) (H) VORTACW** 113.2 MHz Chan 79 N32°26.04' W90°05.99' 265° 47.4 NM to fld. 407/1W.

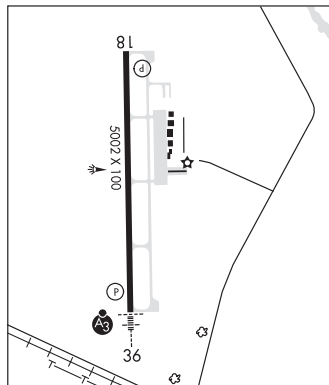
TACAN AZIMUTH unusable:

240°-275° byd 30 NM blo 2,000'

DME unsbl 240-275 byd 30 NM blo 2000'

**TALLULAH NDB (MHW/LOM)** 344 TKH N32°14.72' W91°01.55' 357° 6.4 NM to fld. 79/2E. NOTAM FILE DRI.

ILS 109.7 I-TVR Rwy 36. Class ID.



**TEOCK** N33°35.52' W90°05.06' NOTAM FILE GWO.

**MEMPHIS**  
L-18G

**NDB (LOMW)** 349 GW 182° 5.9 NM to Greenwood-Leflore. 140/1W.

**THIGPEN FLD** (See BAY SPRINGS on page 132)

**TISHOMINGO CO** (See BELMONT on page 134)

**TRENT LOTT INTL** (See PASCAGOULA on page 164)

**TUNICA**

**RALPH M SHARPE** (3ØM) 2 S UTC-6(-5DT) N34°39.55' W90°22.57'

**MEMPHIS**

195 NOTAM FILE GWO

**RWY 01-19:** H2508X14 (ASPH)

**RWY 01:** Thld displcd 108'.

**AIRPORT REMARKS:** Attended Mar-Oct dalgst hrs, Nov-Feb Mon-Fri irregularly, call manager. Rwy 01-19 80' trees E side S of

rwy violate 7:1 trsn slp. Call ahead to reserve hangar transient storage. Rwy 01 is 14 ft wid by 1800 ft long; Rwy 19 is

18 ft wid by 708 ft long.

**AIRPORT MANAGER:** 662-363-1461

**COMMUNICATIONS:** CTAF/UNICOM 122.8

**CLEARANCE DELIVERY PHONE:** For CD ctc Memphis ApcH at 901-842-8457.