

BOULDER (3U9) 2 S UTC-7(-6DT) N46°12.70' W112°06.46'

GREAT FALLS

4968 NOTAM FILE GTF

RWY 11-29: 3675X72 (TURF) 1.6% up W

AIRPORT REMARKS: Unattended. No snow removal. Rwy 11-29 NSTD markings, thlds and edges marked with white cones. -2' drainage ditch +1' berm west side of rwy full length, 43' from Rwy 11-29 cntrln.

AIRPORT MANAGER: (406) 431-7519

COMMUNICATIONS: CTAF 122.9

CLEARANCE DELIVERY PHONE: For CD ctc Helena Apch at 406-449-5756/5761, when Apch clsd ctc Salt Lake ARTCC at 801-320-2568.

BOWMAN FLD (See ANACONDA on page 90)

BOZEMAN YELLOWSTONE INTL (BZN)(KBZN) 7 NW UTC-7(-6DT) N45°46.63' W111°09.02'

GREAT FALLS

4473 B Class I, ARFF Index C NOTAM FILE BZN MON Airport

H-1E, L-13C
IAP, AD

RWY 12-30: H8994X150 (ASPH-GRVD) S-120, D-250, D-550, 2D/2D2-1120 PCN 123F/A/X/T HIRL

RWY 12: MALSR. PAPI(P4L)—GA 3.0° TCH 53'. 0.5% up.

RWY 30: REIL. PAPI(P4L)—GA 3.0° TCH 45'. 0.3% down.

RWY 11-29: H5050X75 (ASPH-GRVD) S-12.5 PCN 61 F/A/X/U

MIRL 0.4% up E

RWY 11: PAPI(P4L)—GA 3.0° TCH 42'.

RWY 29: PAPI(P4L)—GA 3.0° TCH 47'.

RWY 11G-29G: 2802X80 (TURF) 0.3% up E

RWY 03-21: H2650X75 (ASPH-GRVD) S-12.5 PCN 90 F/A/X/T 0.7% up SW

LAND AND HOLD-SHORT OPERATIONS

LDG RWY	HOLD-SHORT POINT	AVBL LDG DIST
RWY 12	03-21	6841

RUNWAY DECLARED DISTANCE INFORMATION

RWY 03:	TORA-2650	TODA-2650	ASDA-2650	LDA-2650
RWY 11:	TORA-5050	TODA-5050	ASDA-5050	LDA-5050
RWY 12:	TORA-8994	TODA-8994	ASDA-8994	LDA-8994
RWY 21:	TORA-2650	TODA-2650	ASDA-2650	LDA-2650
RWY 29:	TORA-5050	TODA-5050	ASDA-5050	LDA-5050
RWY 30:	TORA-8994	TODA-8994	ASDA-8994	LDA-8994

SERVICE: S4 FUEL 100, 100LL, JET A OX 1, 2, 3, 4 LGT When ATCT clsd ACTVT MALSR Rwy 12; REIL Rwy 30; HIRL Rwy 12-30; MIRL Rwy 11-29—CTAF. PAPI Rwy 12 and 30 opr consly.

AIRPORT REMARKS: Attended 1130-0800Z†. Migratory birds invof arpt. Glider ops on and invof arpt. Hvy student trng actvy wi 15 mis of AP. Rwy 12 is normally used for arrivals/departures when the wind speed is less than 10 knots. If aircraft is unable to use Rwy 12, other rwys may be used but delays may occur. Ldg area 11G-29G turf located 240' south of Rwy 11-29. Avbl when dry with ATC apvl. Marked with white cones. Rwy 21 btn Rwy 12-30 and Twy A avbl for acft greater than 12,500 lbs day/VFR only. Snow removal eqpt monitors CTAF. Tkf Rwy 03 prohibited until after confirming no ttc using Rwy 12. Cold temperature airport. Altitude correction required at or below -31C. User fee arpt: U.S. Customs avbl 1600-2400Z† Thu-Mon. Ldg fee for acft over 8,500 lbs.

AIRPORT MANAGER: 406-388-6632

WEATHER DATA SOURCES: ASOS (406) 388-4882

COMMUNICATIONS: CTAF 118.2 ATIS 135.425 (406-388-4767) UNICOM 122.95

RCO 122.5 (GREAT FALLS RADIO)

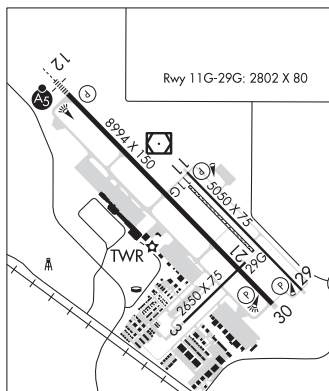
Ⓡ BIG SKY APP/DEP CON 118.975 226.675 (1300-0715Z)†

Ⓡ SALT LAKE CENTER APP/DEP CON 118.975 226.675 (0715-1300Z)†

TOWER 118.2 (1300-0700Z)† GND CON 121.8

CLEARANCE DELIVERY PHONE: For CD if una to ctc on FSS freq, ctc Salt Lake ARTCC at 801-320-2568.

AIRSPACE: CLASS D svc 1300-0700Z†; other times CLASS E.



CONTINUED ON NEXT PAGE

CONTINUED FROM PRECEDING PAGE

RADIO AIDS TO NAVIGATION: NOTAM FILE BZN.

(VH) (DH) VOR/DME 112.4 BZN Chan 71 N45°47.03' W111°09.33' at fld. 4436/18E.

VOR unusable:

- 000°-105° byd 20 NM
- 106°-180° byd 40 NM
- 181°-191° byd 40 NM blo 15,000'
- 181°-191° byd 56 NM blo 18,000'
- 192°-253° byd 40 NM
- 254°-264° byd 40 NM blo 9,000'
- 254°-264° byd 48 NM
- 265°-279° byd 40 NM
- 295°-314° byd 40 NM
- 315°-325° byd 40 NM blo 10,000'
- 315°-325° byd 49 NM
- 326°-359° byd 40 NM

DME unusable:

350°-105° byd 20 NM

MANNI NDB (MHW/LOM) 266 BZ N45°52.32' W111°17.14' 122° 8.0 NM to fld. 4218/13E.

NDB unusable:

340°-110° byd 15 NM

ILS 109.3 I-BZN Rwy 12. Class IB. LOM MANNI NDB.

BRIDGER MUNI (6S1) 0 W UTC-7(-6DT) N45°17.50' W108°55.54'

BILLINGS

3720 B NOTAM FILE GTF

L-13D

RWY 16-34: H3400X42 (ASPH) S-4 LIRL(NSTD)

RWY 16: Thld dspld 120'. Tree.

RWY 34: PAPI(P2L)—GA 3.0°. Thld dspld 475'. Rgt tfc.

SERVICE: LGT ACTIVATE LIRL Rwy 16-34, PAPI Rwy 34—CTAF.

AIRPORT REMARKS: Unattended. Deer and waterfowl on and invof arpt. Rwy 16 thld relocated 120' for ngt ops only not marked. Rwy 34 dthr mkd by nrs; 2880 ft abvl for night ops. Rwy 16-34 NSTD LIRL. West side 57' from pavement edge, East side 47' from pavement edge. Each thld has 4 lgts total.

AIRPORT MANAGER: 406-662-3505

COMMUNICATIONS: CTAF 122.9

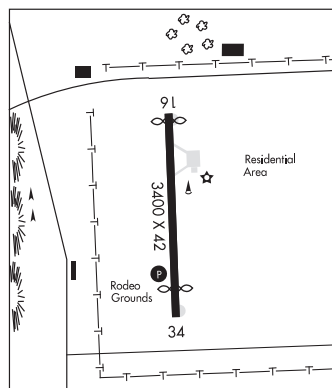
CLEARANCE DELIVERY PHONE: For CD ctc Billings Apch at 406-255-2798

RADIO AIDS TO NAVIGATION: NOTAM FILE BIL.

BILLINGS (VH) (H) VORTACW 114.5 BIL Chan 92 N45°48.51' W108°37.48' 188° 33.5 NM to fld. 3811/14E.

VOR unusable:

- 146°-154° byd 40 NM
- 155°-165° byd 40 NM blo 11,000'
- 155°-165° byd 49 NM blo 18,000'
- 166°-173° byd 40 NM



BROADUS (ØØF) 3 NW UTC-7(-6DT) N45°28.23' W105°27.43'

BILLINGS

3282 B NOTAM FILE GTF

L-13E

RWY 10-28: H4400X75 (ASPH) S-12.5 MIRL 0.4% up W

RWY 10: PAPI(P2L)—GA 3.0° TCH 25'. Rgt tfc.

RWY 28: PAPI(P2L)—GA 3.0° TCH 25'.

SERVICE: FUEL 100LL, JET A LGT MIRL Rwy 10-28, PAPI Rwy 10 and Rwy 28 opr dusk-1700, after 1700 ACTIVATE—CTAF.

AIRPORT REMARKS: Unattended.

AIRPORT MANAGER: 406-853-6448

COMMUNICATIONS: CTAF 122.9

CLEARANCE DELIVERY PHONE: For CD ctc Salt Lake ARTCC at 801-320-2568.

RADIO AIDS TO NAVIGATION: NOTAM FILE MLS.

MILES CITY (VH) (DH) VOR/DME 112.1 MLS Chan 58 N46°22.93' W105°57.21' 150° 58.5 NM to fld. 2666/9E.

