

WILLIAMSPORT RGNL (IPT)(KIPT) 4 E UTC-5(-4DT) N41°14.50' W76°55.31'

NEW YORK

528 B ARFF Index—See Remarks NOTAM FILE IPT

H-10H, 12L, L-30J

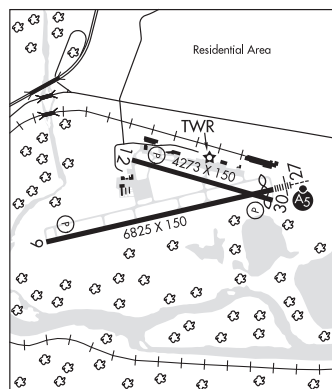
RWY 09-27: H6825X150 (ASPH-GRVD) S-65, D-100, 2S-127,

IAP, AD

2D-190 PCN 43 F/A/X/T HIRL

RWY 09: REIL. PAPI(P4L)—GA 3.0° TCH 49'. Trees.**RWY 27:** MALSR. Thld dsplcd 255'. Trees. Rgt tfc.**RWY 12-30:** H4273X150 (ASPH) S-200, D-200, 2S-175, 2D-400

PCN 46 F/A/X/T MIRL

RWY 12: PAPI(P2L)—GA 3.75° TCH 45'. Trees.**RWY 30:** PAPI(P2L)—GA 4.0° TCH 41'. Trees. Rgt tfc.**RUNWAY DECLARED DISTANCE INFORMATION****RWY 09:** TORA-6825 TODA-6825 ASDA-6073 LDA-6073**RWY 12:** TORA-4273 TODA-4273 ASDA-4273 LDA-4273**RWY 27:** TORA-6825 TODA-6825 ASDA-6318 LDA-6063**RWY 30:** TORA-4273 TODA-4273 ASDA-4273 LDA-4273

SERVICE: S4 **FUEL** 100LL, JET A **OX** 1 **LGT** When twr CLSD ACTVT MALSR Rwy 27; REIL Rwy 09; HIRL Rwy 09-27; MIRL Rwy 12-30; and twy lgts—CTAF. PAPI Rwys 09, 12 and 30 oper consly. MIRL Rwy 12-30, click three times for medium intst. Rwy 09 PAPI baffled unusbl byd 2 degs R of crs. Rwy 30 PAPI baffled unusbl byd 7 degs L of crs.

AIRPORT REMARKS: Attended 1200-0300Z†. Deer and birds on and in/ov arpt especially AER 27 and AER 30. Rwy and twy conds not mnt dly 2200-1200Z†. Fuel and svcs avbl 1200-0300Z†, after hrs by prior cdm call 570-368-2651. Twy J clsd to acct with wing span over 78'. Class I, ARFF Index A. PPR 12 hrs for unsked ACR opns with more than 30 psgr seats call amgr. Index A coverage avbl 1200-2200Z† and btn 2200-1200Z† upon req call amgr. Index B coverage avbl upon req call amgr. Unlgt'd crane 90° AGL 0.5 miles SE AER 30 permanently. For landside access from arpt after hrs use computerized gate system at east end of FBO apron. Cold temperature airport. Altitude correction required at or below -14C. Ldg fee.

AIRPORT MANAGER: 570-368-2444**WEATHER DATA SOURCES:** ASOS 125.225 (570) 368-3420.**COMMUNICATIONS:** CTAF 119.1 UNICOM 122.95

RCO 122.2 (WILLIAMSPORT RADIO)

® NEW YORK CENTER APP/DEP CON 124.9

TOWER 119.1 (1130-0330Z†) GND CON 121.9

CLEARANCE DELIVERY PHONE: For CD if una to ctc on FSS freq, ctc New York ARTCC at 631-468-1425.**AIRSPACE:** CLASS D svc 1130-0330Z†; other times CLASS E.**RADIO AIDS TO NAVIGATION:** NOTAM FILE IPT.

(L) (L) VOR/DME 114.4 FQM Chan 91 N41°20.31' W76°46.49' 238° 8.8 NM to fld. 2098/9W.

ILS/DME 110.1 I-IPT Chan 38 Rwy 27. Class IE. LOC unusable byd 028° left of course. DME unusable byd 028° left of course.

COMM/NAV/WEATHER REMARKS: When twr clsd New York Center provides Clnc Del on 124.9.**WINGS FLD** (See PHILADELPHIA on page 300)**YARDLEY** N40°15.20' W74°54.46' NOTAM FILE IPT.

NEW YORK

(L) (L) VOR/DME 108.2 ARD Chan 19 082° 4.5 NM to Trenton Mercer. 294/10W.

H-10I, L-34G, A

VOR unusable:

020°-040°

195°-225° byd 25 NM blo 5,000'

250°-265° blo 3,500'

266°-280° byd 20 NM blo 5,000'

281°-300° byd 14 NM blo 6,000'

DME unusable:

225°-275° byd 25 NM blo 5,000'