

AEROFLEX/ANDOVER (See ANDOVER on page 160)

ALEXANDRIA (See PITTSTOWN on page 175)

ANDOVER

AEROFLEX/ANDOVER (12N) 3 N UTC-5(-4DT) N41°00.52' W74°44.28'

NEW YORK
L-33A, 34H
IAP

583 B NOTAM FILE 12N

RWY 03-21: H1981X50 (ASPH) MIRL

RWY 03: Trees. Rgt tfc.

RWY 21: Tree.

SERVICE: S4 **FUEL** 100LL **LGT** Actvt MIRL **Rwy 03-21**—CTAF.

NOISE: Noise abatement procedures in effect ctc AMGR 973-786-5100.

AIRPORT REMARKS: Attended 1400-2200Z. Parallel turf rwy restricted use only. No touch and go lds. PPR required for night transients ctc AMGR 973-786-5100. Avoid overflying Lake Lenape while on downwind. Arpt rstd to apch category A acct only. **Rwy 03-21** lakes at both apch ends. Dirt svc road to trml area in front of **Rwy 03** thld.

AIRPORT MANAGER: 973-786-5100

WEATHER DATA SOURCES: ASOS (917) 786-7221

COMMUNICATIONS: CTAF/UNICOM 122.8

Ⓡ **NEW YORK APP/DEP CON** 127.6

CLEARANCE DELIVERY PHONE: For CD ctc New York Apch at 800-645-3206.

RADIO AIDS TO NAVIGATION: NOTAM FILE MIV.

STILLWATER (L) (L) VORW/DME 109.6 STW Chan 33 N40°59.75' W74°52.14' 094° 6.0 NM to fld. 920/11W.

DME unusable:

089°-099° within 12 NM blo 10,000'

210°-320° byd 30 NM blo 4,000'

ATLANTIC CITY INTL (ACY)(KACY) P (ANG) 9 NW UTC-5(-4DT) N39°27.46' W74°34.63'

WASHINGTON
H-101, 12J, L-34G
IAP, AD

75 B Class I, ARFF Index C NOTAM FILE ACY

RWY 13-31: H10000X150 (ASPH-GRVD) S-85, D-120, 2S-152,

2D-350 PCN 78 F/A/W/T HIRL CL

RWY 13: MALS. TDZL. PAPI(P4L)—GA 3.0° TCH 71'. RVR-TR Road.

RWY 31: REIL. PAPI(P4L)—GA 3.0° TCH 69'. RVR-TR Antenna.

RWY 04-22: H6144X150 (ASPH-CONC-GRVD) S-75, D-175, 2S-175,

2D-400, 2D/2D2-900 PCN 62 R/A/W/T HIRL

RWY 04: PAPI(P4L)—GA 3.0° TCH 47'. Tree.

RWY 22: VASI(V4L)—GA 3.0° TCH 51'. Trees.

LAND AND HOLD—SHORT OPERATIONS

LDG RWY	HOLD—SHORT POINT	AVBL LDG DIST
RWY 04	13-31	3550
RWY 13	04-22	3600
RWY 31	04-22	5750

RUNWAY DECLARED DISTANCE INFORMATION

RWY 04: TORA-6144 TODA-6144 ASDA-6144 LDA-6144
RWY 13: TORA-10000 TODA-10000 ASDA-10000 LDA-10000
RWY 22: TORA-6144 TODA-6144 ASDA-6144 LDA-6144
RWY 31: TORA-10000 TODA-10000 ASDA-10000 LDA-10000

ARRESTING GEAR/SYSTEM

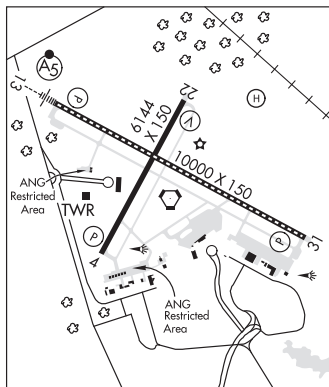
RWY 13 BAK-14 BAK-12B (B) (1600') BAK-14 BAK-12B (B) (1600')
RWY 31

SERVICE: S3 **FUEL** 100LL, JET A, A++ **OX 3** **MILITARY— A-GEAR** Avoid centerline lgt dur cable engagement to prevent tailhook bounce. **FUEL** A++ (MIL) (NC-100LL, A) **OIL** JOAP(MII) **TRAN ALERT** Ltd maint and prk.

NOISE: Noise abatement procedures in effect ctc arpt ops at 609-645-7895 extension 2002.

AIRPORT REMARKS: Attended continuously. No training flts 0400-1200Z. A-Gear **Rwy 31** located 1600' from thld, ctc twr for ops. Avoid centerline lights during cable engagement to prevent tailhook bounce. Fox and birds on and invof arpt. Twy C clsd to dual tandem and double tandem equipped acct. Experimental heliport located on N side of arpt rstd to use of FAA project acct only. ANG arm/dearm pads for military use only. High performance mil acct opr at arpt. FAA apron PPR call 609-485-6482. US Customs user fee arpt. Customs avbl Mon-Fri 1300-2200Z. Provide minimum 24 hr advance notice to arrange for Customs. All calls to Customs Mon-Fri 1300-2200Z, phone 609-484-1610. U.S. Customs fax 609-484-614. Ldg fee.

MILITARY REMARKS: ANG BASH Phase II in effect Apr thru Oct, ctc base ops on 261.0 or 140.7 for current BASH condition. PPR, ctc ANG base ops C609-761-6009, fax C609-761-6484, command post C609-761-6001. Ltd tran svc avbl 1100-2030Z Tue-Fri, clsd Sat-Mon and hol. NSTD mark on ANG ramp, blue lines delineate F-16 wing tip clnc, yellow lines at hangar doors for personnel clear zone.



CONTINUED ON NEXT PAGE

CONTINUED FROM PRECEDING PAGE

AIRPORT MANAGER: 609-645-7895

WEATHER DATA SOURCES: ASOS (609) 272-9311

COMMUNICATIONS: ATIS 125.725 (609-485-4444)

Ⓡ APP/DEP CON 134.25 (310°-129°) 124.6 (130°-309°)

TOWER 120.3 GND CON 121.9 CLNC DEL 127.85

ANG OPS 140.7

AIRSPACE: CLASS C svc ctc APP CON.

RADIO AIDS TO NAVIGATION: NOTAM FILE ACY.

(L) (L) VORTACW 117.15 ACY Chan 118(Y) N39°27.35' W74°34.58' at fld. 67/10W.

DME unusable:

290°-300° byd 10 NM blo 4,000'

VOR unusable:

301°-355° byd 35 NM blo 2,000'

TACAN AZIMUTH unusable:

290°-300° byd 10 NM blo 4,000'

ILS/DME 109.1 I-PVO Chan 28 Rwy 13. Class IT.

ILS/DME 109.1 I-ACY Chan 28 Rwy 31. Class IE.

ASR

COMM/NAV/WEATHER REMARKS: Durg ATC zero events, CTAF 120.3.

HELIPAD H1: H102X102 (ASPH)

HELIPORT REMARKS: Rwy H1 Pvt-Experimental use only. Ctc FAA Tech Center at 609-485-6675.

BELMAR/FARMINGDALE

MONMOUTH EXEC (BLM)(KBLM) 5 W UTC-5(-4DT) N40°11.21' W74°07.47'

153 B NOTAM FILE BLM

RWY 14-32: H7345X85 (ASPH) MIRL(NSTD) 0.6% up SE

RWY 14: REIL. Trees.

RWY 32: Trees.

RWY 03-21: H3508X50 (ASPH)

RWY 03: Trees.

RWY 21: Tree.

SERVICE: S2 FUEL 100LL, JET A LGT To prearrange for rwy lgts after 0400Z; call 732-751-0044. Rwy 14-32 nstd MIRLS; Rwy 32 thld lgts nstd.

AIRPORT REMARKS: Attended continuously. Deer and birds on and invof arpt. Self svc 100LL avbl 24 hrs. Jet A avbl 24 hrs. Rwy 03-21 clsd to acct over 12500 lbs. No helicopter activity northeast of Rwy 14. Helicopter instruction by pre-arrangement only 732-938-4800. All tsnt acct must go to FBO on west side of arpt. Rwy 14-32 first 575' at AER 32 85' wide; remainder Rwy 14-32 100' wide. Rwy 14-32 nstd twy separation 185'. Berm 36' high, north Rwy 14-32 65' from centerline. No touch and go ldgs Fri, Sat, Sun. Twys nstd markings, rwy hold markings on twys nstd placement. Twy lines do not ensure wingtip/rotor clnc at NW end of parallel twy. Ldg fee.

AIRPORT MANAGER: 732-751-0044

WEATHER DATA SOURCES: AWOS-3PT 121.625 (732) 938-3330.

COMMUNICATIONS: CTAF/UNICOM 123.0

Ⓡ MC GUIRE APP/DEP CON 126.475

CLNC DEL 126.15

CLEARANCE DELIVERY PHONE: For CD ctc Mc Guire Apch via freq, if una call 609-754-2767.

RADIO AIDS TO NAVIGATION: NOTAM FILE MIV.

COLTS NECK (L) (L) VORW/DME 115.4 COL Chan 101 N40°18.70' W74°09.58' 179° 7.7 NM to fld. 129/11W.

VOR portion unusable:

031°-179° byd 15 NM blo 6,000'

230°-240° byd 18 NM

241°-329° byd 15 NM blo 3,000'

351°-030° byd 30 NM blo 3,000'

Byd 30 NM blo 6,000'

DME portion unusable:

230°-240° byd 18 NM

ROBBINSVILLE (H) (H) VORTACW 113.8 RBV Chan 85 N40°12.14' W74°29.70' 103° 17.1 NM to fld. 248/10W.

TACAN AZIMUTH unusable:

105°-115° byd 30 NM

DME unusable:

075°-115° byd 25 NM

130°-160° byd 30 NM blo 4,000'

NEW YORK

H-101, 121, L-34H

IAP

