

CONTINUED FROM PRECEDING PAGE

VOR TEST FACILITY (VOT) 111.0

RADIO AIDS TO NAVIGATION: NOTAM FILE SFO.

(L) VORW/DME 115.8 SFO Chan 105 N37°37.17' W122°22.43' at fld. 7/17E.

VOR DME unusable:

025°-065° byd 30 NM blo 18,000'

035°-055° byd 12 NM blo 6,500'

150°-190° byd 25 NM blo 4,500'

190°-260° byd 10 NM blo 4,500'

260°-295° byd 35 NM blo 3,000'

295°-330° byd 20 NM blo 8,000'

ILS/DME 108.9 I-SIA Chan 26 Rwy 19L. Class IE. Ry 19L glideslope deviations are possible when critical areas are not required to be protected. Acft operating invof glideslope transmitter. Pilots should be alert for momentary localizer course excursions due to LARGE aircraft operating in vicinity of localizer antenna.

ILS/DME 109.55 I-SFO Chan 32(Y) Rwy 28L. Class IIE.

ILS/DME 111.7 I-GWQ Chan 54 Rwy 28R. Class IIIE.

LDA/DME 110.75 I-FNP Chan 44(Y) Rwy 28X.

SAN GABRIEL VALLEY (See EL MONTE on page 118)

SAN JOSE

NORMAN Y MINETA SAN JOSE INTL (SJC)(KSJC) 2 NW UTC-8(-7DT) N37°21.78' W121°55.72' **SAN FRANCISCO**

62 B TPA—See Remarks LRA Class I, ARFF Index D NOTAM FILE SJC

H-3B, L-2F, 3B, A

RWY 12L-30R: H11000X150 (CONC-GRVD) S-220, D-250, 2S-175, IAP, AD

2D-605 PCN 91 R/B/W/T HIRL CL

RWY 12L: REIL. PAPI(P4R)—GA 3.0° TCH 70'. Thld dspcd 1307'.

Pole.

RWY 30R: PAPI(P4L)—GA 3.0° TCH 69'. Thld dspcd 2537'. Tree. Rgt

tfc. 0.3% down.

RWY 12R-30L: H11000X150 (CONC-GRVD) S-220, D-250, 2S-175,

2D-605, 2D/2D2-875 PCN 67 R/C/W/T HIRL CL

RWY 12R: MALSR. PAPI(P4R)—GA 3.0° TCH 75'. RVR-R Thld dspcd

1297'. Pole. Rgt tfc.

RWY 30L: MALSR. PAPI(P4L)—GA 3.0° TCH 70'. RVR-T Thld dspcd

2537'. Fence. 0.3% down.

RUNWAY DECLARED DISTANCE INFORMATION

RWY 12L:TORA-10139 TODA-11000 ASDA-10139 LDA-8833

RWY 12R:TORA-9883 TODA-11000 ASDA-9883 LDA-8587

RWY 30L:TORA-10152 TODA-11000 ASDA-10152 LDA-7614

RWY 30R:TORA-10134 TODA-11000 ASDA-10134 LDA-7597

SERVICE: S4 FUEL 100LL, JET A OX 1, 2, 3, 4 LGT Rwy 30L PAPI

unusable byd 7° of centerline of rwy. ACTIVATE MALSR Rwy 12R,

MALSR Rwy 30L, HIRL Rwy 12L-30R, HIRL Rwy

12R-30L—Frequency 124.0 when twr clsd.

AIRPORT REMARKS: Attended continuously. Birds frequently on or in vicinity of arpt. First 400' Rwy 30R and Rwy 30L CLOSED

for tkf DC10, MD11, L1011. High intensity light activity: High intensity lights (lasers and large media screens) may be

visible to arrival and departure acft to San Jose international arpt during events at the stadium complex (37°24.15' N/

121°58.14' W, SJC VORTAC R-303/2.1 DME) Flight crews should use caution when opr in this area during stadium

events. Cockpit illumination and glare effect reducing visibility may be intensified during arrival and departure ops

especially at night. Noise abatement procedure: Rwy 12R-30L is preferred arrival rwy for jet acft and Rwy 12L-30R is

the preferred departure rwy for jet acft. All jet acft take-offs are to be initiated from end of rwy unless directed otherwise

by twr. TPA-1004(942) single-engine acft, 1504(1442) multi-engine and turbine powered acft. Unscheduled ops by

group 5 acft (B747) and larger not authorized except with prior arpt approval ctc arpt manager 408-392-3500. All

turbine engine run-ups require prior arpt approval, ctc manager on duty 408-392-3500. Curfew hours 0700-1500Z

FAR 36 Stage II, 0730-1430Z; FAR 36 Stage III acft listed on the schedule of authorized acft issued by the Director of

Aviation. Delayed scheduled flts and alternate emerg ops may be exempt from curfew hr restrictions. Prior arpt notification

is required for all late/early arrivals. Ctc manager on duty at 408-392-3500. Twy D between Twy W and Twy V ltd to acft

with a wingspan of less than 118' (B-737-900 or smaller). Twy Y will be periodically rstd to acft with a wingspan of less

than 171' (MD-11 or smaller) during B-787 and A-340 ops on Rwy 12L-30R. Twy Z will be periodically rstd to acft

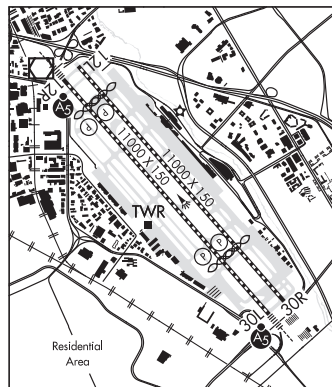
with a wingspan of less than 118' (B-737-900 or smaller) during B-787 and A-340 ops. Twy W between Twy J and

Twy L can support Group IV acft. Twy V ltd to acft with wingspan of less than 118' (B-737-900 or smaller). RRP rqrd

from FBO for transient hel ops. Rwy 12R-30L 900' dspcd thld on NW end not grvd. Rwy 30L 1873' dspcd thld on SE

end not grvd. ASSC surveillance system in use. Pilots should opr transponders with mode C on all twys and rwys. Flight

Notification Service (ADCUS) available.



CONTINUED ON NEXT PAGE

CONTINUED FROM PRECEDING PAGE

AIRPORT MANAGER: (408) 277-5100

WEATHER DATA SOURCES: ASOS (408) 969-0838 LAWRS.

COMMUNICATIONS: CTAF 124.0 UNICOM 122.95 D-ATIS 126.95 408-980-8459

Ⓡ NORCAL APP CON 120.1 121.3 124.525 125.35 126.475 133.95 134.5

TOWER 124.0 (1400-0800Z‡) GND CON 121.7 CLNC DEL 118.0 PRE TAXI CLNC 118.0

Ⓡ NORCAL DEP CON 121.3

CPDLC (LOGON KUSA)

AIRSPACE: CLASS C svc ctc APP CON svc 1400-0800Z‡ other times CLASS E.

RADIO AIDS TO NAVIGATION: NOTAM FILE SJC.

SAN JOSE (L) VORW/DME 114.1 SJC Chan 88 N37°22.48' W121°56.68' 116° 1.0 NM to fld. 35/16E.

VOR portion unusable:

140°-160° byd 25 NM blo 6,100'

170°-240° byd 30 NM blo 6,700'

360°-070° byd 25 NM blo 6,500'

ILS/DME 110.9 I-SLV Chan 46 Rwy 12R. Class IE. Unmonitored when ATCT closed.

ILS/DME 110.9 I-SJC Chan 46 Rwy 30L. Class IE. Unmonitored when ATCT closed.

COMM/NAV/WEATHER REMARKS: Emerg frequency 121.5 not avbl at tower. For Clnc Del when ATCT is clsd ctc Norcal Apch at 916-361-3748.

REID-HILLVIEW OF SANTA CLARA CO (RHV)(KRHV) 4 SE UTC-8(-7DT) N37°19.97'

SAN FRANCISCO

W121°49.19'

L-2F, 3B

135 B TPA-1135(1000) NOTAM FILE RHV

IAP, AD

RWY 13L-31R: H3100X75 (ASPH) S-17 MIRL 0.4% up SE

RWY 13L: REIL. VASI(V2L)-GA 4.0° TCH 25'. Thld dspld 499'. Tree.

RWY 31R: REIL. PAPI(P4L)-GA 4.0° TCH 45'. Thld dspld 410'. Road.

Rgt tfc.

RWY 13R-31L: H3099X75 (ASPH) S-17 0.4% up SE

RWY 13R: Thld dspld 499'. Tree. Rgt tfc.

RWY 31L: VASI(V2L)-GA 4.0° TCH 40'. Thld dspld 409'. Road.

SERVICE: S4 FUEL 100LL, JET A OX2, 4 LGT When twr clsd ACTIVATE

MIRL Rwy 13L-31R, REIL Rwy 13L and Rwy 31R-CTAF. VASI Rwy

13L, Rwy 31R and Rwy 31L opr continuously.

AIRPORT REMARKS: Attended 1500-0600Z‡. Self-fueling avbl continuously.

Birds on and in/ov arpt. Be alert all pilots-do not confuse illumination

from street lgts northeast of and parallel to RHV rwys that could be

mistaken for rwy lgts. Ensure proper activation of pilot controlled arpt

sfc lgts. Rwy 31R calm wind rwy when twr closed. No pure jet or

surplus military acft except those meeting FAR 36 noise criteria. No

touch and go landings 0500-1500Z‡. No simulated emergencies in

arpt tfc area. No turns blo 500' when leaving pattern except Rwy 31R

departures-as soon as practicable after departure make a slight right

turn to avoid school one half mile off departure end.

AIRPORT MANAGER: 408-918-7707

WEATHER DATA SOURCES: LAWRS.

COMMUNICATIONS: CTAF 119.8 ATIS 125.2 408-923-7100 UNICOM 122.95

Ⓡ NORCAL APP CON 120.1 134.5 133.95

REID-HILLVIEW TOWER 119.8 (Rwy 13L-31R) 126.1 (Rwy 13R-31L) (1500-0600Z‡) GND CON 121.65

Ⓡ NORCAL DEP CON 121.3

AIRSPACE: CLASS D svc 1500-0600Z‡ other times CLASS G.

RADIO AIDS TO NAVIGATION: NOTAM FILE SJC.

SAN JOSE (L) VORW/DME 114.1 SJC Chan 88 N37°22.48' W121°56.68' 097° 6.5 NM to fld. 35/16E.

VOR portion unusable:

140°-160° byd 25 NM blo 6,100'

170°-240° byd 30 NM blo 6,700'

360°-070° byd 25 NM blo 6,500'

COMM/NAV/WEATHER REMARKS: Emerg frequency 121.5 not avbl at tower. For Clnc Del when ATCT is clsd ctc Norcal Apch at 916-361-6874.



SAN JOSE N37°22.48' W121°56.68' NOTAM FILE SJC.

SAN FRANCISCO

(L) VORW/DME 114.1 SJC Chan 88 116° 1.0 NM to Norman Y Mineta San Jose Intl. 35/16E.

L-2F, 3B, A

VOR portion unusable:

140°-160° byd 25 NM blo 6,100'

170°-240° byd 30 NM blo 6,700'

360°-070° byd 25 NM blo 6,500'

SAN LUIS CO RGNL (See SAN LUIS OBISPO on page 207)